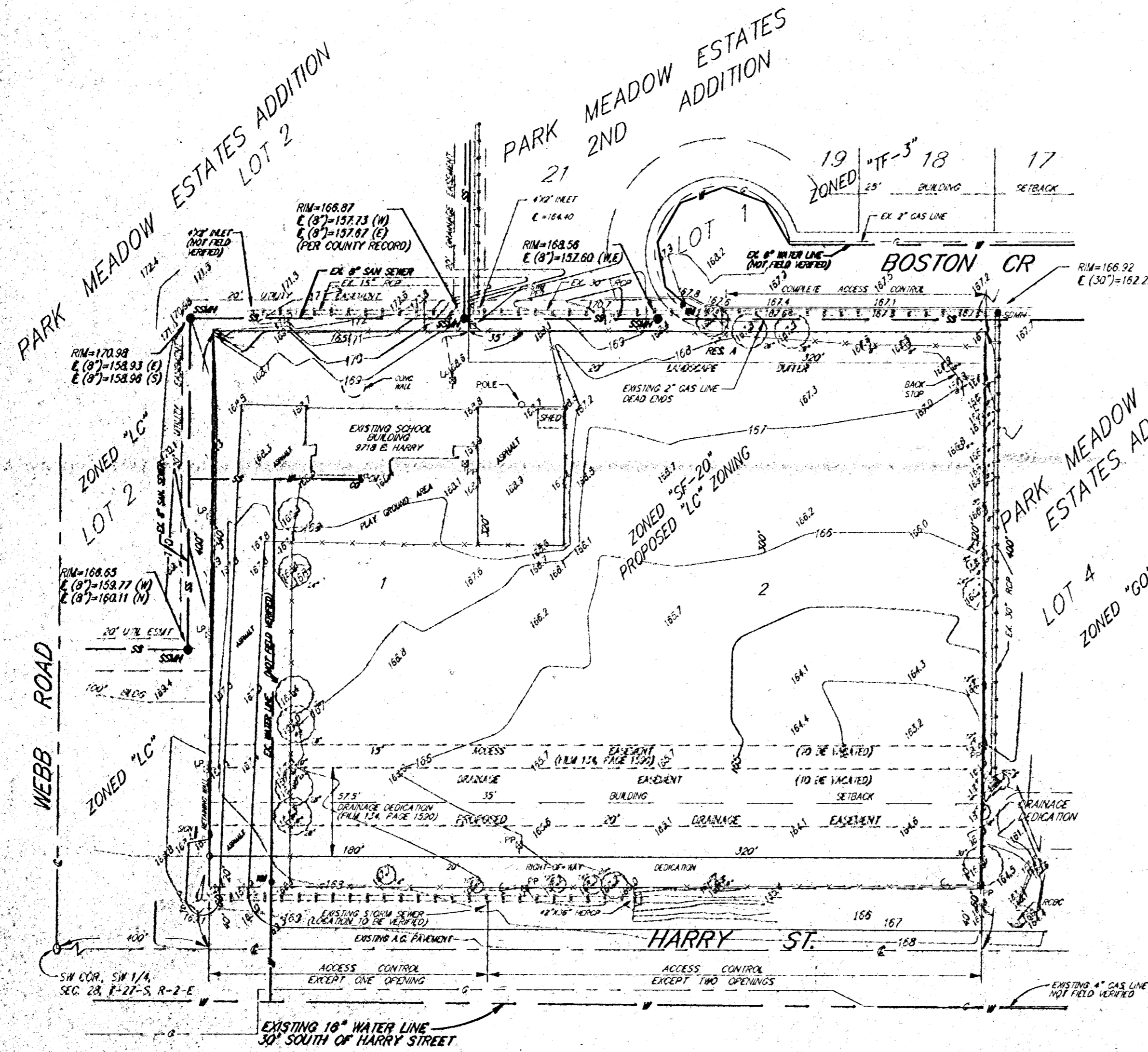


UTILITY PLAN

PARK MEADOW ESTATES THIRD ADDITION

SEDGWICK COUNTY, KANSAS



CONTRACT PURCHASER:

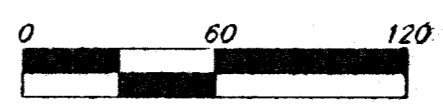
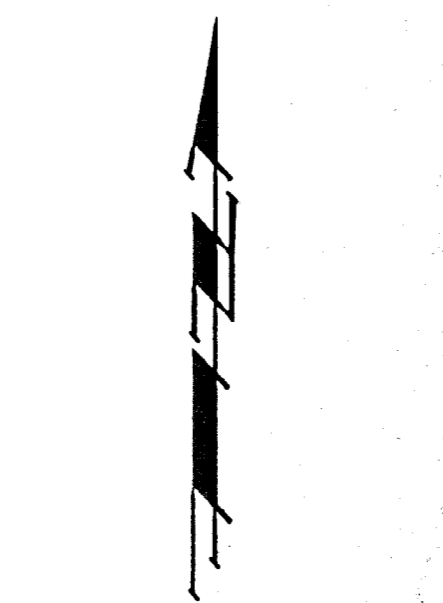
ORLIN E. ARD, JR.
P.O. BOX 8207
WICHITA, KS 67208
(316) 634-1115

LEGAL DESCRIPTION:

COMMENCING AT THE SOUTHWEST CORNER OF THE SOUTHWEST QUARTER OF SECTION 28, TOWNSHIP 27 SOUTH, RANGE 2 EAST OF THE SIXTH PRINCIPAL MERIDIAN, SEDGWICK COUNTY, KANSAS; THENCE EAST ALONG THE SOUTH LINE OF SAID SOUTHWEST QUARTER, 400 FEET FOR A POINT OF BEGINNING; THENCE NORTH PARALLEL WITH THE WEST LINE OF SAID SOUTHWEST QUARTER, 400 FEET; THENCE EAST PARALLEL WITH THE SOUTH LINE OF SAID SOUTHWEST QUARTER, 500 FEET; THENCE SOUTH PARALLEL

BENCHMARK:

WEBB ROAD AND HARRY CITY OF WICHITA BENCH MARK. NORTHWEST CORNER INTERSECTION. SE CORNER SIGNAL LIGHT POLE BASE. - 66.00' NW OF 1/2" IRON AT SECTION CORNER. - 37.50' NORTH OF "X" IN MEDIAN CURB NOSE WEST OF CENTER LINE. - 58.7' WEST OF "X" IN MEDIAN CURB NOSE NORTH OF CENTER LINE. - 42.7' SSE OF CENTER FIRE HYDRANT. ELEV. = 171.64 CITY DATUM



LEGEND:

- = #4 REBAR (SET)
- = #4 REBAR (FOUND)
- = THIMBLE (FOUND)
- SSM = SANITARY SEWER MANHOLE
- CO = CLEAN OUT
- SDM = STORM DRAIN MANHOLE
- IN = INLET
- WM = WATER METER
- GM = GAS METER
- AV = CUI AVENUE
- LP = LIGHT POLE
- PP = POWER POLE
- S = SIGN
- SB = SOUTHWESTERN BELL PEDESTAL
- T = TREE

VICINITY MAP

20 MAY 1997

BAUGHMAN COMPANY P. A.
ENGINEERING, SURVEYING, & PLANNING
310-282-7271 • 310 ELLIS • WICHITA, KANSAS 67211
Project No. 97-0118 Drawing No. 2-UTILITY