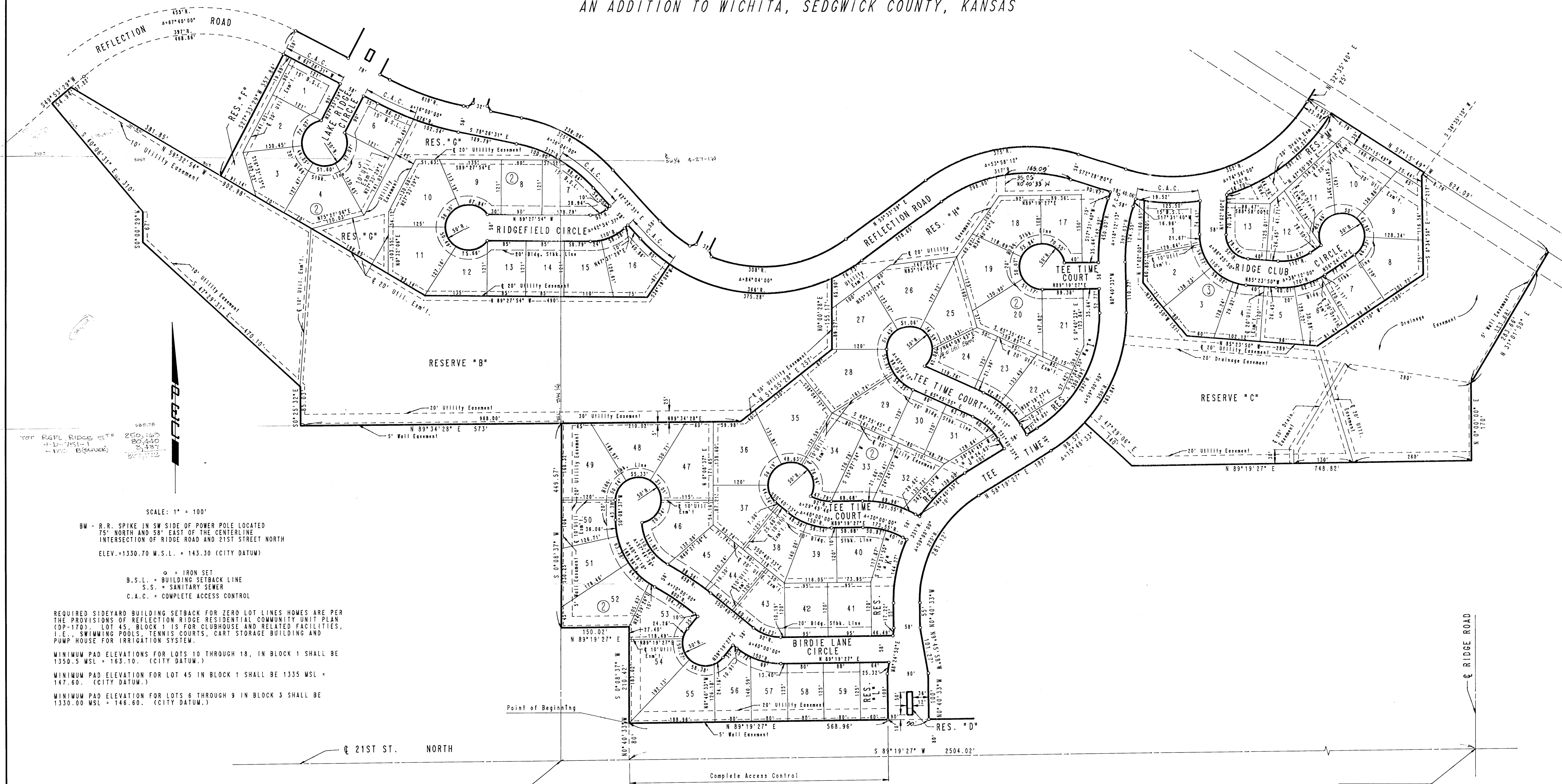


REFLECTION RIDGE

AN ADDITION TO WICHITA, SEDGWICK COUNTY, KANSAS



TOP REFL RIDGE ST
 250.160
 80.140
 2.437
 20.112

SCALE: 1" = 100'

BM - R.R. SPIKE IN SW SIDE OF POWER POLE LOCATED
 75' NORTH AND 58' EAST OF THE CENTERLINE
 INTERSECTION OF RIDGE ROAD AND 21ST STREET NORTH
 ELEV. = 1330.70 M.S.L. = 143.30 (CITY DATUM)

○ = IRON SET
 B.S.L. = BUILDING SETBACK LINE
 S.S. = SANITARY SEWER
 C.A.C. = COMPLETE ACCESS CONTROL

REQUIRED SIDEYARD BUILDING SETBACK FOR ZERO LOT LINES HOMES ARE PER
 THE PROVISIONS OF REFLECTION RIDGE RESIDENTIAL COMMUNITY UNIT PLAN
 (DP-170). LOT 45, BLOCK 1 IS FOR CLUBHOUSE AND RELATED FACILITIES,
 I.E., SWIMMING POOLS, TENNIS COURTS, CART STORAGE BUILDING AND
 PUMP HOUSE FOR IRRIGATION SYSTEM.

MINIMUM PAD ELEVATIONS FOR LOTS 10 THROUGH 18, IN BLOCK 1 SHALL BE
 1350.5 MSL = 163.10. (CITY DATUM.)

MINIMUM PAD ELEVATION FOR LOT 45 IN BLOCK 1 SHALL BE 1335 MSL =
 147.60. (CITY DATUM.)

MINIMUM PAD ELEVATION FOR LOTS 6 THROUGH 9 IN BLOCK 3 SHALL BE
 1330.00 MSL = 146.60. (CITY DATUM.)

21ST ST. NORTH

S. 1/4 Cor. Sec. 4

S.E. Cor. Sec. 4, T27S,
 R1W. of the 6th P.M.