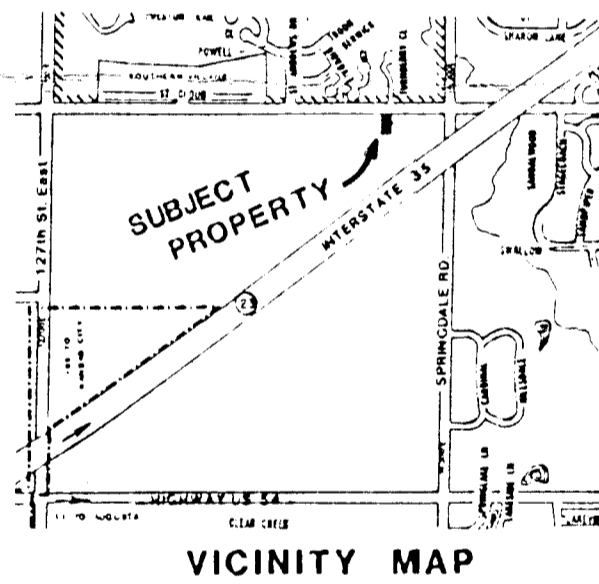


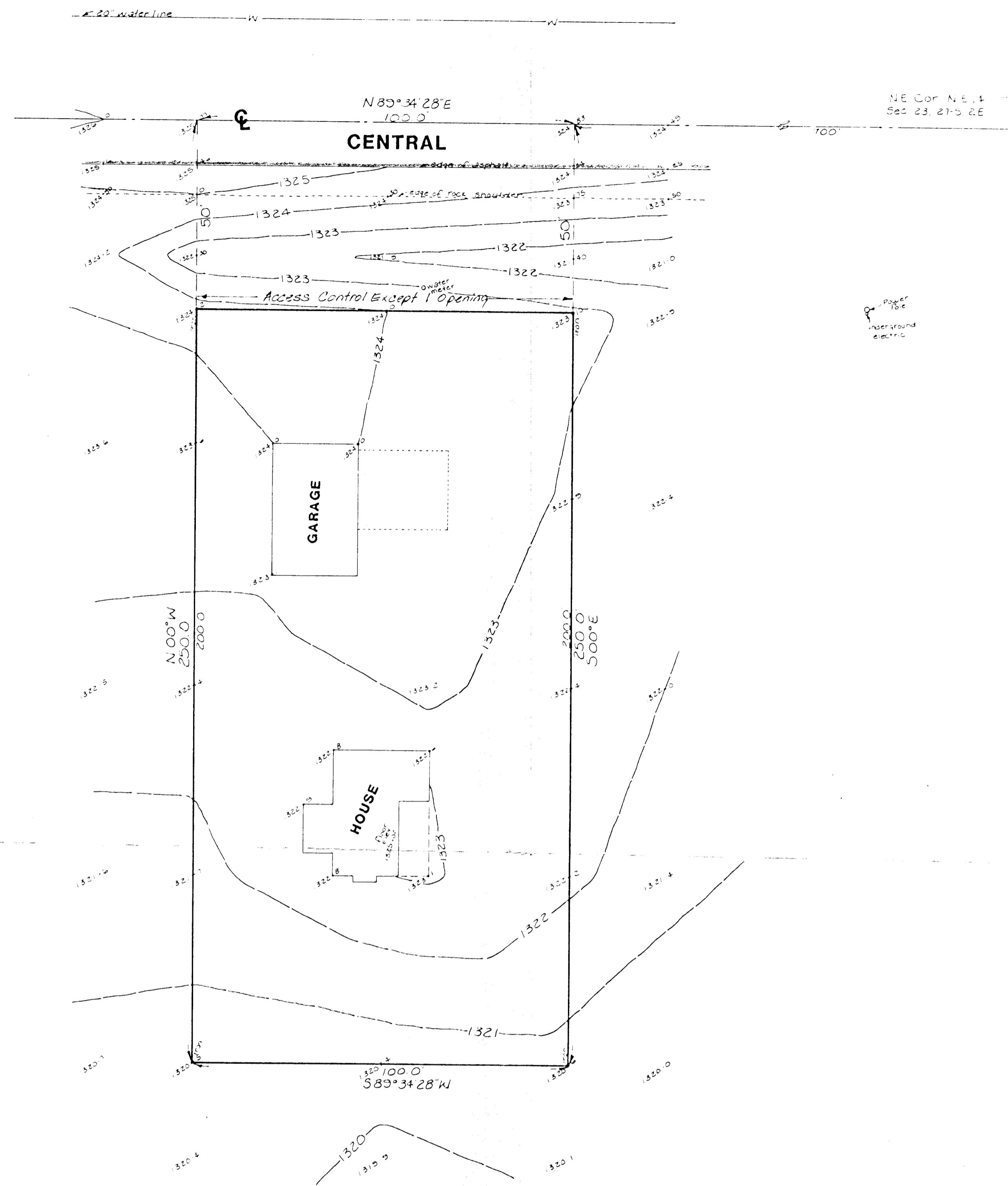


1" = 20'

Benchmark:  
D. cut top of curb  
at 10' from curb  
west of N. 1/4  
Crestview Country Club  
Estates, Overbrook, Third  
Addition to City of  
Lawrence,  
Elev. 1,364.32 M.S.L.



VICINITY MAP



SKETCH PLAT

**REBER ADDITION**

THE WEST 100 FEET OF THE EAST 800 FEET OF THE NORTH 250 FEET OF THE N.E. 1/4  
OF SEC. 23, TWP. 27-S, R-2-E, OF THE 6TH P.M., SEDGWICK COUNTY, KANSAS

OWNER: RALPH REBER