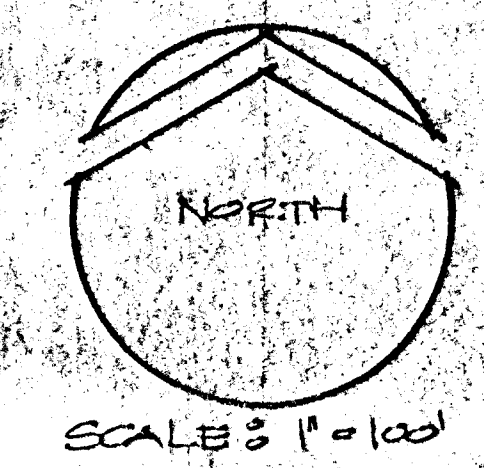
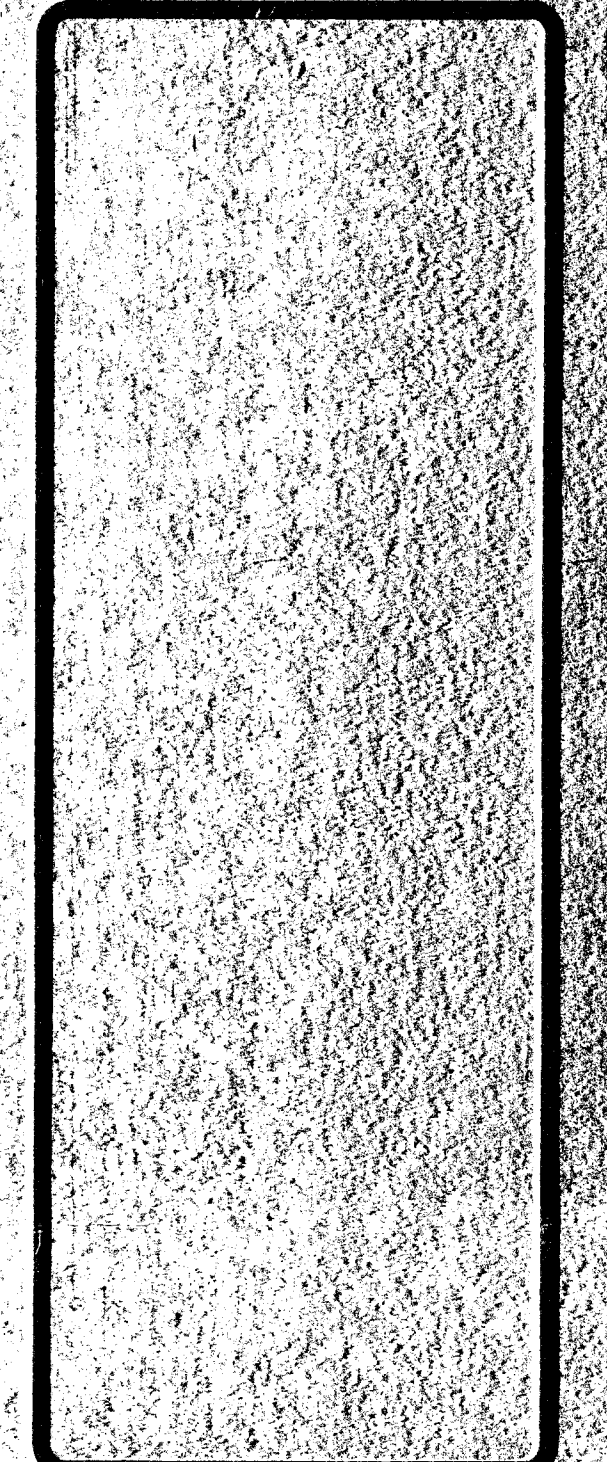
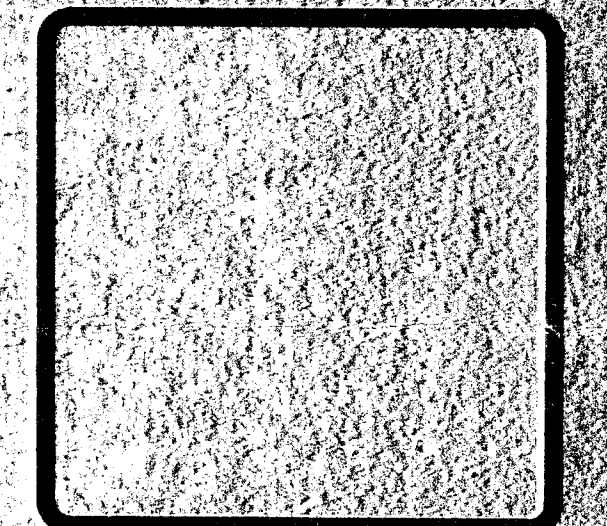




prints issued  
 2/14/00  
 revisions  
 date drawn  
 1/14/00



201-1-004 (revised) Wichita, Kansas 67211  
 (316) 267-8233



SCALE 1" = 100'

AMENDED  
**RIDGE PLAZA**  
 COMMUNITY UNIT PLAN  
 WICHITA, SEDGWICK COUNTY, KANSAS

NOTES:  
 ■■■■■■ INDICATES TEN (10)  
 FOOT PLANTING STRIP  
 ..... INDICATES 5'-0" HIGH  
 WALL

sheet title  
 RIDGE PLAZA  
 COMMUNITY  
 UNIT PLAN

sheet  
**1**  
 of 25 sheets

(U.S. 34) · KELLOGG AVENUE

"E" Light Industrial