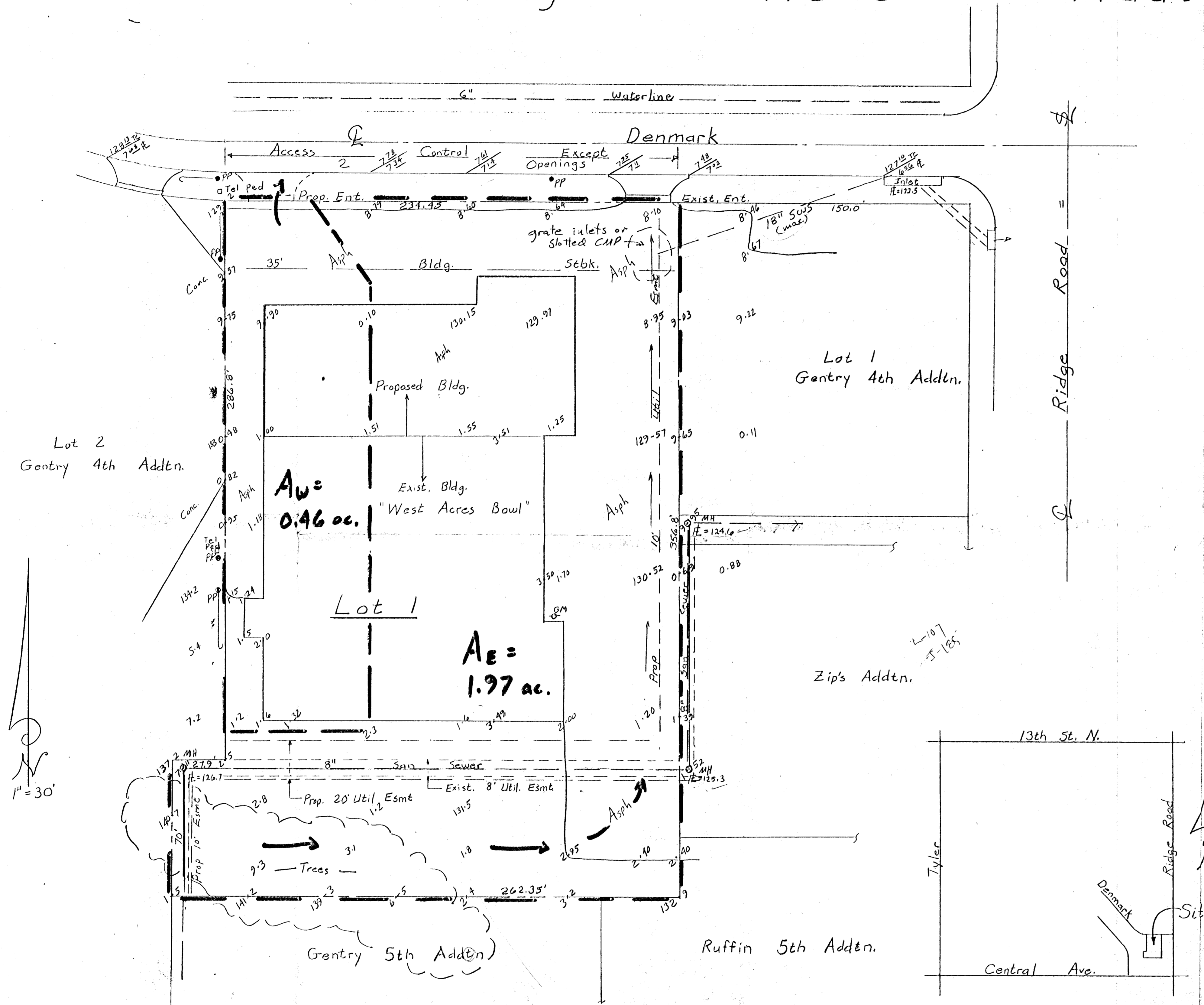


# Drainage Plan for Ridge Road Addition



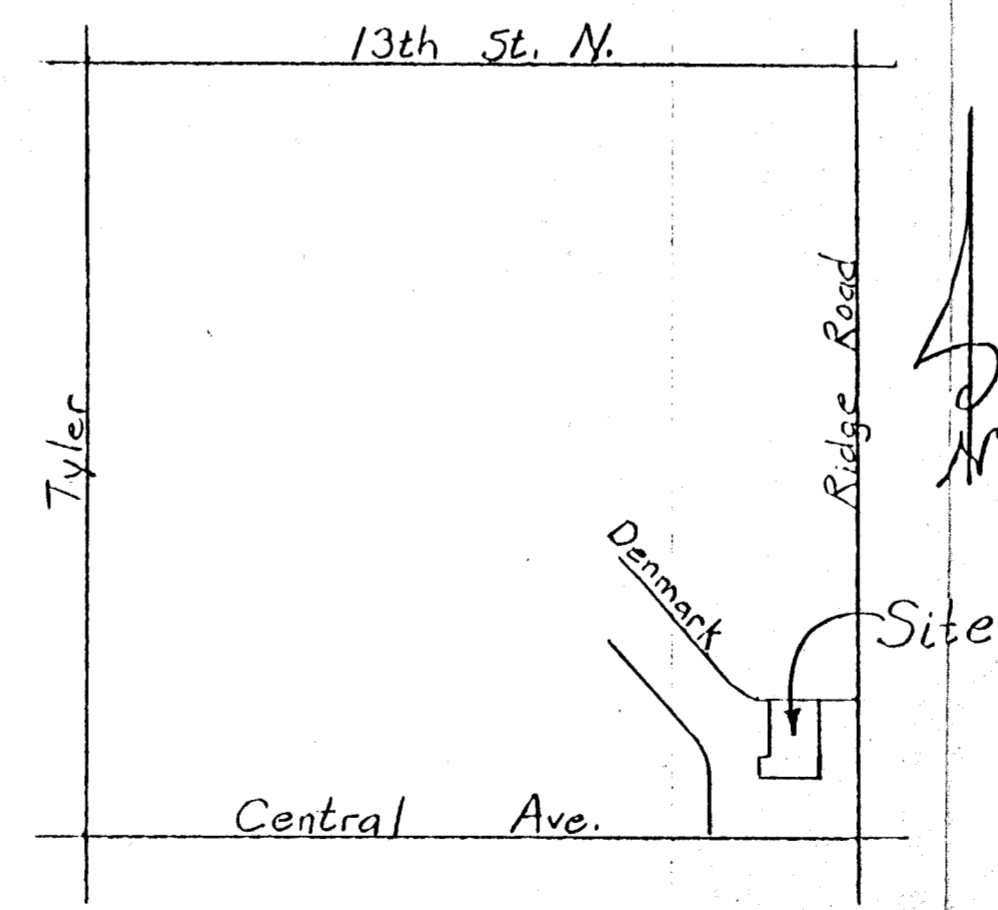
Owner: Ridge Road Bowl, Inc.  
749 North Ridge Road  
Wichita, Kansas 67212

Legal Description:  
That part of Lot 1, Block 5,  
Country Acres 2nd Addn to  
Sedgwick County, Kansas  
bounded on the north by Denmark Street;  
bounded on the east by Lot 1, Block 1,  
Gentry 4th Addn. & Zip's Addn.;  
bounded on the southeast by Ruffin  
5th Addn.;  
bounded on the south by Gentry 5th  
Addn.;  
bounded on the west by Lot 2, Block 1,  
Gentry 4th Addn.

Bench Mark:  
Chiseled "0" cut, TC, SW Corner - Curb Inlet,  
East Curb Ridge Road at Denmark  
Elev. 126.34, City Datum  
Date of Topography Survey: May, 1990

### Drainage Data

$A_w = 0.46$	$A_e = 1.97$
$I_{p,w} = 4.56$	$I_{p,e} = 4.56$
$Q = CIA = 0.9 \times 0.46 \times 4.56$	$Q = CIA = 0.9 \times 1.97 \times 4.56$
$= 1.99 \text{ cfs}$	$= 8.0 \text{ cfs}$
	<u>18" SWS (max)</u>



Vicinity Map  
no scale

S. E. Anderson PE/LS  
Whitewater, Kansas  
May, 1990