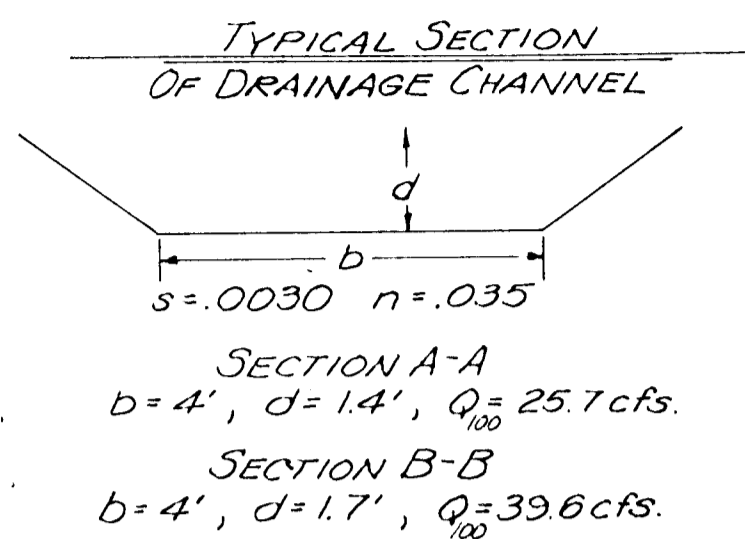


# Drainage Plan of 96 BUSINESS PARK

## SEDGWICK COUNTY, KANSAS



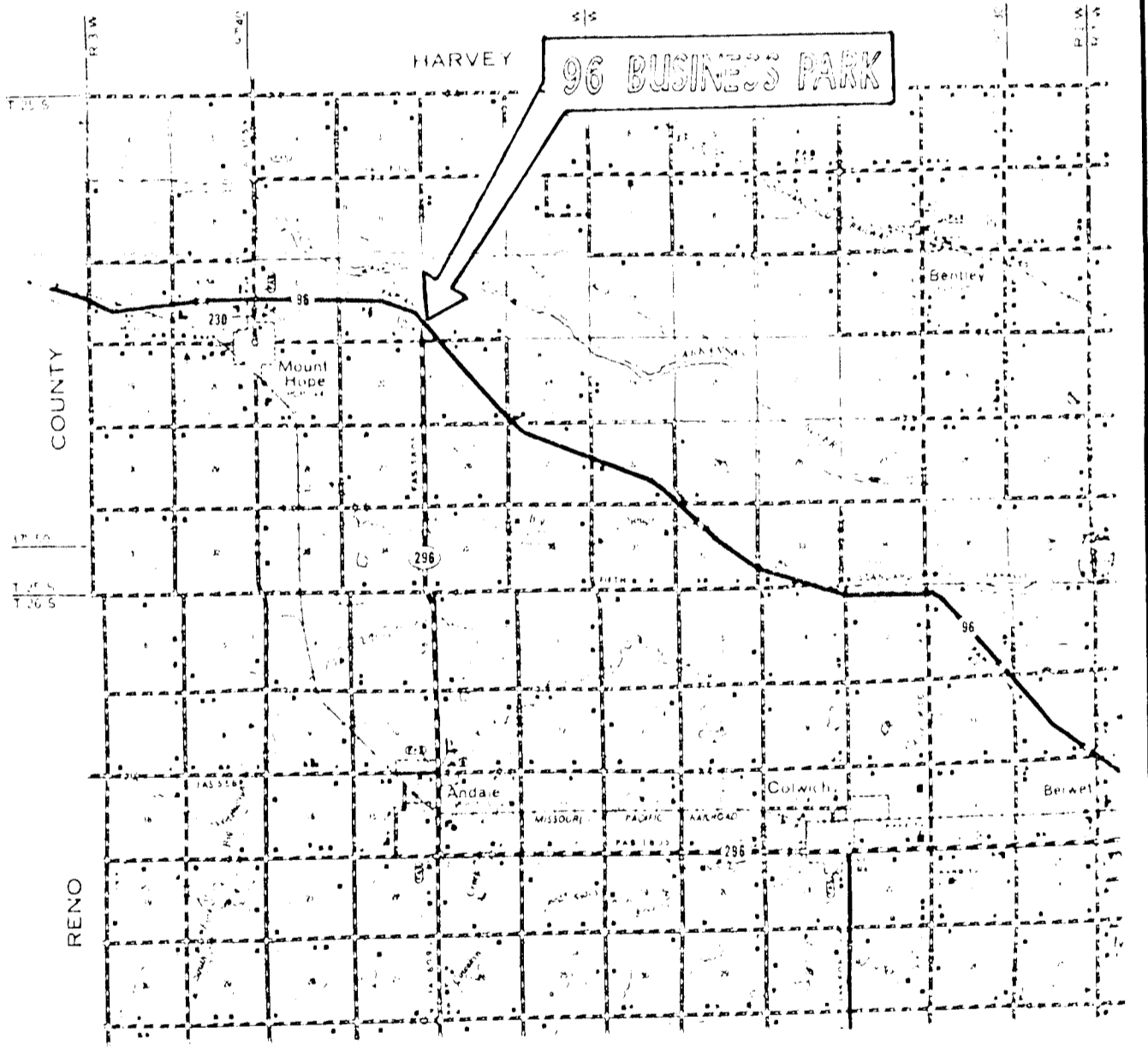
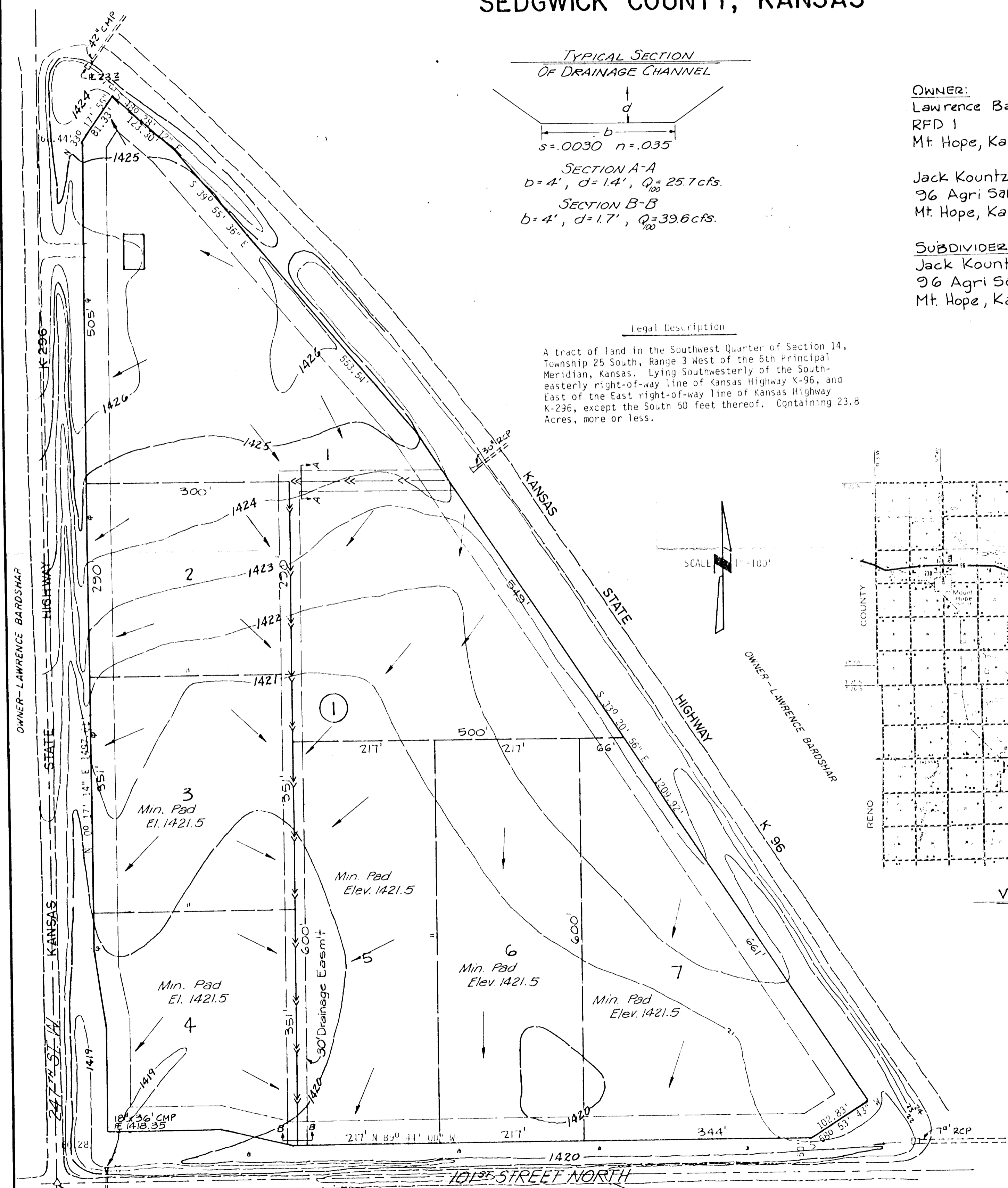
OWNER:  
Lawrence Bardshar  
RFD 1  
Mt Hope, Kansas 67108

Jack Kountz  
96 Agri Sales  
Mt Hope, Kansas 67108

SUBDIVIDER:  
Jack Kountz  
96 Agri Sales  
Mt Hope, Kansas 67108

Legal Description

A tract of land in the Southwest Quarter of Section 14, Township 25 South, Range 3 West of the 6th Principal Meridian, Kansas. Lying Southwesterly of the Southeasterly right-of-way line of Kansas Highway K-96, and East of the East right-of-way line of Kansas Highway K-296, except the South 50 feet thereof. Containing 23.8 Acres, more or less.



BENCH MARK  
Railroad spike in power pole  
50' West & 30' North of SW  
Corner, SW 1/4, Section 14,  
Township 25 South, Range 3 West  
El. 1420.95

TOPOGRAPHY  
Dec. 1979  
Oct. 1983

**Booker/Freund**  
Engineers Architects Planners