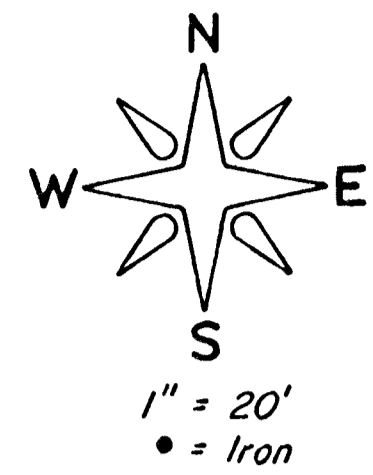


CRESTVIEW COUNTRY CLUB ESTATES
EAST MEADOWS ADDITION

CRESTVIEW COUNTRY CLUB ESTATES
EAST MEADOWS 2ND ADD.

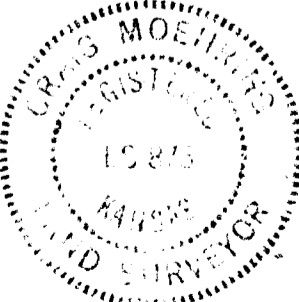


- LEDGEND -
- W = Water Main
 - F.H. = Fire Hydrant
 - G = Gas Main
 - T.C. = Top of Curb
 - FL. = Flow Line
 - AS² = Spot Elevation
 - OE. = Overhead Electric
 - S.S. = Sanitary Sewer
 - SS-F.M. = San. Sewer Force Main

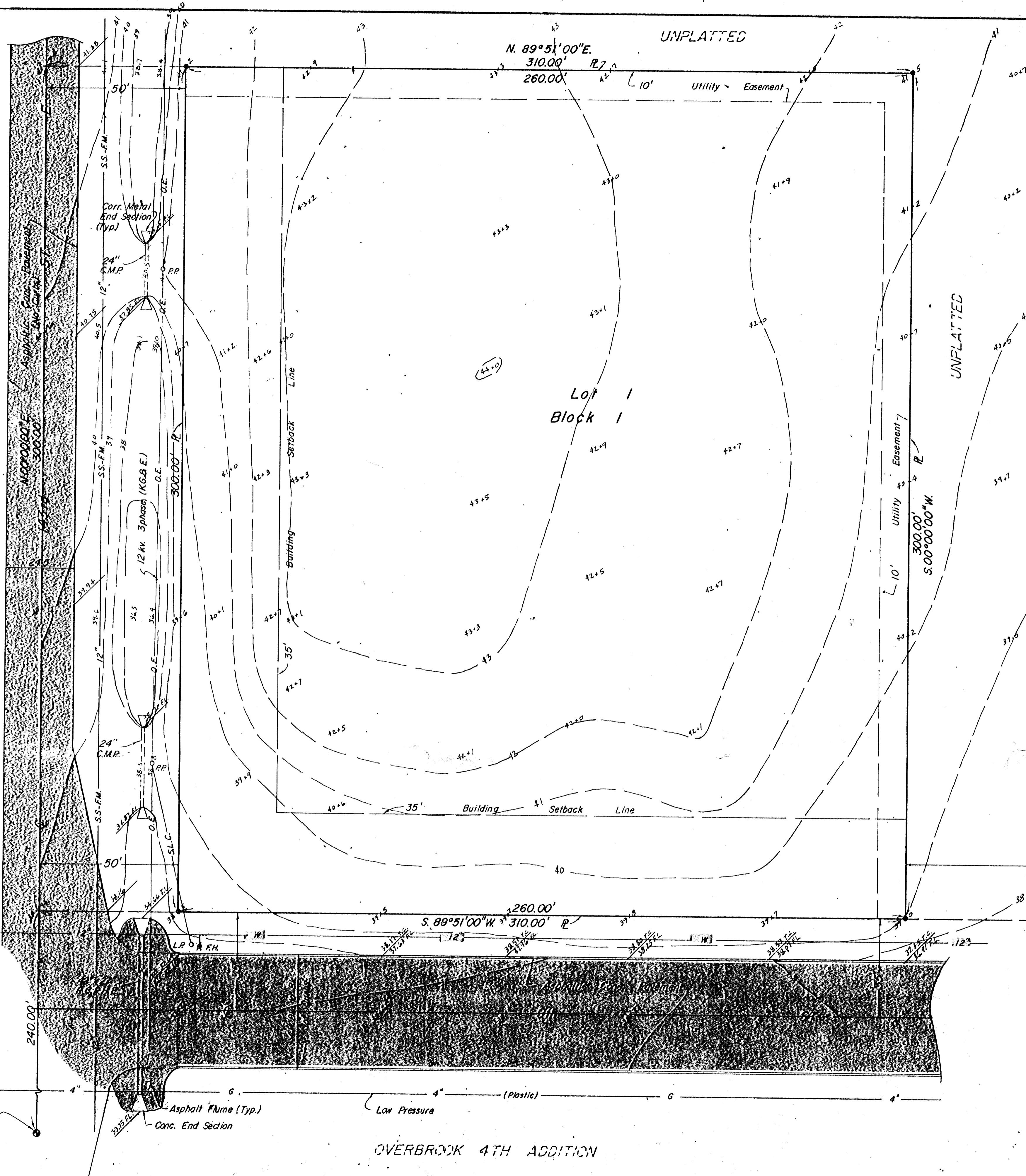
BENCHMARK -
R.R. Spike in Light Pole
at S.W. Prop. Corner.
Elev. 1338.06 M.S.L.

Add 1300.00 to spot
elevations to convert to
M.S.L.

MOHRING & ASSOCIATES
CONSULTING ENGINEERS
WICHITA
Feb. 14, 1966



S.W. Cor. NW 1/4,
Sec. 13, T.27S, R.2E.

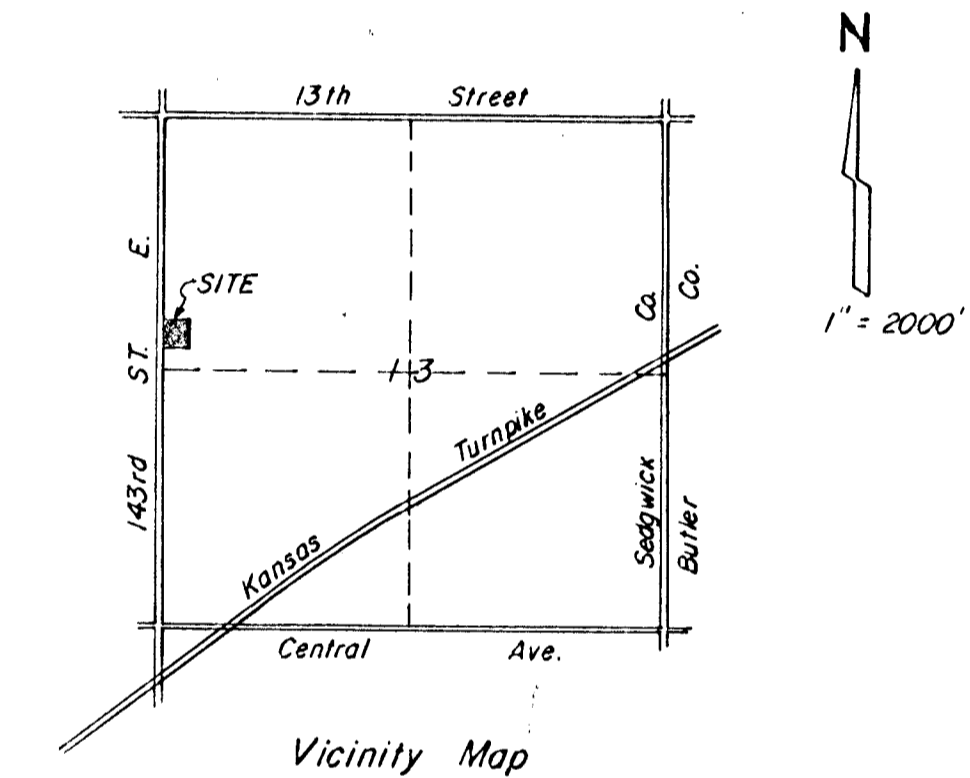


PRELIMINARY PLAT
of
NOORDHOEK ADDITION
TO SEDGWICK COUNTY, KS.

LEGAL DESCRIPTION -

BEGINNING AT A POINT IN THE WEST LINE AND 240.0' NORTH OF THE SOUTHWEST CORNER OF THE NW 1/4 OF SEC. 13, T27S, R2E OF THE 6TH P.M., SEDGWICK COUNTY, KANSAS; THENCE EAST PARALLEL WITH THE SOUTH LINE OF SAID NW 1/4, A DISTANCE OF 310.0'; THENCE NORTH PARALLEL WITH THE WEST LINE OF SAID NW 1/4, A DISTANCE OF 300.0'; THENCE WEST 310.0'; THENCE SOUTH 300.0' TO THE POINT OF BEGINNING, EXCEPT THE WEST 50.0' THEREOF.

THE ABOVE DESCRIBED TRACT CONTAINS 1.79 ACRES MORE OR LESS.



Zoning - "R-1" with conditional use permit.

8" Stub N.
M.H. Rim - 1336.72
FL. - 1322.09

OVERBROOK 4TH ADDITION