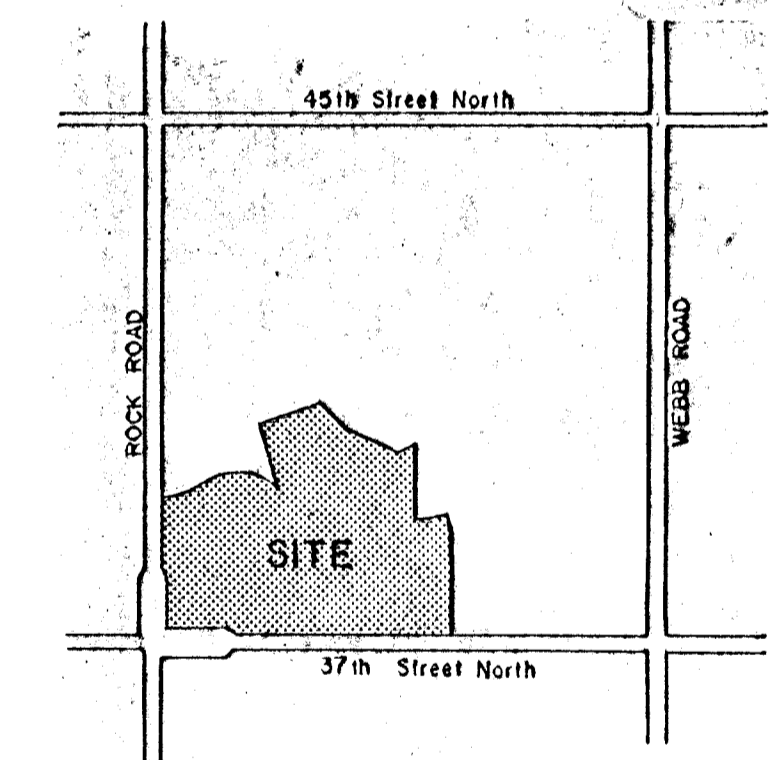
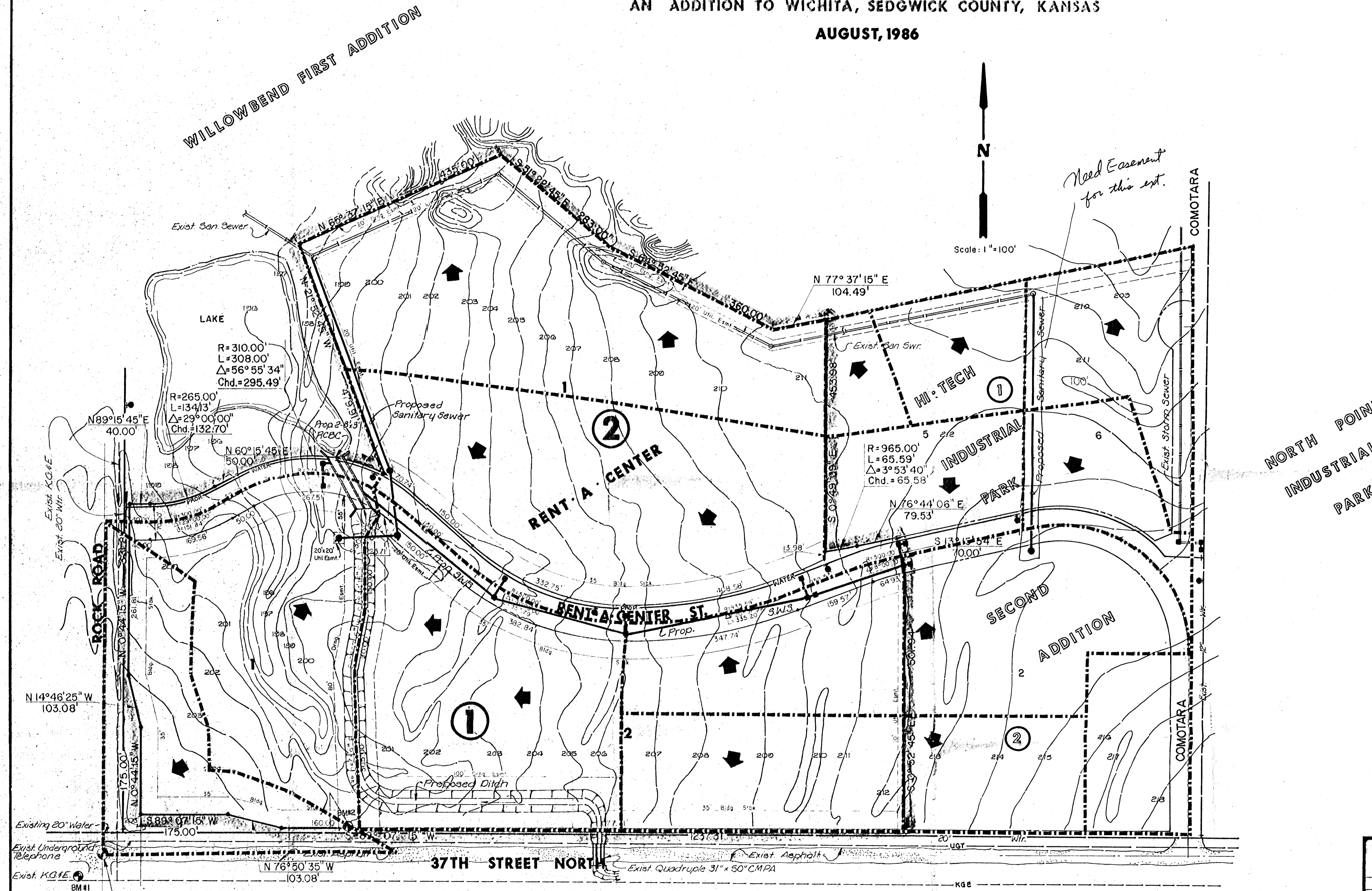


**DRAINAGE AND UTILITY CONCEPT  
FOR  
RENT-A-CENTER**  
AN ADDITION TO WICHITA, SEDGWICK COUNTY, KANSAS  
AUGUST, 1986



**LOCATION MAP**

**BENCH MARKS**

- B.M. #1 City Standard 44' S & 48' W of Centerline of 37th & Rock Rd. Elev=204.11
- B.M. #2 " " cut on NE corner Southwestern Bell equipment pad on N side of 37th & 500' E of Rock Rd. Elev=205.71

NOTES:  
OWNERS: RENT-A-CENTER  
9920 E. Harry  
Wichita, Kansas 67207

Topography from MKEC survey July, 1986

SW Cor. Sec. 29  
T.26 S., R.2 E., 6th PM.

|   |                                       |            |
|---|---------------------------------------|------------|
|   | <b>RENT A CENTER</b>                  | Design     |
|   | <b>DRAINAGE &amp; UTILITY CONCEPT</b> | Drawn by   |
|   |                                       | Checked by |
|   |                                       | Date       |
|   |                                       | Job no.    |
| MID-KANSAS ENGINEERING CONSULTANTS PA<br>3500 NORTH ROCK ROAD<br>BUILDING #800<br>WICHITA, KANSAS 67226 |                                       | Sheet      |
| 862-6561  |                                       | of         |