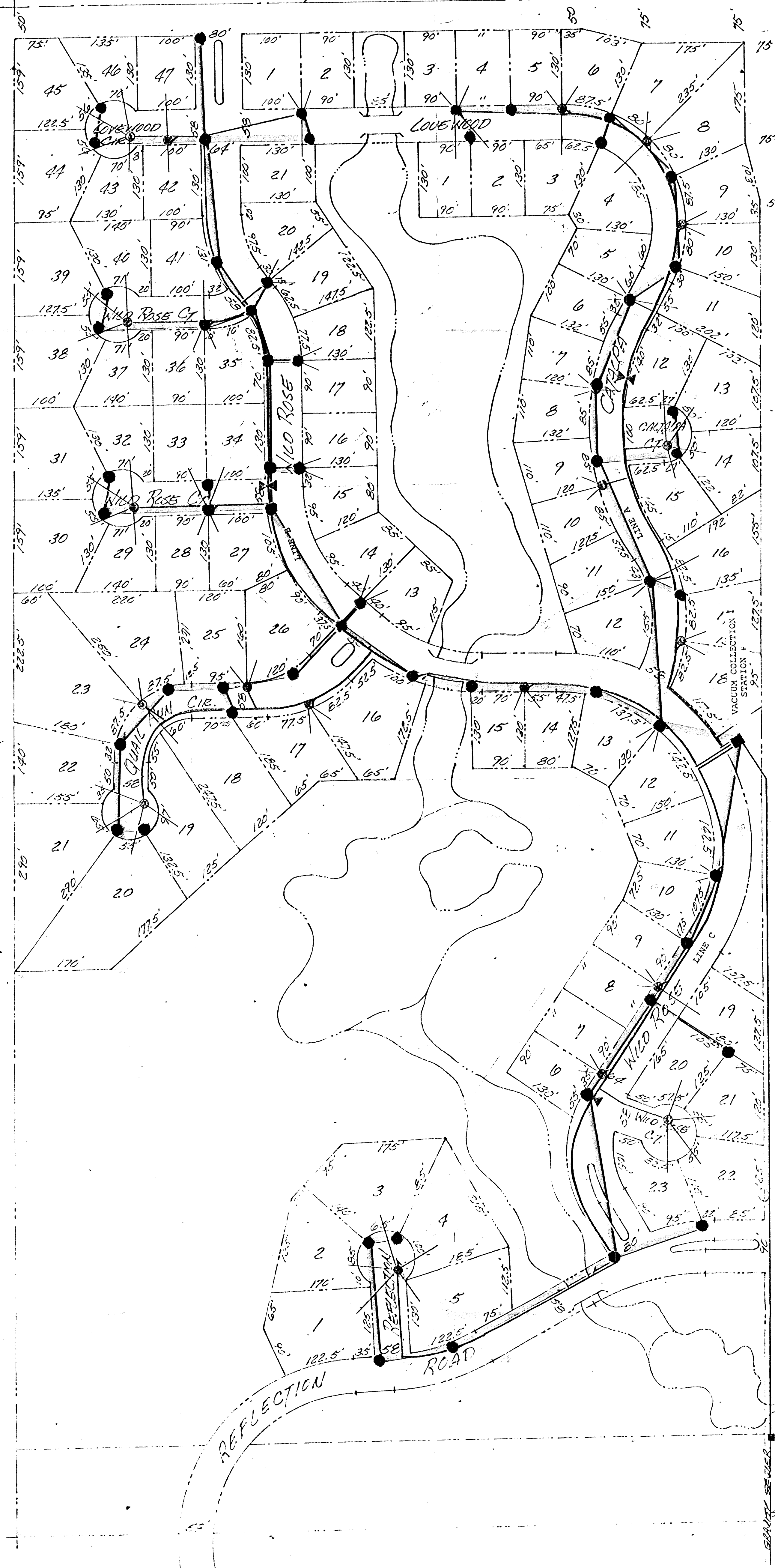


RECEIVED
JAN 15 1980
AIRVAL

Q 29th St. No. 7



LEGEND

- 3" VACUUM SEWER LINE
- 4" VACUUM SEWER LINE
- 6" VACUUM SEWER LINE
- 8" VACUUM SEWER LINE
- 10" VACUUM SEWER LINE
- FORCE MAIN
- AIRVAC VALVE LOCATION
- AIRVAC TIAL VALVE LOCATION
- DIVISION VALVE LOCATION

AIRVAC PROJECT NO. 90-102

RIDGE ROAD

FORCE MAIN

11.0.74
1-11-11-28-87
91 LOTS
MIN. LOT AREA = 11,700'