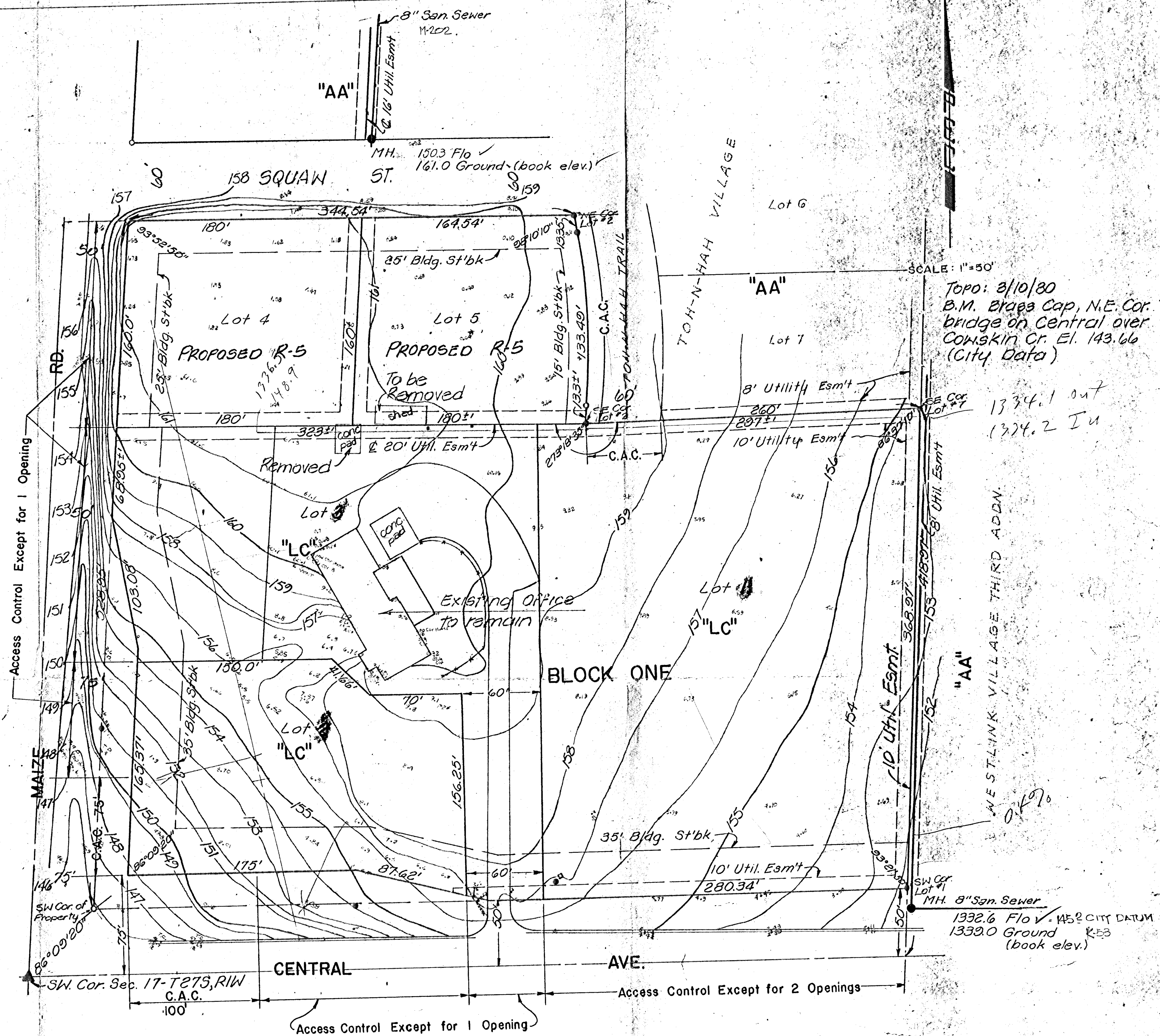


UTILITIES:
 POWER: 12.5 k.v. 3φ, 4wires available on East side of Maize Rd. & So. side of Central. (K.G. & E.)
 WATER: 16" AC Main 38± So. of & of Central, runs East-West (City of Wichita.)
 GAS: 2" steel (Inter. Press) on Central 41' So. of & Central (Arkia Gas)
 TELEPHONE: On North Side of Central both services Overhead & underground (S. Western Bell)
 SEWER: As shown.



REGENCY PLAZA

PRELIMINARY PLAT

OWNER/DEVELOPER: THURMAN SMITH & DONALD C. SLAWSON
 ENGINEER: PROFESSIONAL ENGINEERING CONSULTANTS 1440 ENGLISH, WICHITA, KS.
 AUGUST, 1980.