

KLEBER ADD  
L. R. JONES THIRD ADDITION

0.41111' Easmt

2' 54.84'

CURB

LINE B See  
Sh No. 11 for  
Profile

Sta 996+50 Const  
Curb Inlet Type 22 Lt.  
Instal 18' x 52'  
Storm Sewer (RCP)(E)  
Connect to 8' x 3' Special RCB  
See Sh No. 16 E 19

Sta 49+15 Const  
Curb Inlet Type 22 Rt.  
Instal 18' x 52'  
Storm Sewer (RCP)(E)  
See Sh No. 16 E 19

LINE A See  
Sh No. 11 for  
Profile

Sta 49+15 Const  
Curb Inlet Type 22 Lt.  
Instal 18' x 50'  
Storm Sewer (RCP)(E)  
With End Section Lt.  
See Sh No. 16 E 19

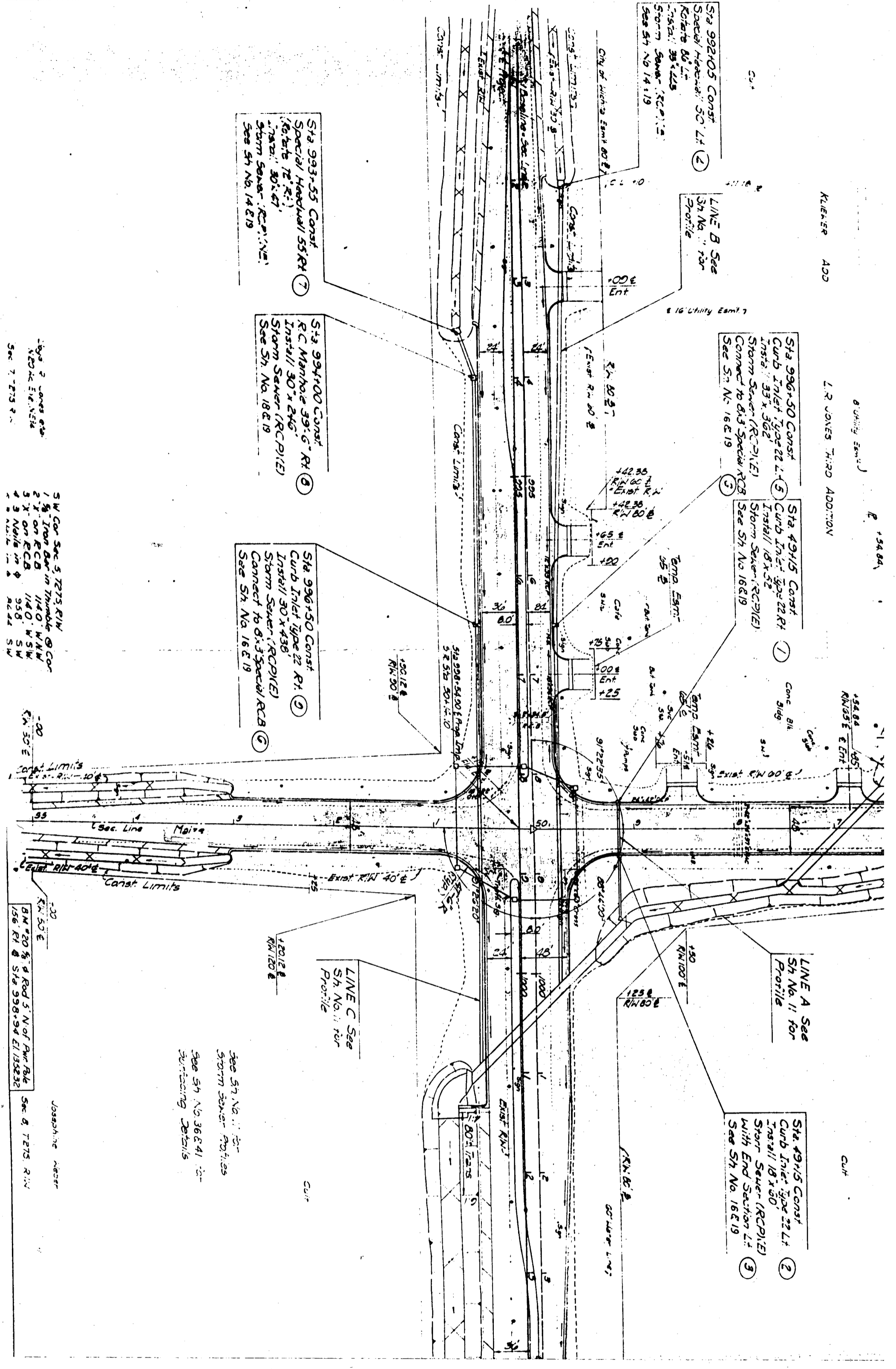
Sta 993+55 Const  
Special Headwall 55' Rt.  
Instal 12' x 47'  
Storm Sewer (RCP)(E)  
See Sh No. 14 E 19

Sta 994+00 Const  
R.C. Manhole 39' 6" Rt.  
Instal 30' x 24' 6"  
Storm Sewer (RCP)(E)  
See Sh No. 18 E 19

Sta 996+50 Const  
Curb Inlet Type 22 Rt.  
Instal 30' x 43' 6"  
Storm Sewer (RCP)(E)  
Connect to 8' x 3' Special RCB  
See Sh No. 16 E 19

LINE C See  
Sh No. 11 for  
Profile

See Sh No. 11 for  
Storm Sewer Profiles  
See Sh No. 36 E 41 for  
Surfacing Details



SW Cor Sec 5 T27S R1W  
1 1/2' Iron Bar in Thimble @ Cor  
2' x 2' on RCB 114.0' WNW  
3' x 3' on RCB 114.0' WSW  
4' 3' Nail in 2' 24.44' SW

5 W Cor Sec 5 T27S R1W  
1 1/2' Iron Bar in Thimble @ Cor  
2' x 2' on RCB 114.0' WNW  
3' x 3' on RCB 114.0' WSW  
4' 3' Nail in 2' 24.44' SW

See Sh No. 11 for  
Storm Sewer Profiles  
See Sh No. 36 E 41 for  
Surfacing Details

See Sh No. 11 for  
Storm Sewer Profiles  
See Sh No. 36 E 41 for  
Surfacing Details

1=0°27'15" Lt. (No Curve)

Carl Roof  
E 1/2, SE 1/4, Except  
Curve Data (Arc)  
P.I. (BK) Sta 998+54.88 = S.R. Sta 50+14.74  
 $\Delta = 0°23'00"$   
 $D = 0°03'00"$   
 $R = 114.501.60$   
 $T = 383.33$   
 $L = 766.66$   
 $E = 0.64$

Sec 5, T27S, R1W  
Wm Jansen

Sta. 1000+55 Const.  
8'x3'x17' RCB Special  
(45° Skew Lt.) With Apron Rt  
DA=102 Ac. Q=112 cfs.  
L.F=0.6 H.W=2.8'  
See Sh No 24

City of Wichita Water Estm.  
Const. R/W 30' ± 7' Limits  
Exist. R/W 30' ± 7' Limits  
Exist R/W 30' ± 7'

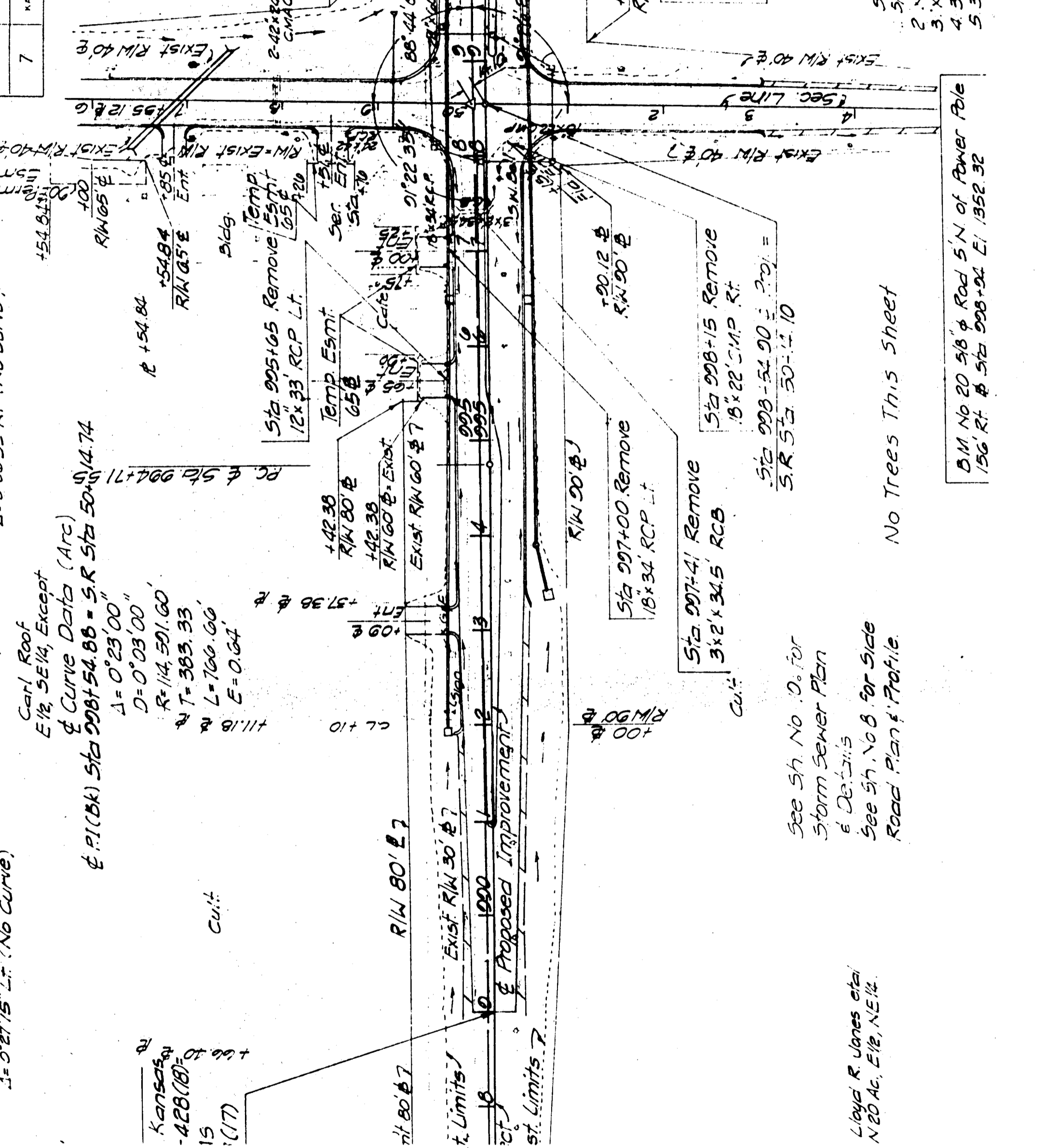
Sta. 995+05 Remove  
12'x33' RCP Lt.  
Temp. Esmt.  
65' ±  
Sec. Ent.  
Sta. 995+10  
91°22'35"

Sta. 997+00 Remove  
18'x34' RCP Lt.  
Sta. 997+41 Remove  
3'x2'x34.5' RCB  
Cut

Sta. 998+15 Remove  
18'x22' CMP Rt.  
Sta. 998-54.90 ± 2.01 =  
S.R. Sta. 50+14.74

Sta. 998+15 Remove  
18'x22' CMP Rt.  
Sta. 998-54.90 ± 2.01 =  
S.R. Sta. 50+14.74

Sta. 998+15 Remove  
18'x22' CMP Rt.  
Sta. 998-54.90 ± 2.01 =  
S.R. Sta. 50+14.74



Kansas  
428 (18)  
15  
(17)

Lloyd R. Jones et al  
N 20 Ac, E 1/2, NE 1/4

See Sh. No. 10 for  
Storm Sewer Plan  
& Details  
See Sh. No. 8 for Side  
Road Plan & Profile

No Trees This Sheet

See Sh. No. 14, 3, & 43  
Const. 1479 Sq Yds Conc. Curb  
Ditch Lining Rt.  
See Sh. No. 14, 3, & 43

Josephine Keiser  
Sec 8, T27S, R1W  
SW Cor. Sec 5, T27S, R1W  
5/8" Iron Bar in Thimble at Co.  
2' x 1' on RCB 140 W.N.W.  
3' x 1' on RCB 140 W.S.W.  
4.3 Nails in  $\phi$  95.8 S.W.  
5.3 Nails in  $\phi$  86.44 S.W.

