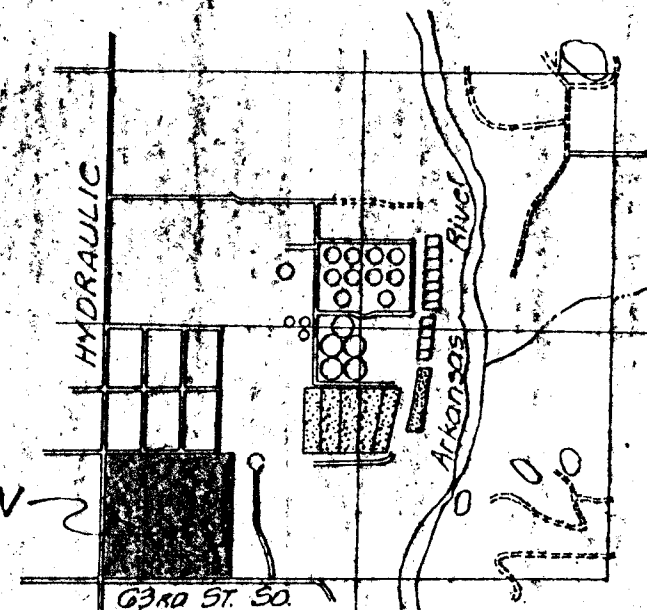


# DRAINAGE PLAN

REVISED 3-30-82

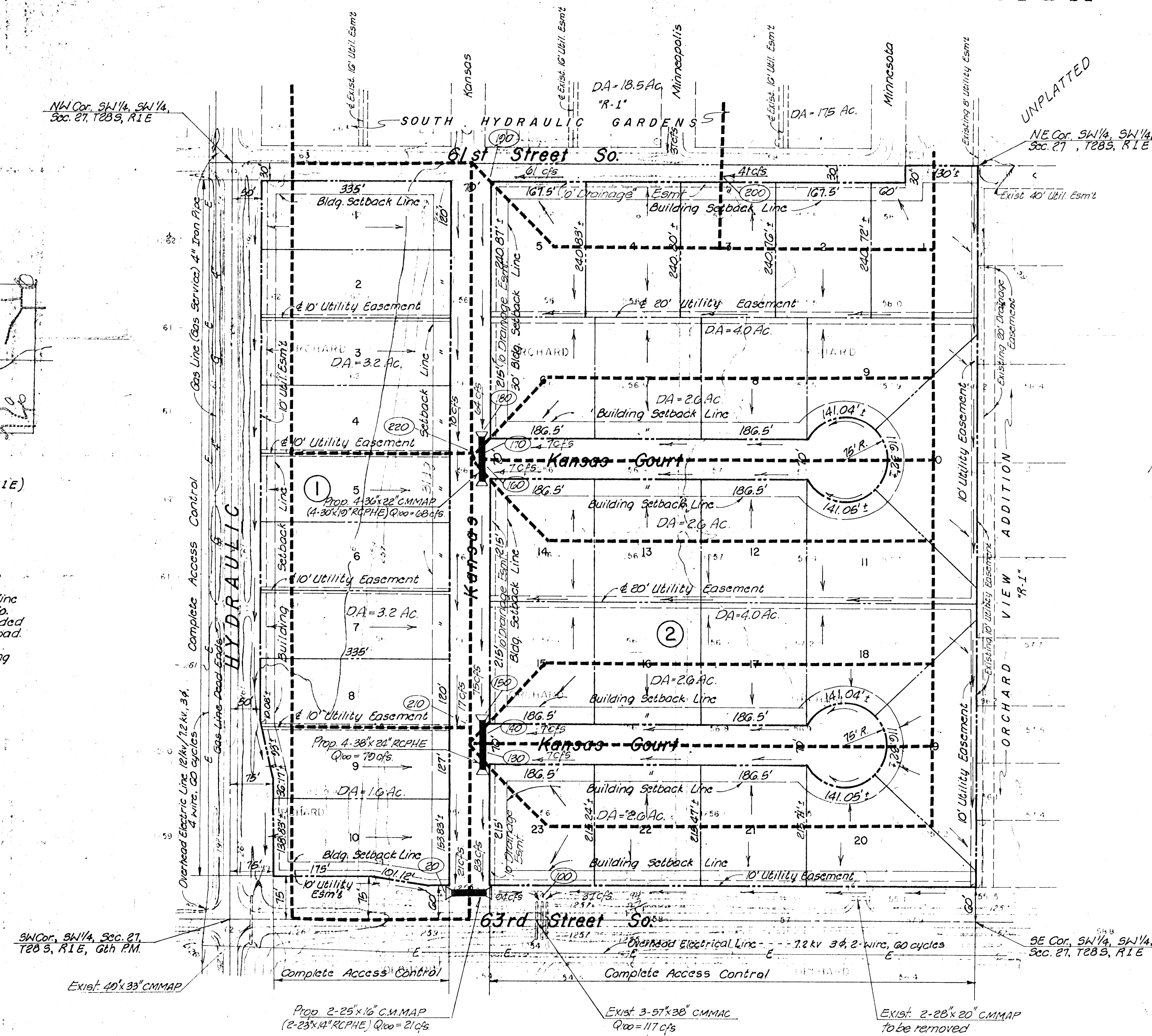
## Orchard View 2nd Addition



Location Map  
(Section 27, T28S, R1E)

### UTILITIES

1. Electric - Available as shown
2. Gas - Available as shown
3. Telephone - Nearest existing line extends only to 60th St. So. and Hydraulic. (To be extended south due to current overload)
4. Water Lines - None Existing
5. Sanitary Sewer - None Existing
6. Storm Sewer - None Existing



Owner: George W. Nicholson  
10829 Pine Aire Drive  
Sun City, Arizona  
85351

Engineer: Professional Engineering Consultants, P.A.  
1440 E. English  
Wichita, Kansas  
67211

- LEGEND:**
- Flow Direction
  - Cross-Road Culvert
  - 100 cfs 100 Yr. Point Discharge (cfs.)
  - Drainage Divide
  - (20) Drainage System Nodes

Note:  
Minimum Pad Elevation for shall be 1259.0 m.s.l. for all Lots

Bench Mark - Brass disc, NW Corner, Bridge at 63rd St. So. and Arkansas River. Elev. 1267.55 m.s.l.

March 12, 1982  
Scale: 1"=100'  
Date of Topo: January, 1982  
Zoning - Existing, 'R' and 'R-1' Approved, 'R-1'

SW 1/4, SW 1/4 SECTION 27, 28S, 1E.  
SEDGWICK COUNTY, KANSAS

P. E. C. - ALLIED LABORATORIES

