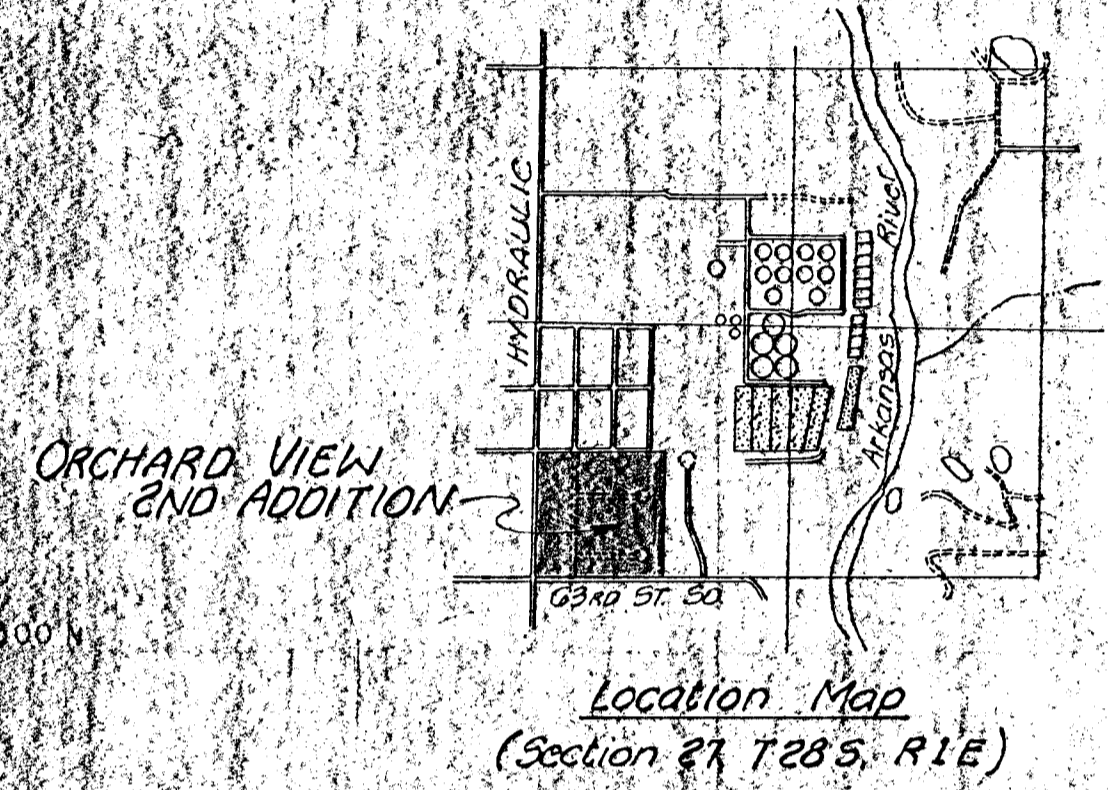


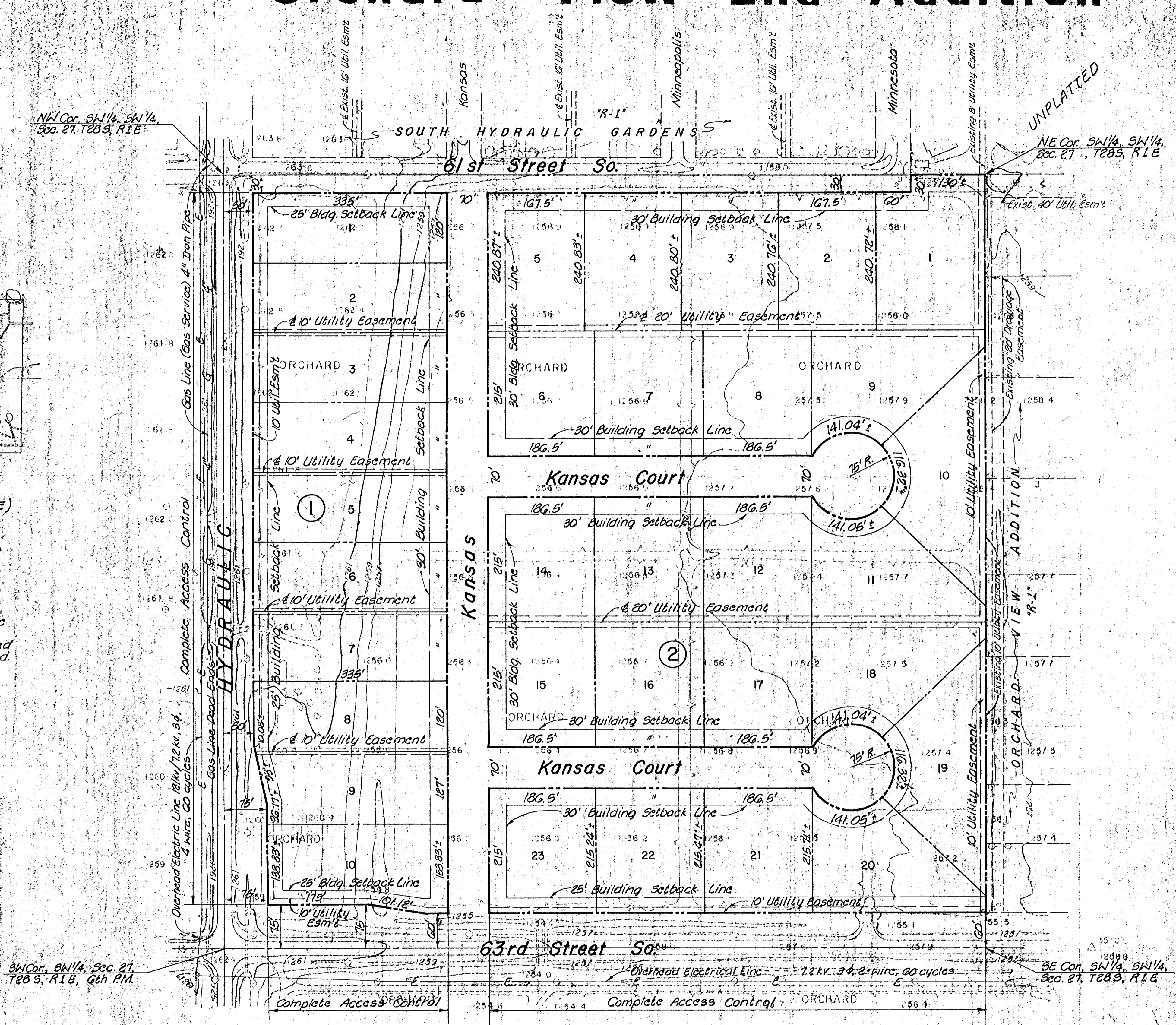
# PRELIMINARY PLAT

## Orchard View 2nd Addition



### UTILITIES

1. Electric - Available as shown
2. Gas - Available as shown
3. Telephone - Nearest existing line extends only to 60th St. So. and Hydraulic. To be extended south due to current overload.
4. Water Lines - None Existing
5. Sanitary Sewer - None Existing
6. Storm Sewer - None Existing



Owner: George W. Nicholson  
10829 Pine Airs Drive  
Sun City, Arizona  
85351

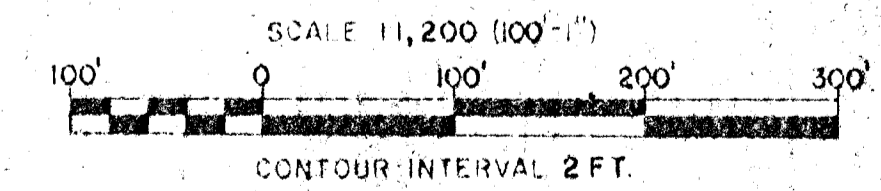
Engineer: Professional Engineering Consultants, P.A.  
1440 E. English  
Wichita, Kansas  
67211

Bench Mark - Brass disc, N&I  
Corner, Bridge at 63rd St.  
So. and Arkansas River.  
Elev. 1267.55 msl.

February 10, 1982  
Scale: 1"=100'  
Date of Topo: January, 1982  
Zoning - Existing, 'R' and 'R-1'  
Approved, 'R-1'

TOPOGRAPHIC MAP OF LANDS LOCATED AT  
S.W. 1/4, S.W. 1/4 SECTION 27, 28S. 1E.  
SEDGWICK COUNTY, KANSAS

SURVEYING & ENGINEERING  
P. E. C. - ALLIED LABORATORIES



PHOTOGRAMMETRY BY  
MILES AIR PHOTO SURVEY  
DWAYNE KANSAS CORP.  
195182-510 FILE M-38 P-40

AIRIAL PHOTOGRAPHY  
TYPE VERTICAL AT 40% P.S.  
ALTITUDE 3,000 FT. A.M.S.L.  
DATE/SCOTT-LOG-07-820-18M