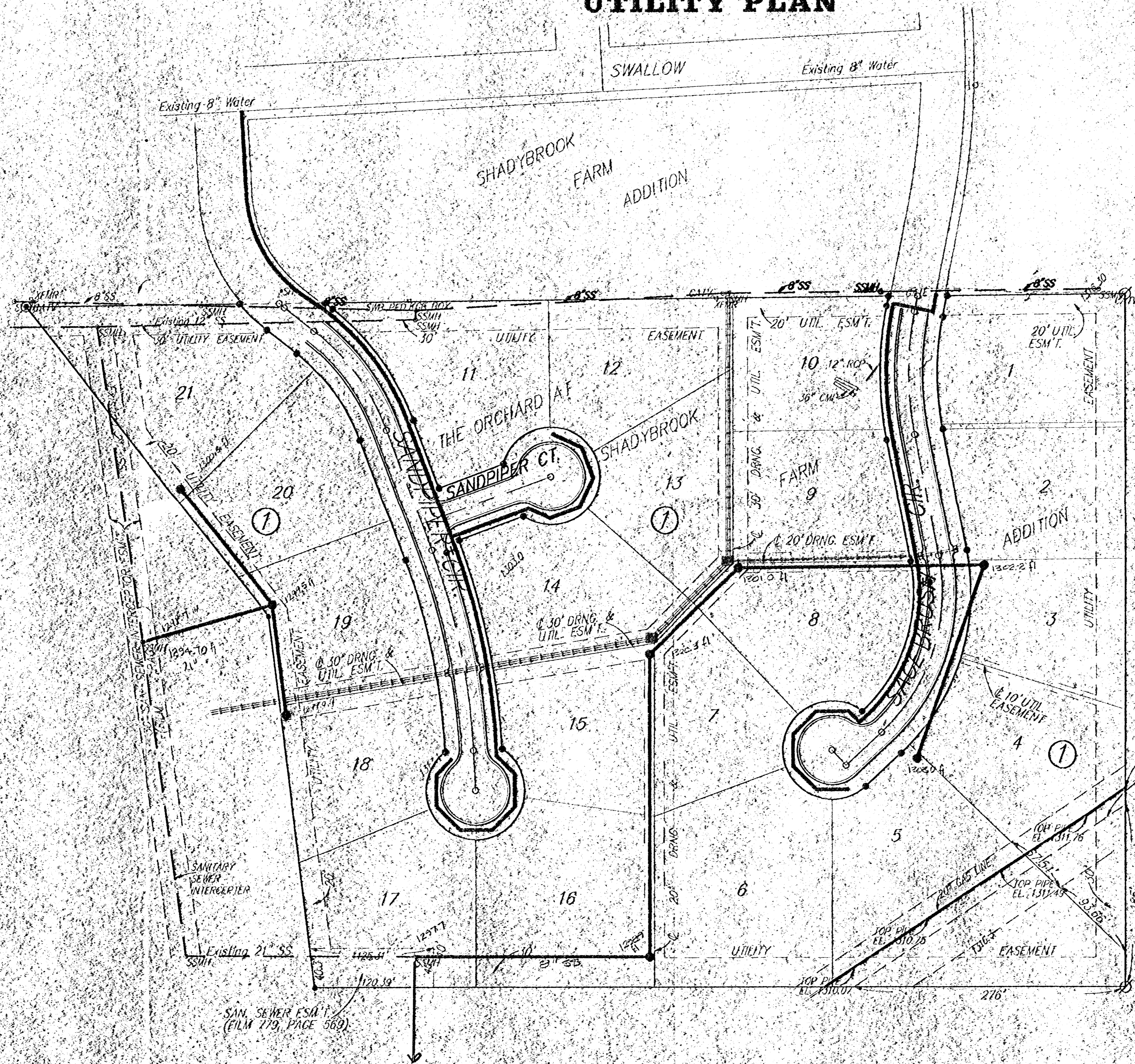


# THE ORCHARD AT SHADYBROOK FARM

SEDGWICK COUNTY, KANSAS

## UTILITY PLAN



SCALE:  
1" = 60'

EXISTING CITIES SERVICE  
GAS PIPELINE EASEMENT  
ASSIGNED TO WILLIAMS  
NATURAL GAS COMPANY  
(FILM 1085, PAGE 1426)

**THE ORCHARD AT SHADYBROOK FARMS  
UTILITY PLAN**

**B** BAUGHMAN COMPANY P.A.  
ENGINEERING & SURVEYING  
315 7262-7271 • 315 ELLIS • WICHITA, KANSAS 67211

PROJECT NUMBER: \_\_\_\_\_ SHEET: 1 OF 1

DESIGN: NEW/DY	DRAWN: DY	UTIL. CHECKED: _____	DATE: SEPT 93	SCALE: 1" = 60'
----------------	-----------	----------------------	---------------	-----------------