

# DRAINAGE PLAN

## DILLON 7TH. ADDITION

WICHITA, KANSAS.

State of Kansas } S.S. We, Baughman Company, P.A., Surveyors in aforesaid county and state do hereby certify that we have surveyed and platted "DILLON 7TH. ADDITION," Wichita, Kansas and that the accompanying plat is a true and correct exhibit of the property surveyed, described as and being a replat of Lots 1, 2, 3, 4, 5, 6, 7, 8 and 9, Block 3 and Lots 1, 2, 3, 4, 5, 6, 7, 8, 9, 10, 11 and 12, Block 4, together with the N 1/2 of the Alley lying south of and adjacent to said Lots 6 and 7 and all of Reserve "A" and Reserve "B" except the south 100 feet of the east 100 feet thereof, Block 4, together with S 1/2 of the alley lying north of adjacent to said Reserve's "A" and "B" and together with all of Ridgewood Drive, lying between said Blocks 3 and 4, Southeast Manor an Addition to Wichita, Kansas. The street, alley and easements are hereby vacated virtue of K.S.A. 1970 Supp. 12-512(b). All being situated in the SW 1/4 of Sec. 25, Twp. 27S, R.1E.

Baughman Company, P.A.

\_\_\_\_\_  
Date  
\_\_\_\_\_  
William L. Korber  
Surveyor

Know all men, by these presents that we, the undersigned, have caused the land described in the surveyors certificate to be platted into a Lot to be known as "DILLON 7TH. ADDITION," Wichita, Kansas. The easements are hereby granted for the construction and maintenance of all public utilities.

Dillon Real Estate Co., Inc.

\_\_\_\_\_  
Richard W. Dillon  
Vice-President

\_\_\_\_\_  
Paul W. Dillon  
Secretary

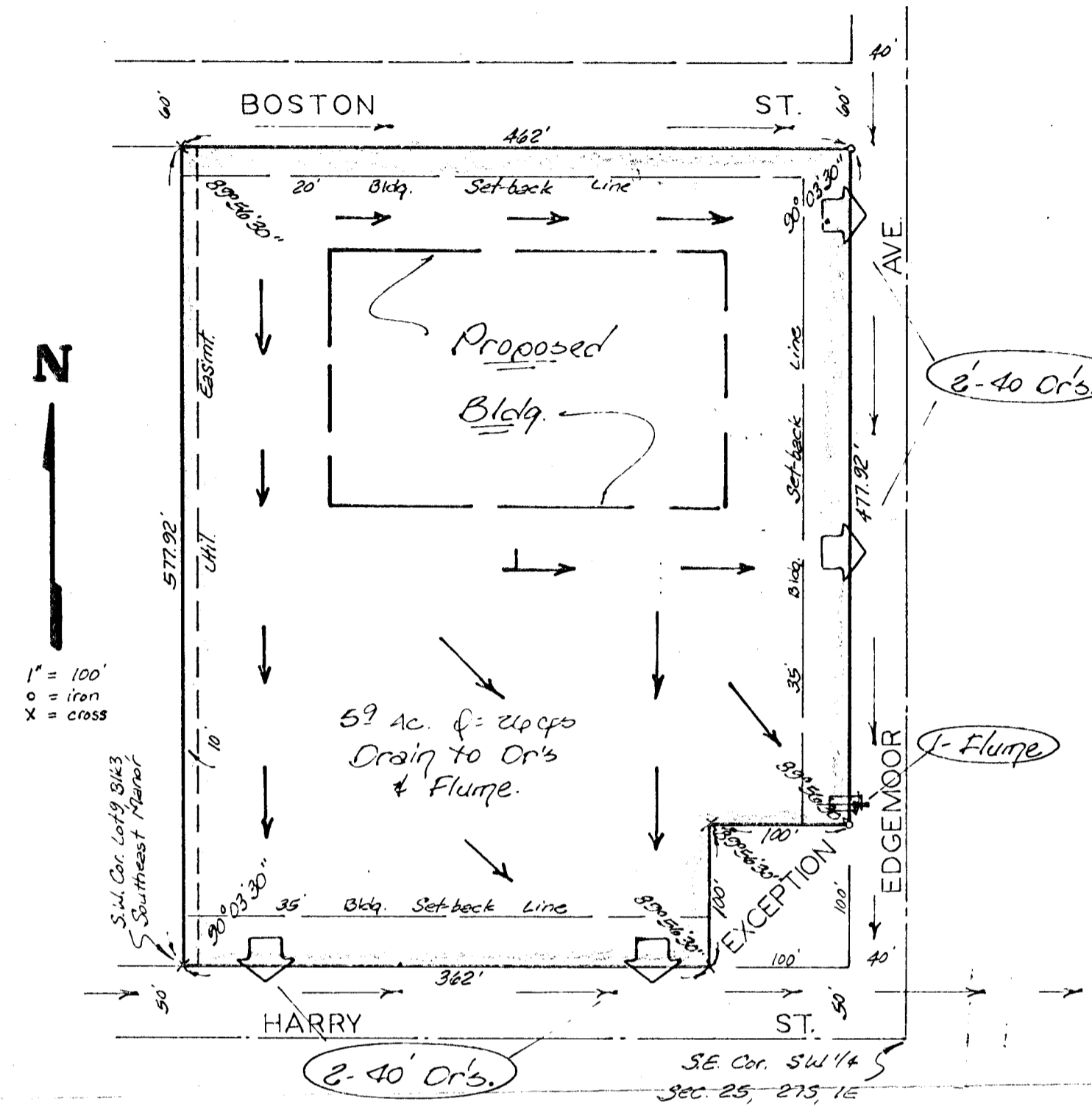
State of Kansas }  
Reno County } S.S. The foregoing instrument acknowledged before me, this \_\_\_\_\_ day of \_\_\_\_\_ 198\_\_\_\_, by Richard W. Dillon, Vice-President and Paul W. Dillon, Secretary of Dillon Real Estate Co., Inc.

\_\_\_\_\_  
Notary Public  
My Appt. Exp. \_\_\_\_\_

State of Kansas } S.S. This is to certify that this plat has been filed for record in the office of the Register of Deeds, this \_\_\_\_\_ day of \_\_\_\_\_ 198\_\_\_\_, at \_\_\_\_\_ o'clock \_\_\_\_\_ M.; and is duly recorded.

\_\_\_\_\_  
Bette F. Mearns  
Register of Deeds

\_\_\_\_\_  
Pat Ketter  
Deputy



This plat of "DILLON 7TH. ADDITION," Wichita, Kansas, has been submitted to and approved by the Wichita-Sedgewick County Metropolitan Area Planning Commission, Wichita, Kansas. Dated this \_\_\_\_\_ day of \_\_\_\_\_ 198\_\_\_\_.

\_\_\_\_\_  
James L. Gardner II  
Chairman

\_\_\_\_\_  
Robert A. Lakin  
Secretary

This plat approved, and all dedications shown hereon accepted by the Board of Commissioners of the City of Wichita, Kansas, this \_\_\_\_\_ day of \_\_\_\_\_ 198\_\_\_\_.

\_\_\_\_\_  
R.C. Brown  
Mayor

\_\_\_\_\_  
Donald C. Grisick  
City Clerk

This plat approved and all dedications shown hereon accepted by the Board of Commissioners, Sedgewick County, Kansas, this \_\_\_\_\_ day of \_\_\_\_\_ 198\_\_\_\_.

\_\_\_\_\_  
Donald E. Orapp  
Chairman

\_\_\_\_\_  
Jack Spratt  
Commissioner

\_\_\_\_\_  
Tom Scott  
Commissioner

\_\_\_\_\_  
Dorothy K. White  
County Clerk

Entered on transfer record this \_\_\_\_\_ day of \_\_\_\_\_ 198\_\_\_\_.

\_\_\_\_\_  
Dorothy K. White  
County Clerk