

PRELIMINARY PLAT
DILLON 10TH ADDITION

LOTS 1, 2 AND 3 WITH HENNING ADDITION TO WICHITA, SEDGWICK COUNTY, KANSAS TOGETHER WITH ALL OF THE ALLEY LYING SOUTH OF AND ADJACENT TO SAID LOTS 1, 2 AND 3, LOTS 4 AND 5 OF LOMA-LINDA GARDENS AN ADDITION TO WICHITA, SEDGWICK COUNTY, KANSAS AND LOT 1, LOMA-LINDA GARDENS SECOND ADDITION, WICHITA, SEDGWICK COUNTY, KANSAS.

DILLON REAL ESTATE CO., INC.

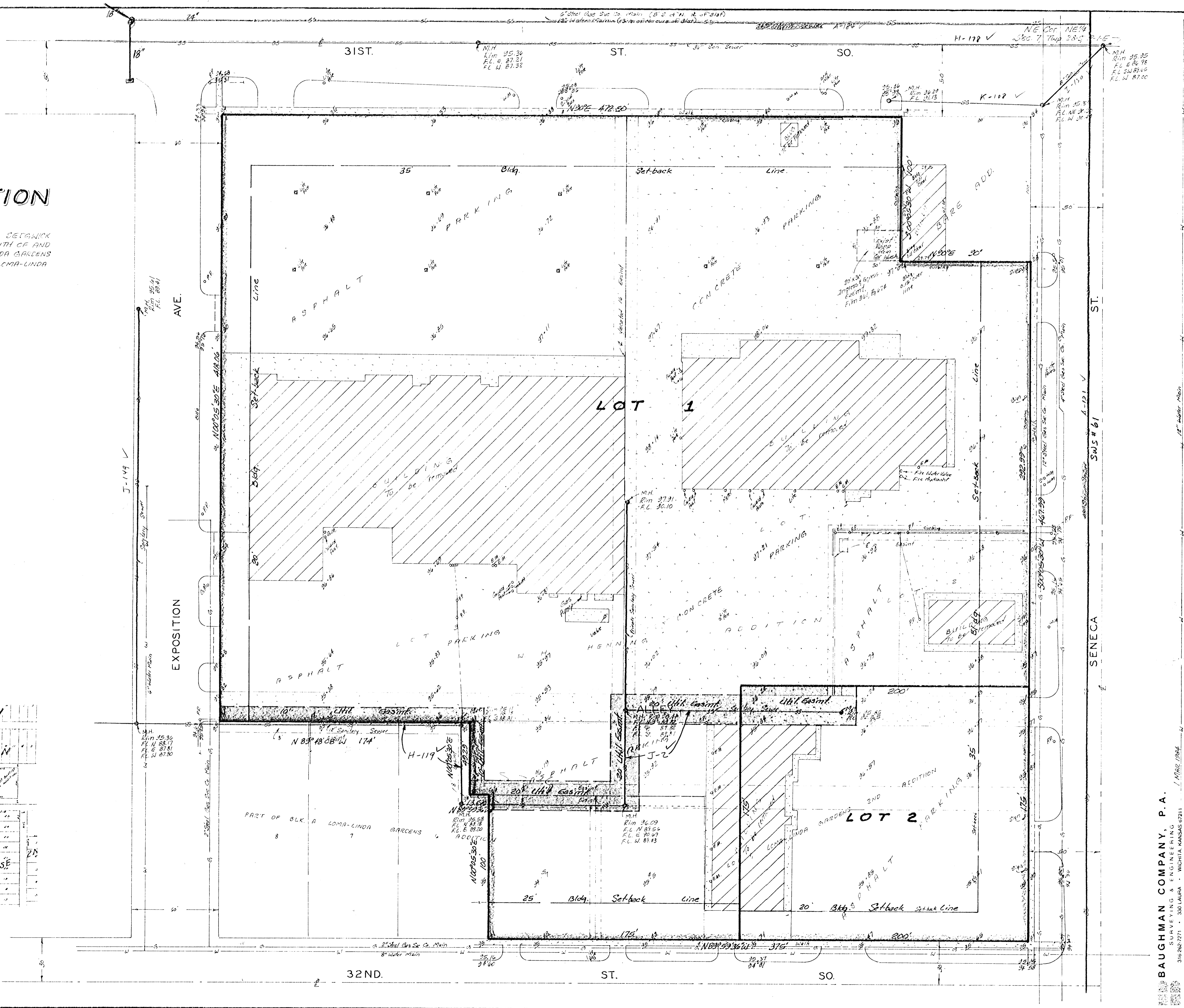
N

1" = 30'
 Elev. = City Datum

BENCH MARK:
 City Standard Disc 6" N & 2" W of
 SW Cor. of Sines & 35th St. S.
 Elev. = 92.671 City Datum



VICINITY PLAT



BAUGHMAN COMPANY, P.A.
 SURVEYING & ENGINEERING
 316-262-2771 • 300 LAURA • WICHITA, KANSAS 67211