

DRAINAGE CONCEPT SEP. 94

DILLONS 11TH ADDITION

TO WICHITA, SEDGWICK COUNTY, KANSAS

CONTRACT PURCHASER:
DILLON REAL ESTATE CO., INC.
 c/o LEE KELLY
 2700 E. FOURTH
 HUTCHINSON, KS. 67501

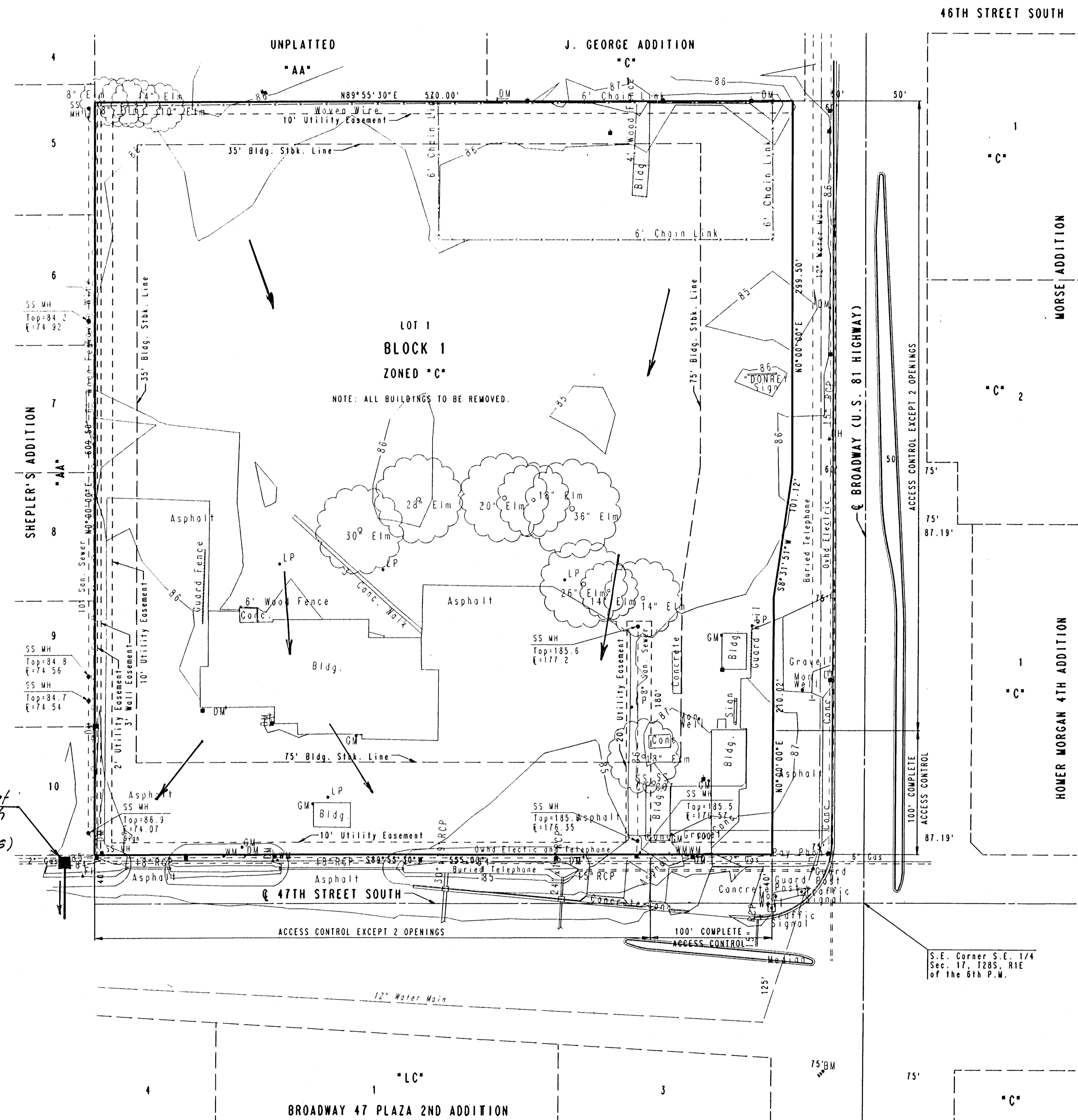
ENGINEER:
PROFESSIONAL ENGINEERING CONSULTANTS, P.A.
 303 S. TOPEKA
 WICHITA, KS. 67202

SCALE: 1"=50'
 SEPTEMBER 26, 1995
 TOPO JULY 1994

- B.M. #1: CITY OF WICHITA DISC AT AT NORTHEAST CORNER TRAFFIC SIGNAL BASE AT SOUTHWEST CORNER BROADWAY AND 47TH STREET SOUTH. ELEV. = 87.44
- B.M. #2: RAILROAD SPIKE IN EAST FACE POWER POLE, 4TH POLE NORTH OF 47TH STREET SOUTH AND 630' WEST OF BROADWAY. ELEV. = 86.86

Note:
 All site drainage to be carried overland or in storm sewer to existing or proposed storm sewer crossings in 47th St. So.

Prop. SWS Inlet
 (to be built with 47th Street improvements)



S.E. Corner S.E. 1/4 Sec. 17, T28S, R1E of the 6th P.M.