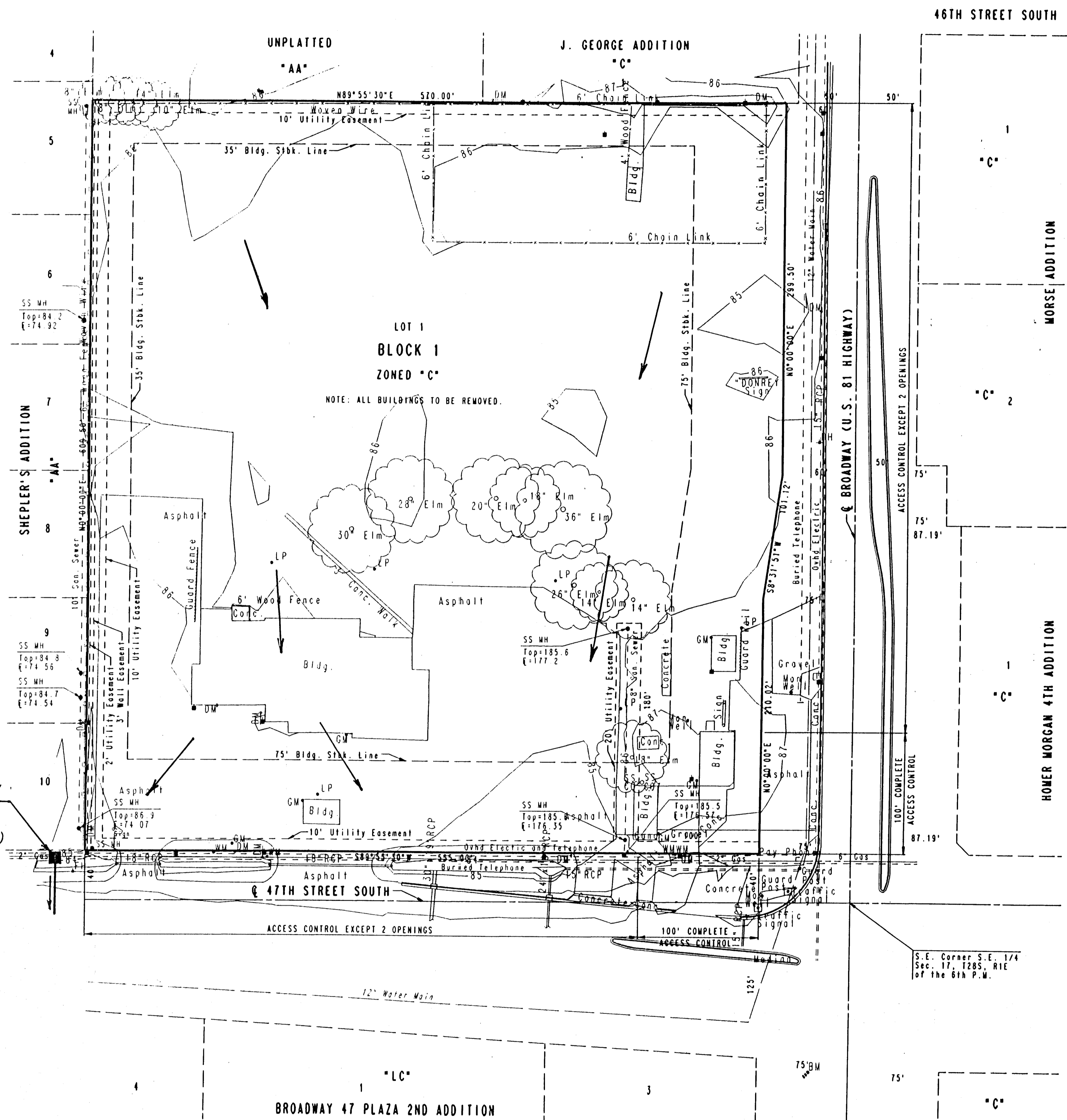


**DRAINAGE PLAN 10/94**

**DILLONS 11TH ADDITION  
TO WICHITA, SEDGWICK COUNTY, KANSAS**

CONTRACT PURCHASER:  
DILLON REAL ESTATE CO., INC.  
c/o LEE KELLY  
2700 E. FOURTH  
HUTCHINSON, KS. 67501

ENGINEER:  
PROFESSIONAL ENGINEERING CONSULTANTS, P.A.  
303 S. TOPEKA  
WICHITA, KS. 67202



SCALE: 1"=50'  
SEPTEMBER 26, 1995  
TOPO JULY 1994

- B.M. #1: CITY OF WICHITA DISC AT AT NORTHEAST CORNER TRAFFIC SIGNAL  
BASE AT SOUTHWEST CORNER BROADWAY AND 47TH STREET SOUTH.  
ELEV. = 87.44
- B.M. #2: RAILROAD SPIKE IN EAST FACE POWER POLE, 4TH POLE NORTH OF  
47TH STREET SOUTH AND 630' WEST OF BROADWAY. ELEV. = 86.86

Prop. SWS Inlet  
(to be built with  
47th Street  
improvements)

Note:  
All site drainage to be  
carried overland or in  
storm sewer to existing  
or proposed storm sewer  
crossings in 47th St. So.

A(ac.)	C <sub>z</sub>	C <sub>100</sub>	L <sub>z</sub> (in./hr.)	L <sub>100</sub> (in./hr.)	Q <sub>z</sub> (cfs)	Q <sub>100</sub> (cfs)
7.9	0.68	0.80	3.80	7.36	20.4	46.5

NOTE: "C" BASED ON "BUSINESS-NEIGHBORHOOD AREA"  
"L" BASED ON t<sub>c</sub> = 15 MIN.