

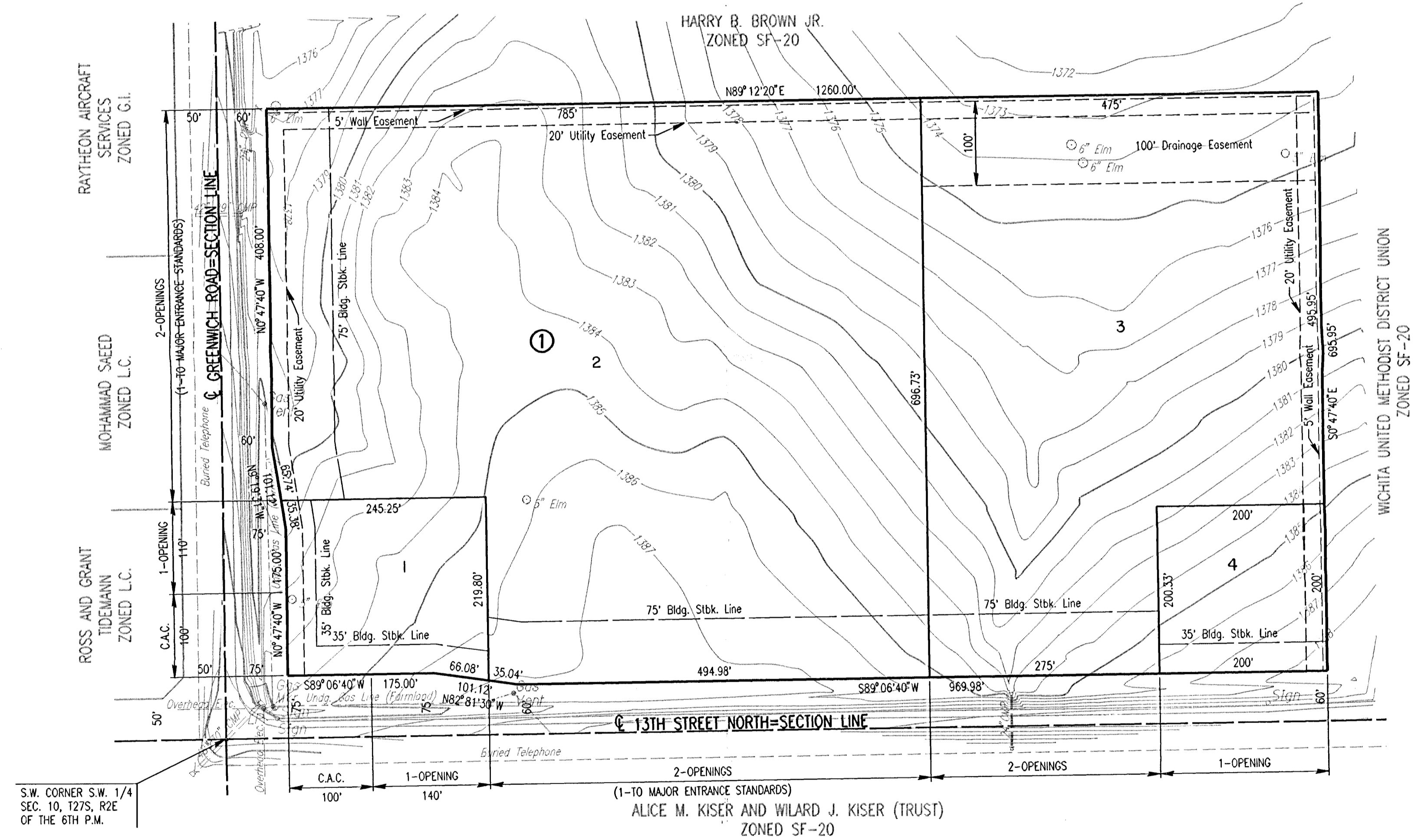
PRELIMINARY PLAT OF  
**DILLON 12TH ADDITION**

TO SEDGWICK COUNTY, KANSAS

OWNER: HARRY B. BROWN JR.  
 800 DUBLIN  
 WICHITA, KANSAS 67206

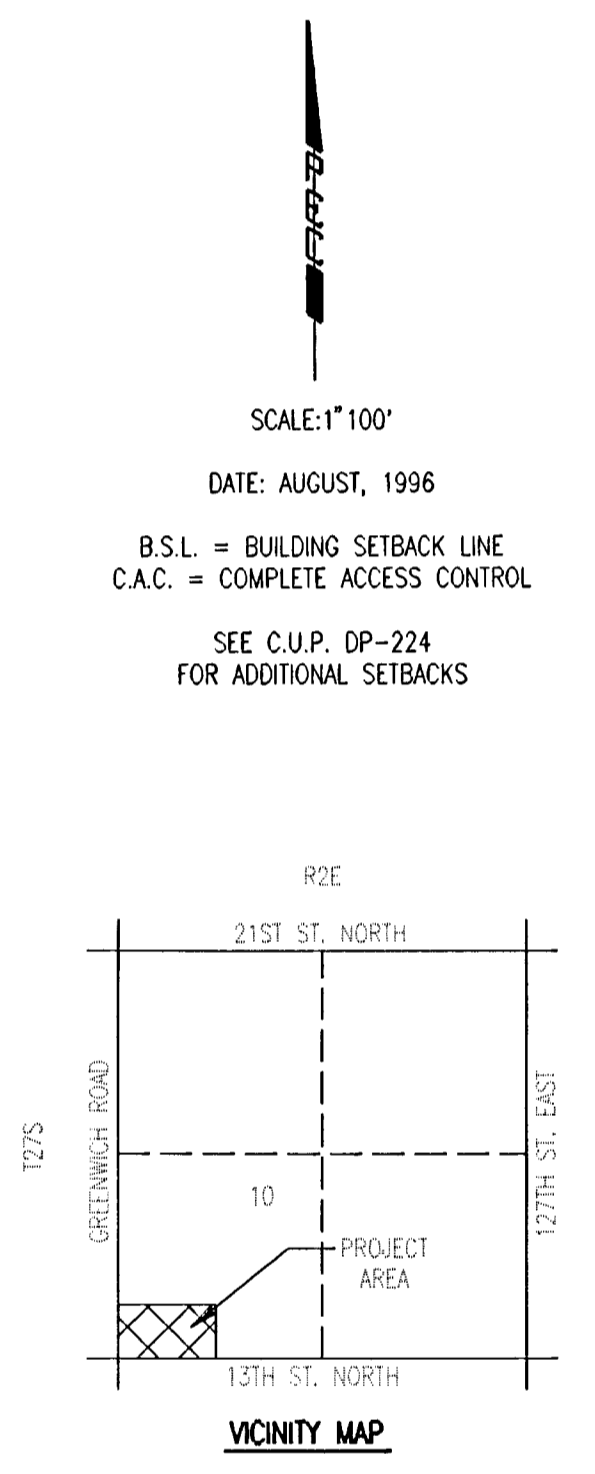
ENGINEERS: PROFESSIONAL ENGINEERING CONSULTANTS, P.A.  
 303 S. TOPEKA  
 WICHITA, KANSAS 67202

DEVELOPER: DILLON COMPANIES, INC.  
 c/o LEE KELLY  
 BOX 1608  
 HUTCHINSON, KANSAS 67504-1618



S.W. CORNER S.W. 1/4  
 SEC. 10, T27S, R2E  
 OF THE 6TH P.M.

NOTE: WATER AND SEWER AVAILABLE TO SITE ON GREENWICH ROAD  
 1/2 MILE SOUTH OF 13TH STREET NORTH.



SCALE: 1"=100'  
 DATE: AUGUST, 1996  
 B.S.L. = BUILDING SETBACK LINE  
 C.A.C. = COMPLETE ACCESS CONTROL  
 SEE C.U.P. DP-224  
 FOR ADDITIONAL SETBACKS