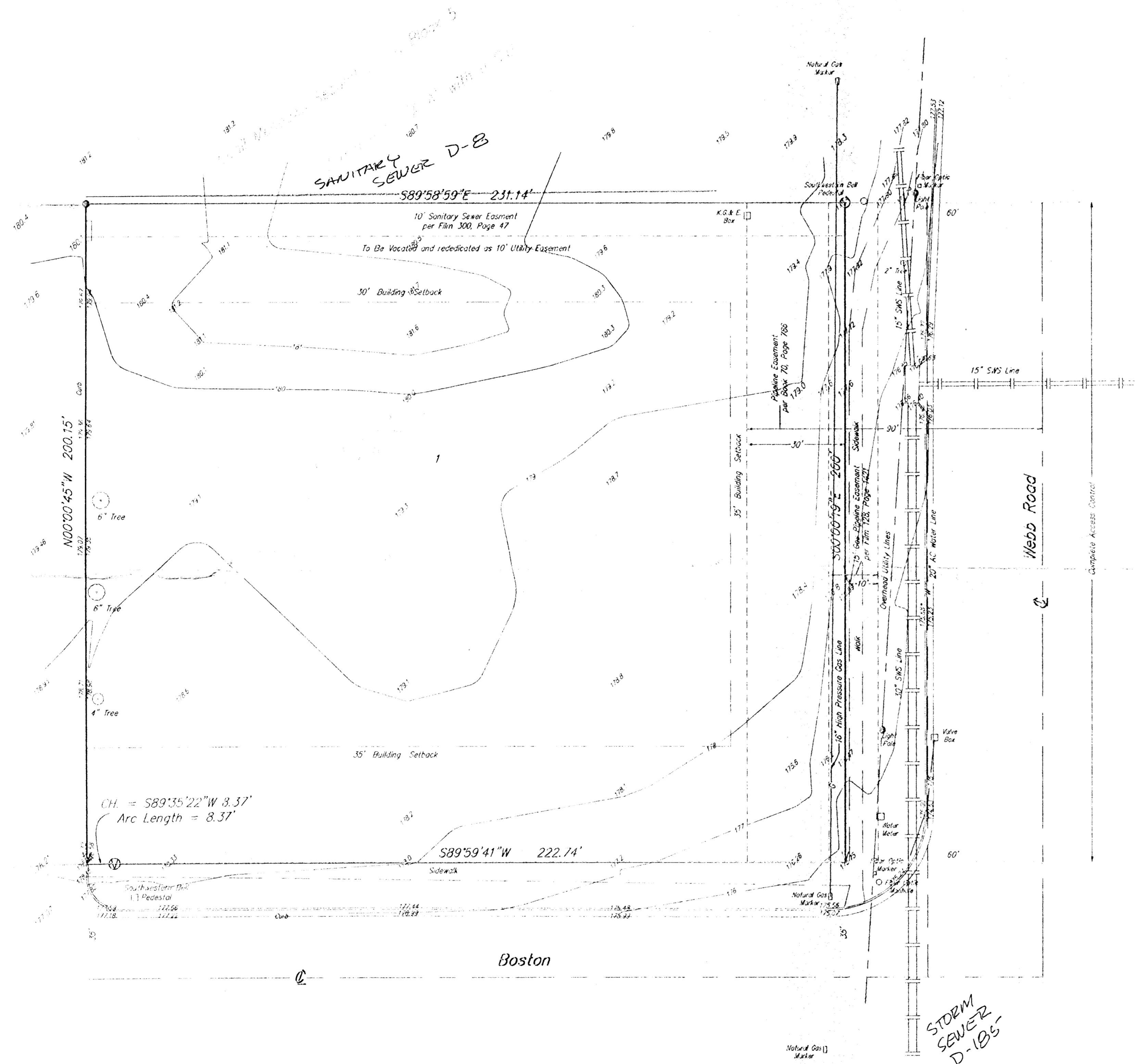


SKETCH PLAT

**DON & MARVIN ADDITION**

**WICHITA, SEDGWICK COUNTY, KANSAS**



SCALE  
1" = 20'

- Contours @ 1' intervals
- ⊖ - V-Notch 1.00'
  - ∇ - V-Notch 5.0'
  - - 3/4" Iron Pipe found
  - - #4 Baughman Meter Set

**LEGAL**

The East 231.26' of Lot 1, Block 2, Quail Meadows Fifthe Addition, to Wichita, Sedgwick County, Kansas

**BENCHMARK**

Spine Cut on the back of well 105-112 to the NE corner Lot 5, Quail Meadows 1<sup>st</sup> Tr.

**OWNER**

Donald E. Gustin  
1620 E. 48<sup>th</sup> St  
Wichita, Kansas 67217  
(316) 733-1947

Marvin Schmitzinger  
Box 424  
Hartl, Kansas 67224  
(316) 677-7494

**VICINITY MAP**

