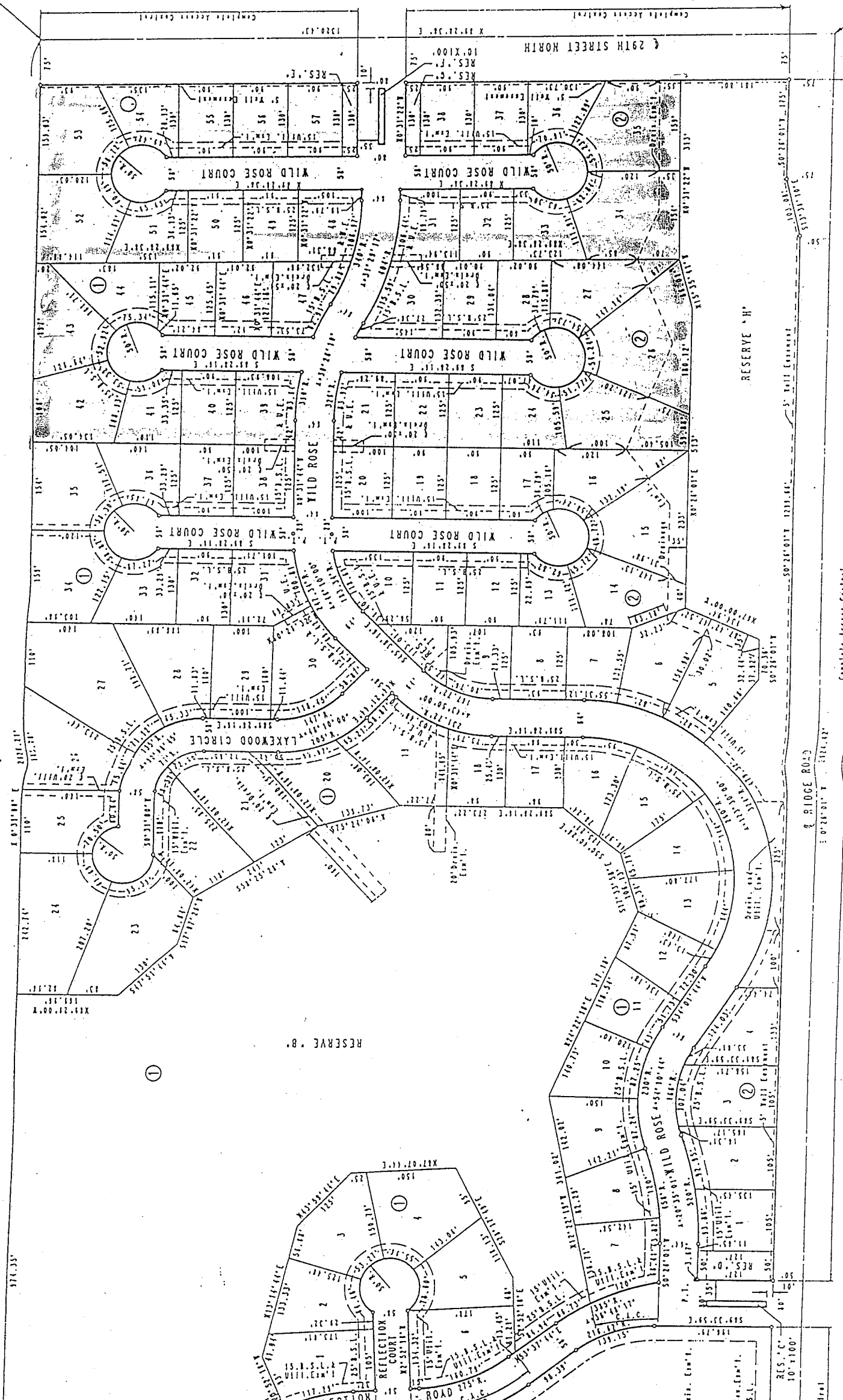


REFLECTION RIDGE 6TH ADDITION TO WICHITA, SEDGWICK COUNTY, KANSAS

K.T. CO. E. 1/2, P.C. 1/4
SEC. 1, T. 15S, R. 17E
OF THE 11th P.M.

0 - PROX SET
U.C. - UTILITY EASEMENT
S.E.C. - SEWER SERVICE LINE
C.A.C. - COMPLETE ACCESS CONTROL
I.X. - CHISELED "X" E. COR. 3'-0" DIA. X
SHOULDER W/ 1/2" RADIUS TO 1/2" ROCKER
S.E. COR. 1/2" DIA. X 1/2" RADIUS
ELEV. 1327.5 M.S.L.
ELEV. 1327.5 M.S.L.
ELEV. 1327.5 M.S.L.

WIXOM PAD ELEVATIONS (W.M. OPERATE)
ALL LOTS - 1327.5 M.S.L.



Complete Access Control

RIDGE ROAD

29th Street North

RES. C.