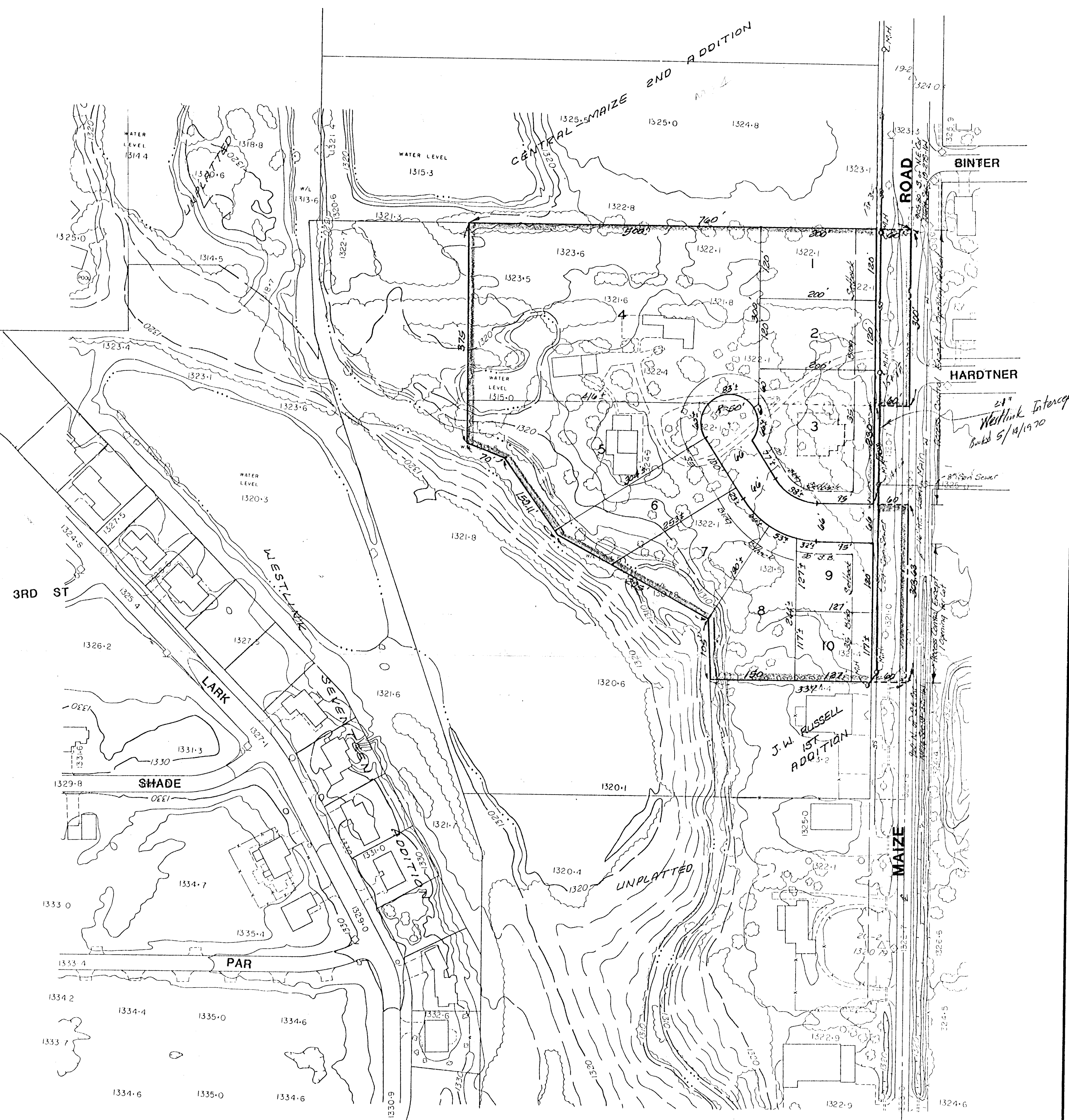
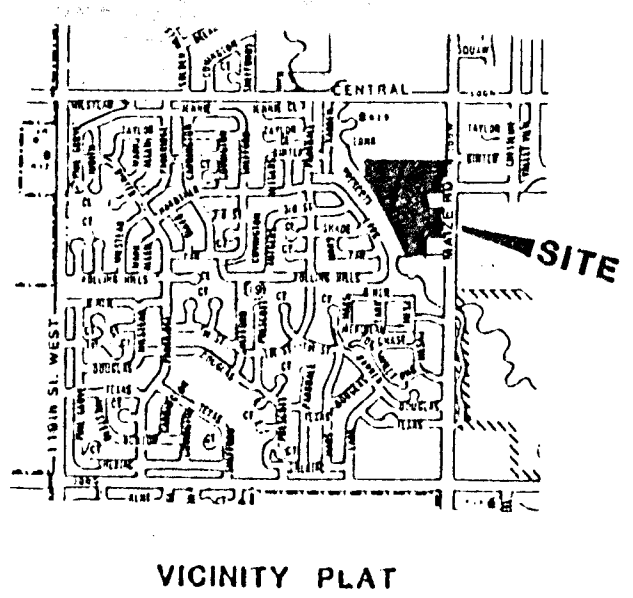


1221

N
 (ASSUMED AZIMUTH)
 TOPOGRAPHIC MAP OF LANDS LOCATED AT
 S. HALF OF NE. QUARTER SECTION 19, T27S, R1W,
 SEDGWICK COUNTY, KANSAS
 SURVEYING & ENGINEERING
 ARMSTRONG LAND SURVEY, P.A.
 1021 E. WATERMAN, WICHITA, KS 67211
 0 100 200 300
 1:1200
 CONTOUR INTERVAL: 2' @ 100'-1"
 PHOTOGRAMMERY BY
 MILES AIR PHOTO SURVEY
 100 THOUSAND SHEET
 MANHATTAN, KANSAS 66502
 AERIAL PHOTOGRAPHY
 BYE VERTICAL AIR PHOTO
 ALTITUDE 2400-4300 FT.
 DATE 5/14/1970



21°
 Westlink Interceptor
 Buled 5/14/1970

PRELIMINARY PLAT
PARK WEST PLAZA

TRACT IN THE NE 1/4 OF SEC 19, TWP 27-S, R-1-W
 OF THE 6TH P.M., SEDGWICK COUNTY, KANSAS.

JAY W RUSSELL
 RIVERSIDE HEALTH SERVICES, INC

BAUGHMAN COMPANY, P.A.
 SURVEYING & ENGINEERING
 316/282-7271 • 315 ELLIS • WICHITA, KANSAS 67211

2 JUN 89