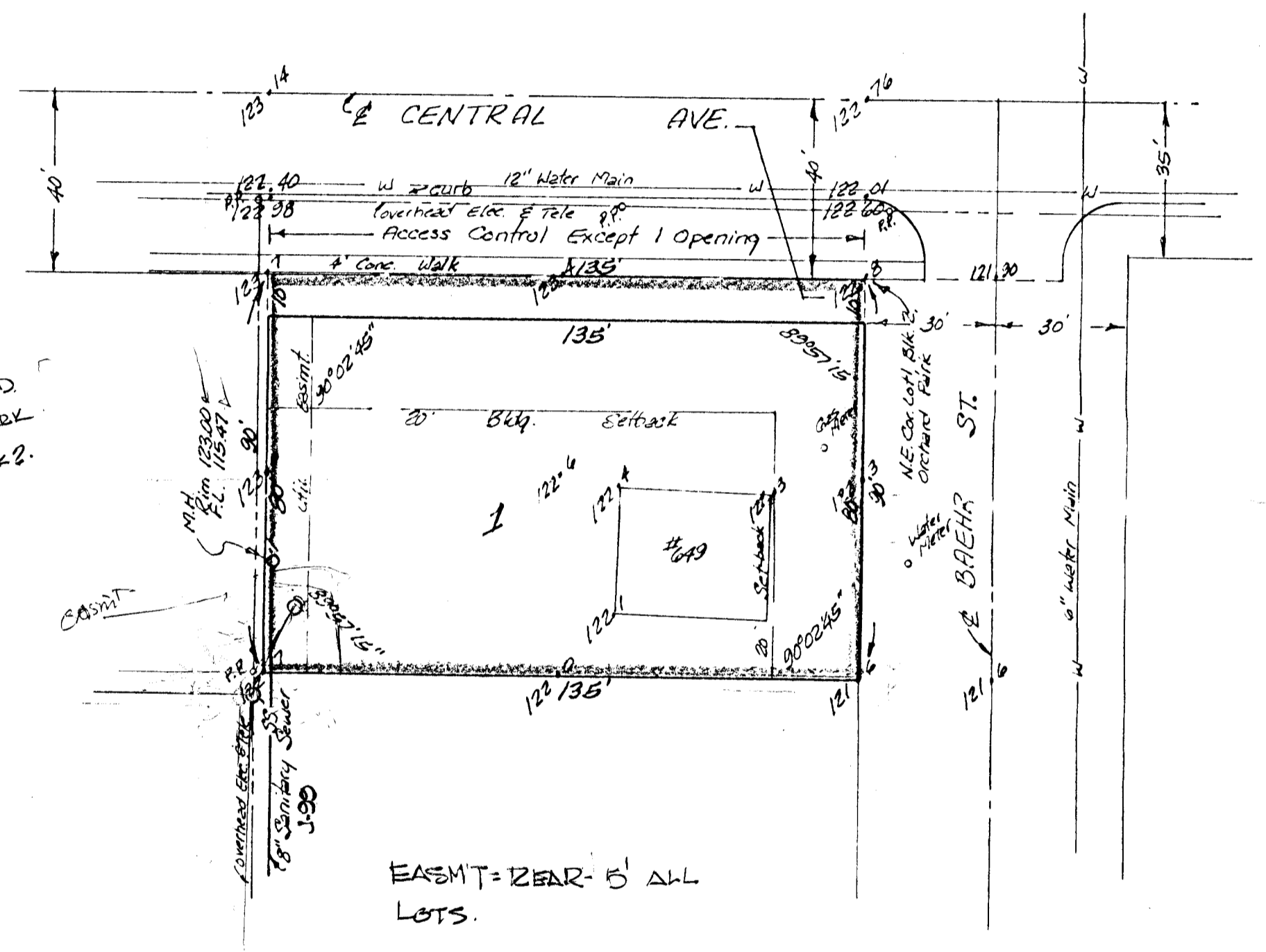


1" = 30'
 ELEV. = CITY DATUM
 BENCH MARK:
 City Standard Disc. 34" N. & 42" W.
 at E. Anna and Central
 Elev. = 124.519 City Datum

1/2" = 7'-4 1/2"
 29-2-10
 1/2" = 7'-4 1/2"



EASMT = 12' EAR - 5' ALL LOTS.

SKETCH PLAT
D. J. FISHER ADDITION

LOTS 1 AND 2, BLOCK 2, ORCHARD PARK,
 SEDGWICK COUNTY, KANSAS.

DANIEL J. FISHER