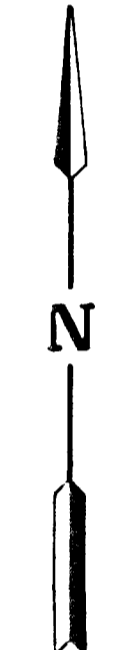
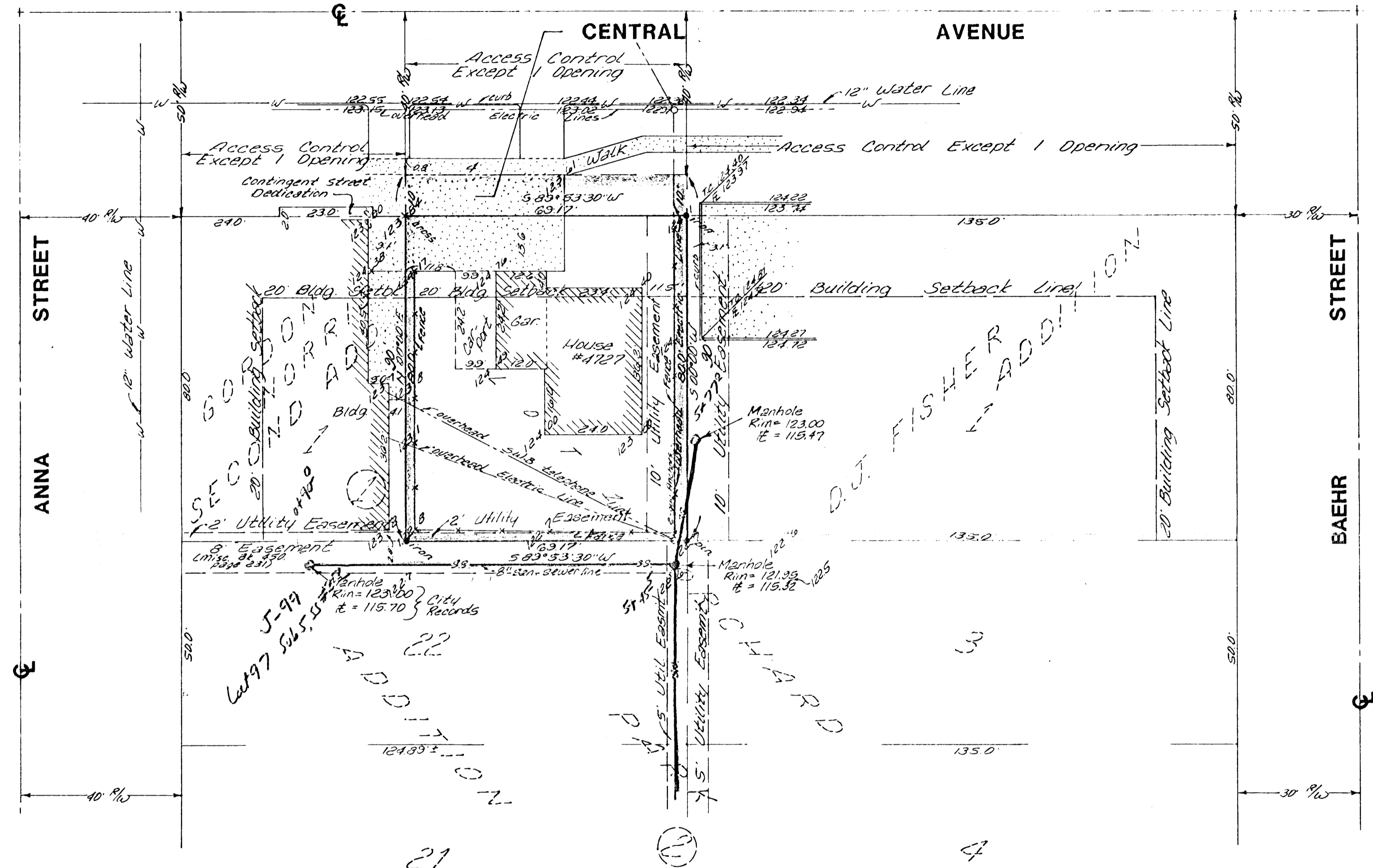


599



Scale 1"=20'
 Bench Mark:
 City Standard Disc. 34' N
 & 42' W of E. Anna and
 Central. Elev. = 124.519
 City Datum

SKETCH PLAT

D. J. FISHER 2ND ADDITION

REPLAT OF THE EAST 69.17 FEET OF LOTS 23 AND 24, BLOCK 2,
 ORCHARD PARK ADDITION, WICHITA, SEDGWICK COUNTY, KANSAS.

OWNERS: GERY M. AND JACQUE C. FISHER