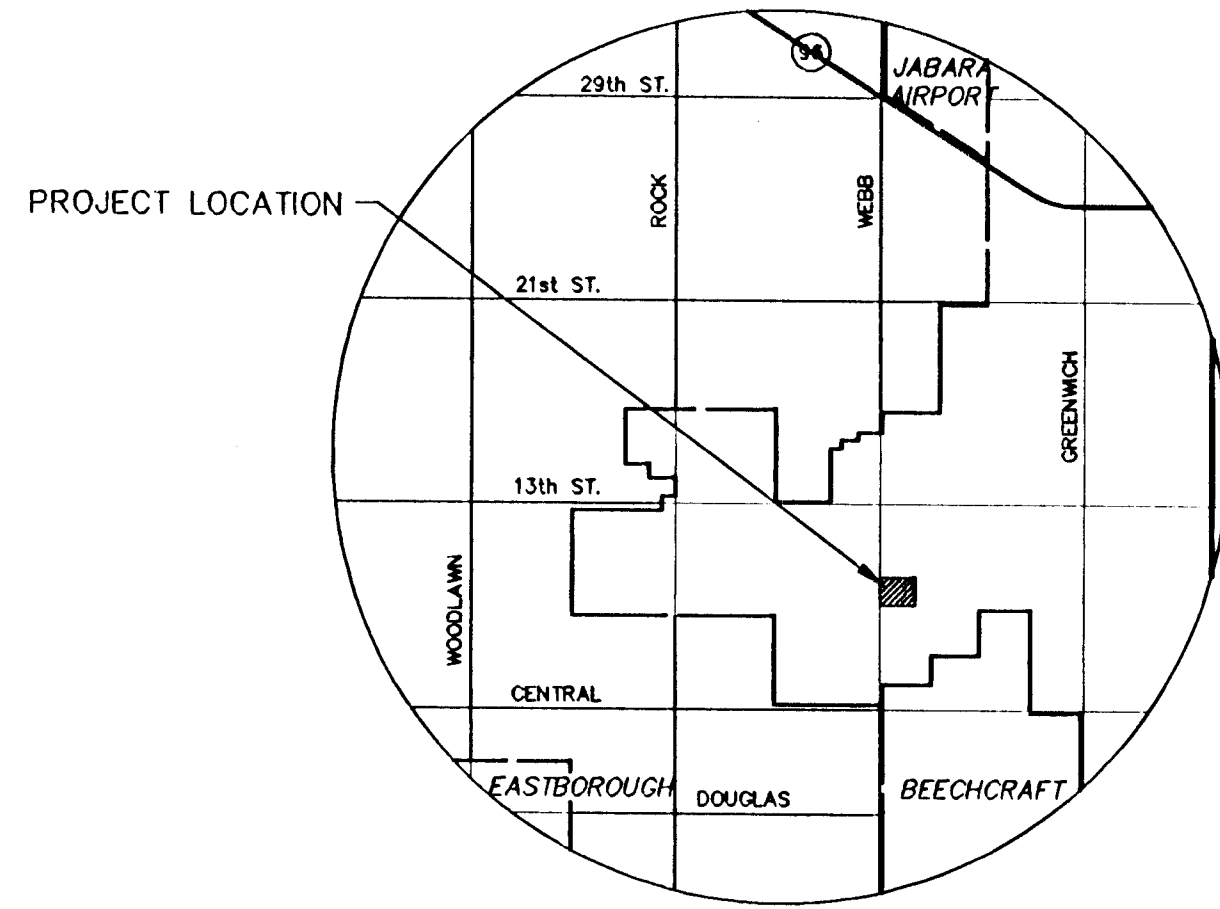
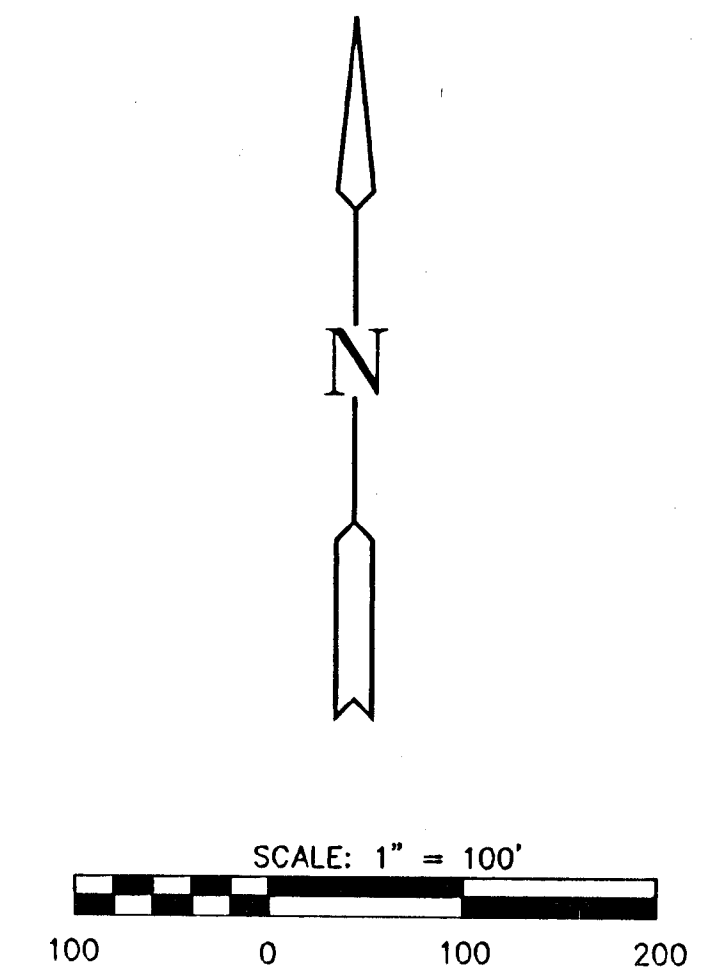
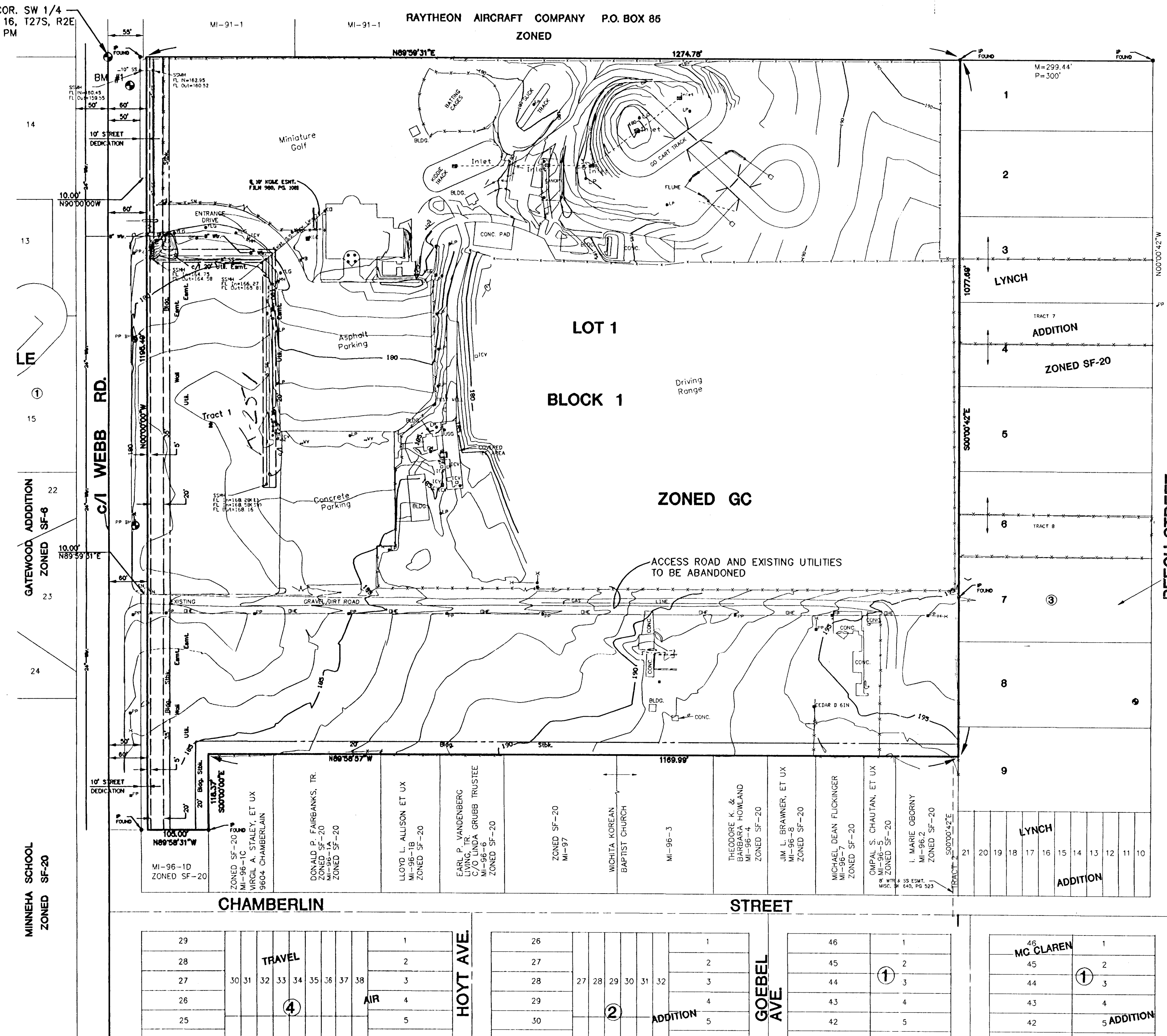


SW COR. SW 1/4
SEC. 16, T27S, R2E
6TH. PM



LEGEND

- MB MANHOLE
- BIN DECIDUOUS TREE
- EBIN EVERGREEN TREE
- KGE KG&E ELECTRIC BOX
- MH MANHOLE
- IP IRON PIPE
- SPK SPRINKLER
- ICV IRRIGATION CONTROL VALVE
- WV WATER VALVE
- FH FIRE HYDRANT
- SN SIGN
- BM BENCH MARK
- SSMH SANITARY SEWER MANHOLE
- GM GAS METER
- PP POWER POLE W/DEADMAN
- TP TELEPHONE POLE
- TR TELEPHONE RISER
- STUMP TREE STUMP
- YLG YARD LIGHT
- CD CLEANOUT
- FENCE
- HEDGE ROW

BENCH MARK

BM# 1 WEBB ROAD AND 9TH. STREET NORTH CITY OF WICHITA
BENCH MARK DISK, 34' EAST AND 44' SOUTH OF
QUARTER SECTION CORNER.
ELEV. = 172.96

PRELIMINARY PLAT FAMILY GOLF CENTER ADDITION

AN ADDITION TO WICHITA SEDGWICK COUNTY, KANSAS
OWNER - BLUE EAGLE OF KANSAS, INC.
638 BROADHOLLON ROAD
MELVILLE, NY 11747

MARCH, 1998

MID-KANSAS ENGINEERING
CONSULTANTS, INC.
411 N. WEBB ROAD
WICHITA, KS. 67206
316-684-9600

G:\CIVIL\98100\PROJ\PREL\PLAT\98100PRE.DWG