

SKETCH PLAT

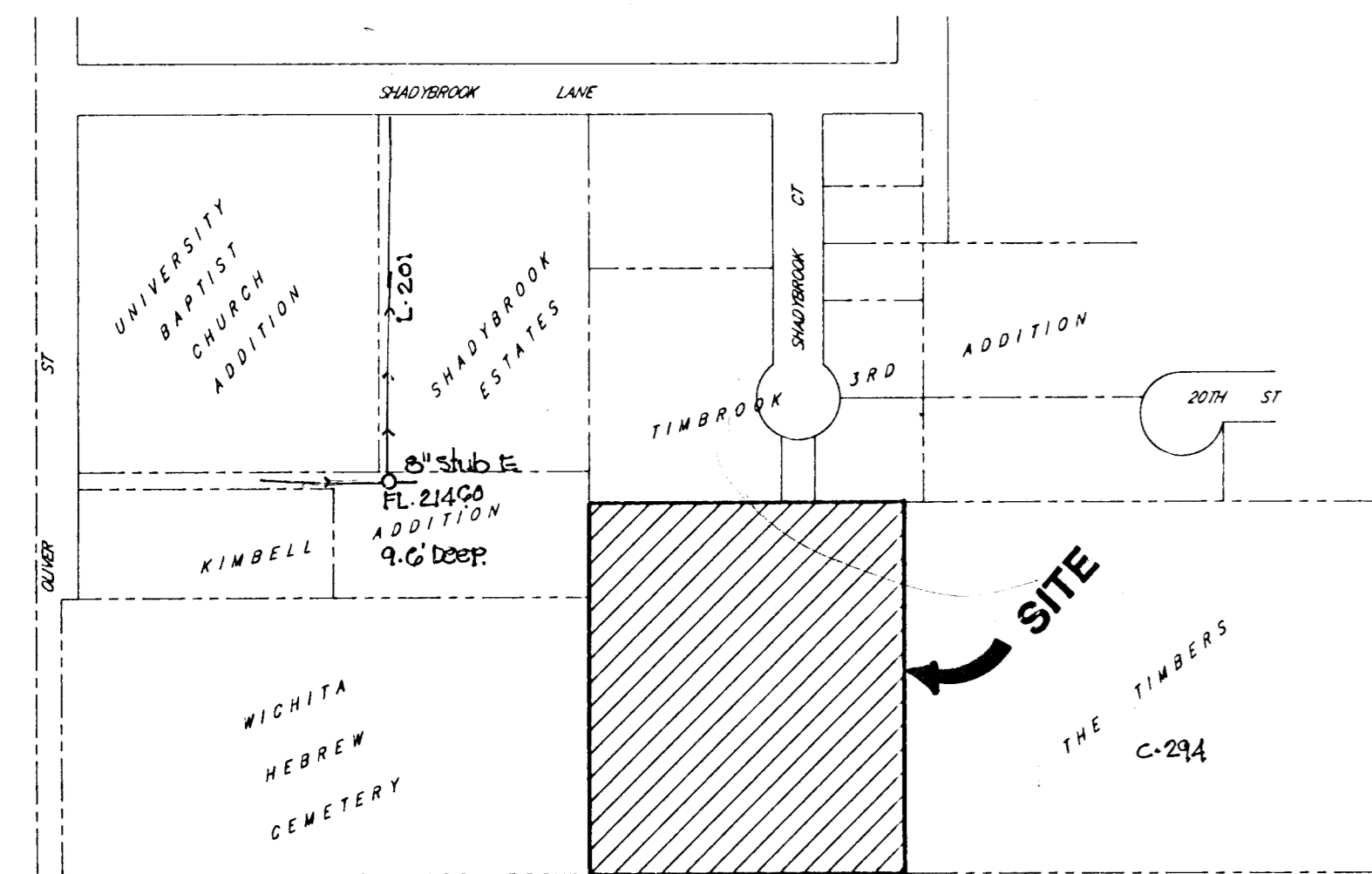
TIMBER CHAPEL ADDITION

WICHITA, SEDGWICK COUNTY, KANSAS.

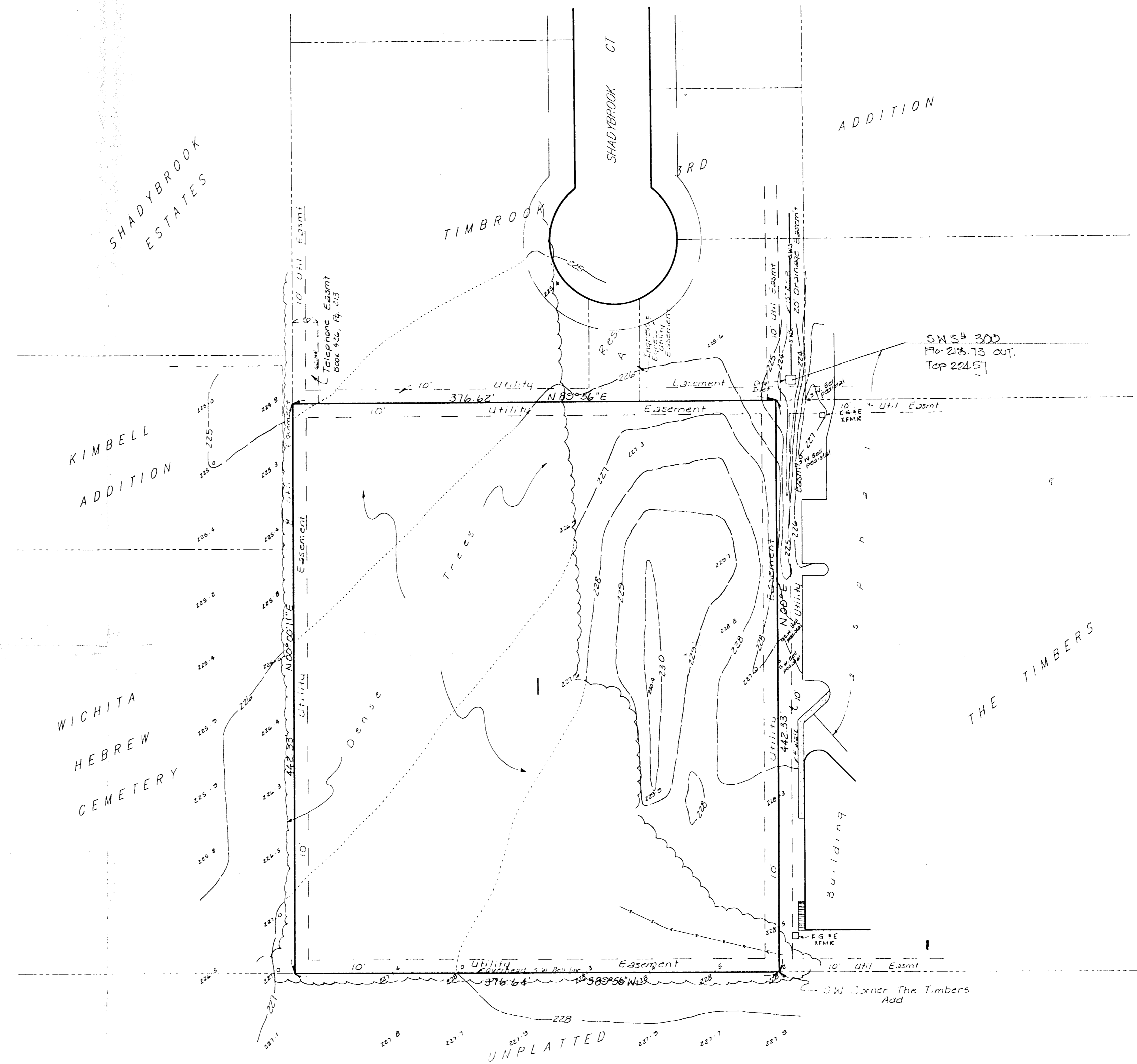
Tract in the NW1/4 of Sec. 12, Twp. 27-S, R-1-E of the 6th P.M.
Sedgwick County, Kansas.



Bench Mark
Disc stamped 239, 1934 36.72et
south and 32.12et west of the
centerlines of Oliver E 17th St &
2' south of R.R. Signal light
Elev = 221.08 City Datum



VICINITY MAP



BAUGHMAN COMPANY P. A.
SURVEYING & ENGINEERING
316/262-7271 • 315 ELLIS • WICHITA, KANSAS 67211

May 4, 1990