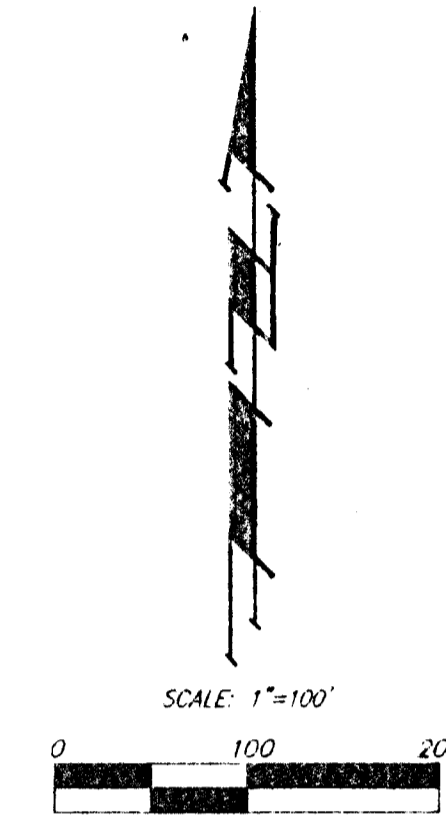
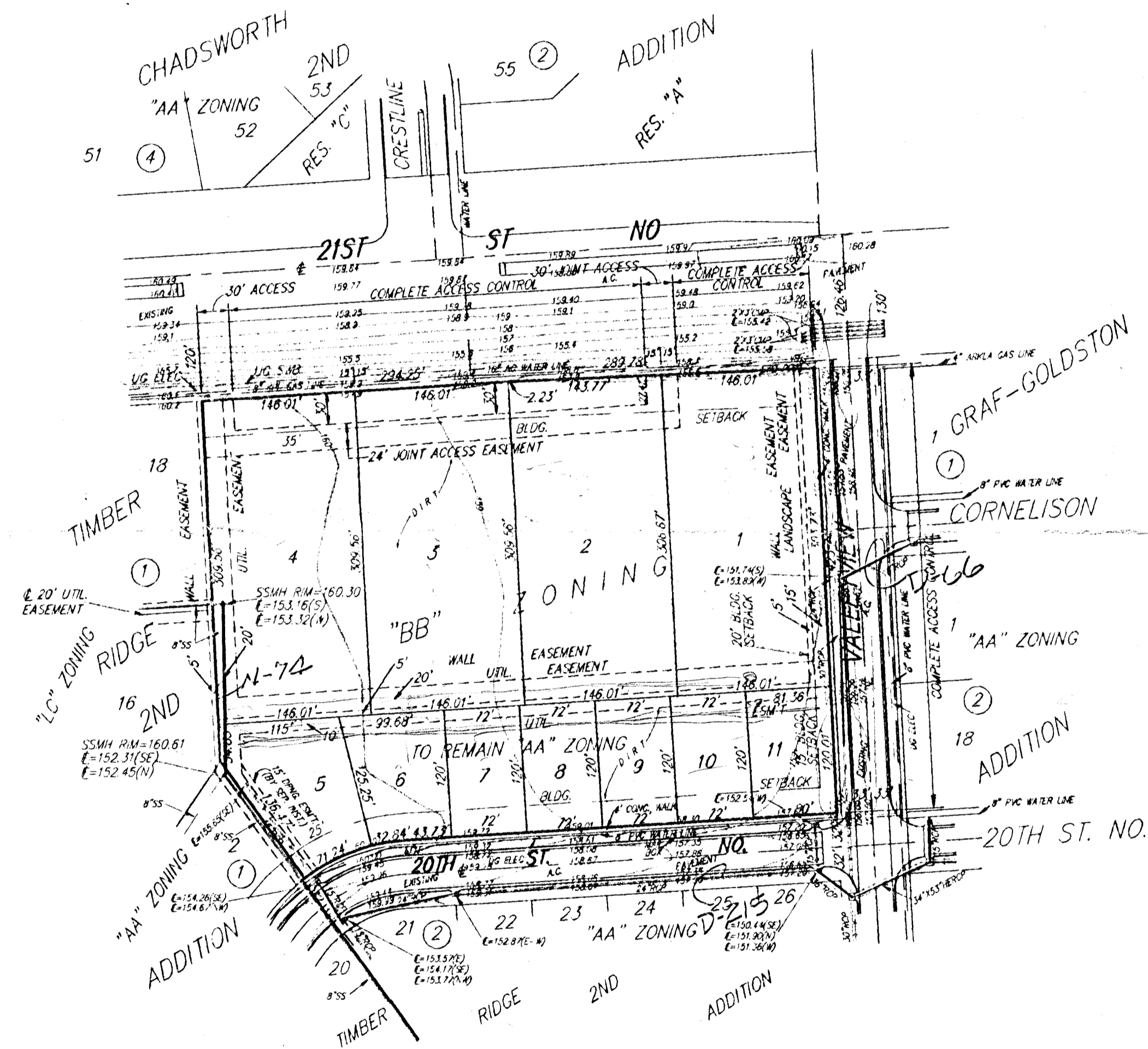


PRELIMINARY PLAT  
**TIMBER RIDGE 3RD ADDITION**  
 WICHITA, SEDGWICK COUNTY, KANSAS

MAIZE RD.

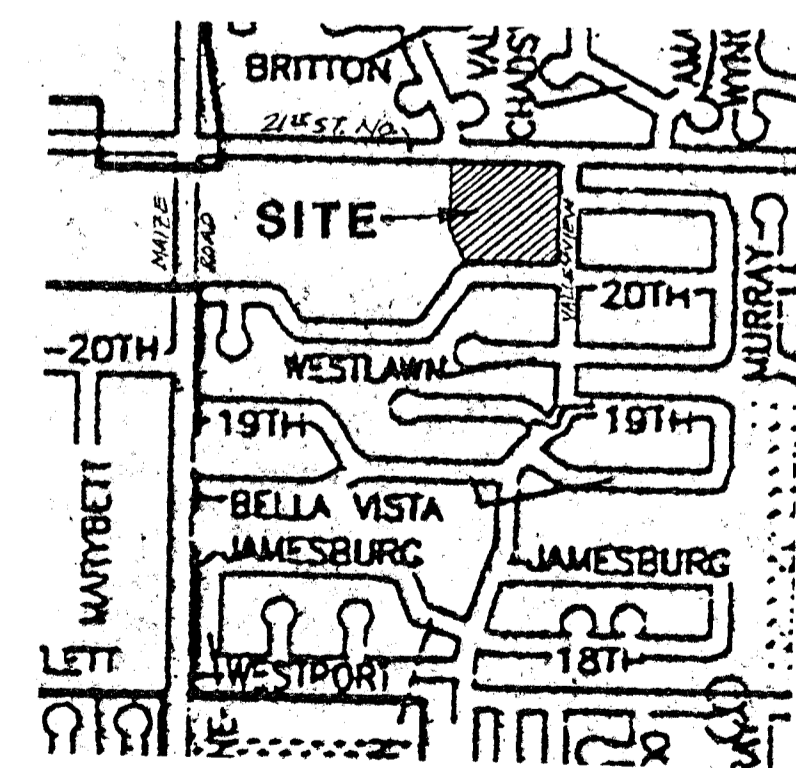


CONTOUR INTERVAL = 1'

OWNER:  
 B. & E. INVESTMENTS  
 ATTN: MATT ECK  
 5512 W. CENTRAL  
 WICHITA, KS 67212  
 PH# 316-942-7402

LEGAL DESCRIPTION:  
 A REPLAT OF LOT 1, BLOCK 1, TIMBER RIDGE 2ND ADDITION,  
 WICHITA, SEDGWICK COUNTY, KANSAS.

BENCHMARK:  
 "EJ" CUT, TOP OF CURB, 14.5' E. & 15' S. OF THE  
 NE CORNER OF LOT 1, BLOCK 1, TIMBER RIDGE 2ND  
 ADDITION, WICHITA, SEDGWICK COUNTY, KANSAS.  
 ELEV. = 159.26 CITY DATUM



VICINITY MAP