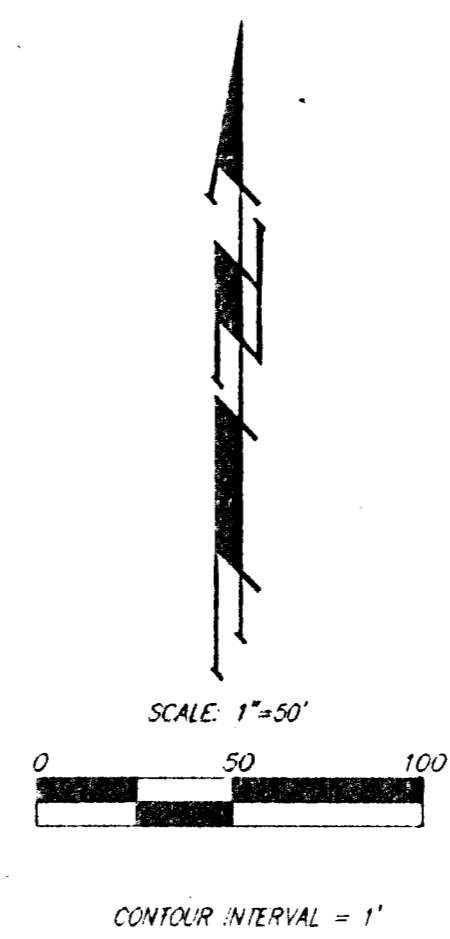
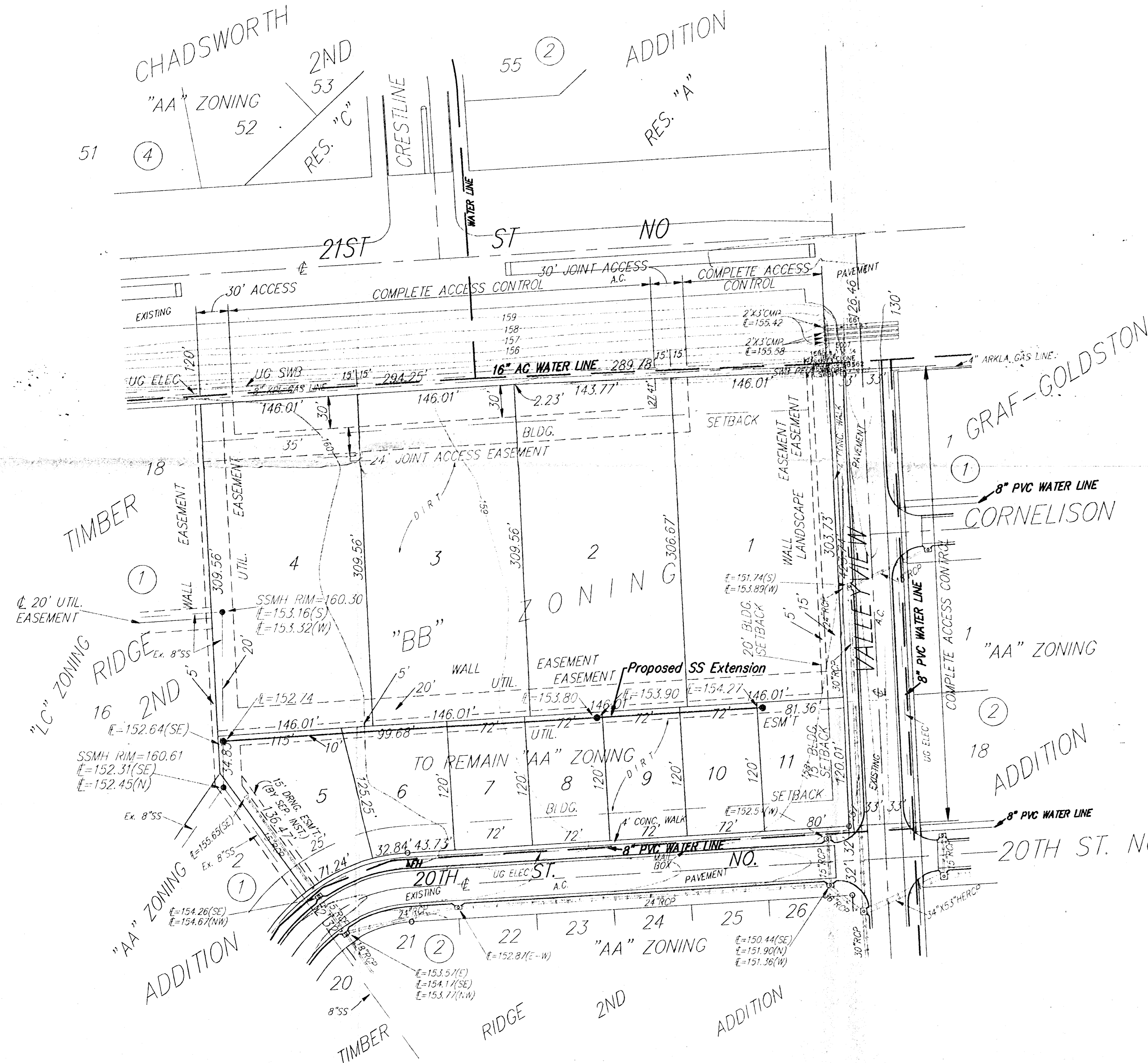


UTILITY CONCEPT
TIMBER RIDGE 3RD ADDITION
 WICHITA, SEDGWICK COUNTY, KANSAS



OWNER:
 B. & E. INVESTMENTS
 ATTN: MATT ECK
 5512 W. CENTRAL
 WICHITA, KS 67212
 PH# 316-942-7402

LEGAL DESCRIPTION:
 A REPLAT OF LOT 1, BLOCK 1, TIMBER RIDGE 2ND ADDITION,
 WICHITA, SEDGWICK COUNTY, KANSAS.

BENCHMARK:
 "□" CUT, TOP OF CURB, 14.5' E. & 15' S. OF THE
 NE. CORNER OF LOT 1, BLOCK 1, TIMBER RIDGE 2ND
 ADDITION, WICHITA, SEDGWICK COUNTY, KANSAS.
 ELEV. = 159.26 CITY DATUM

VICINITY MAP