

DRAINAGE PLAN

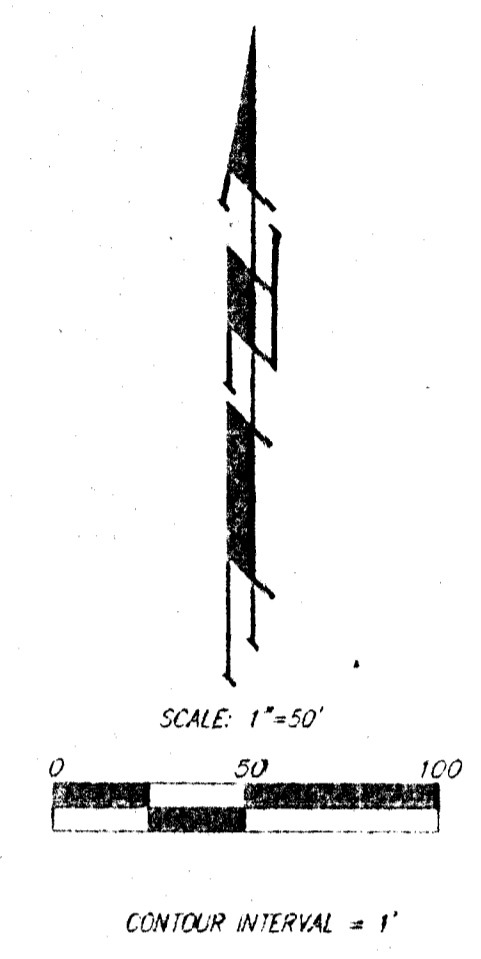
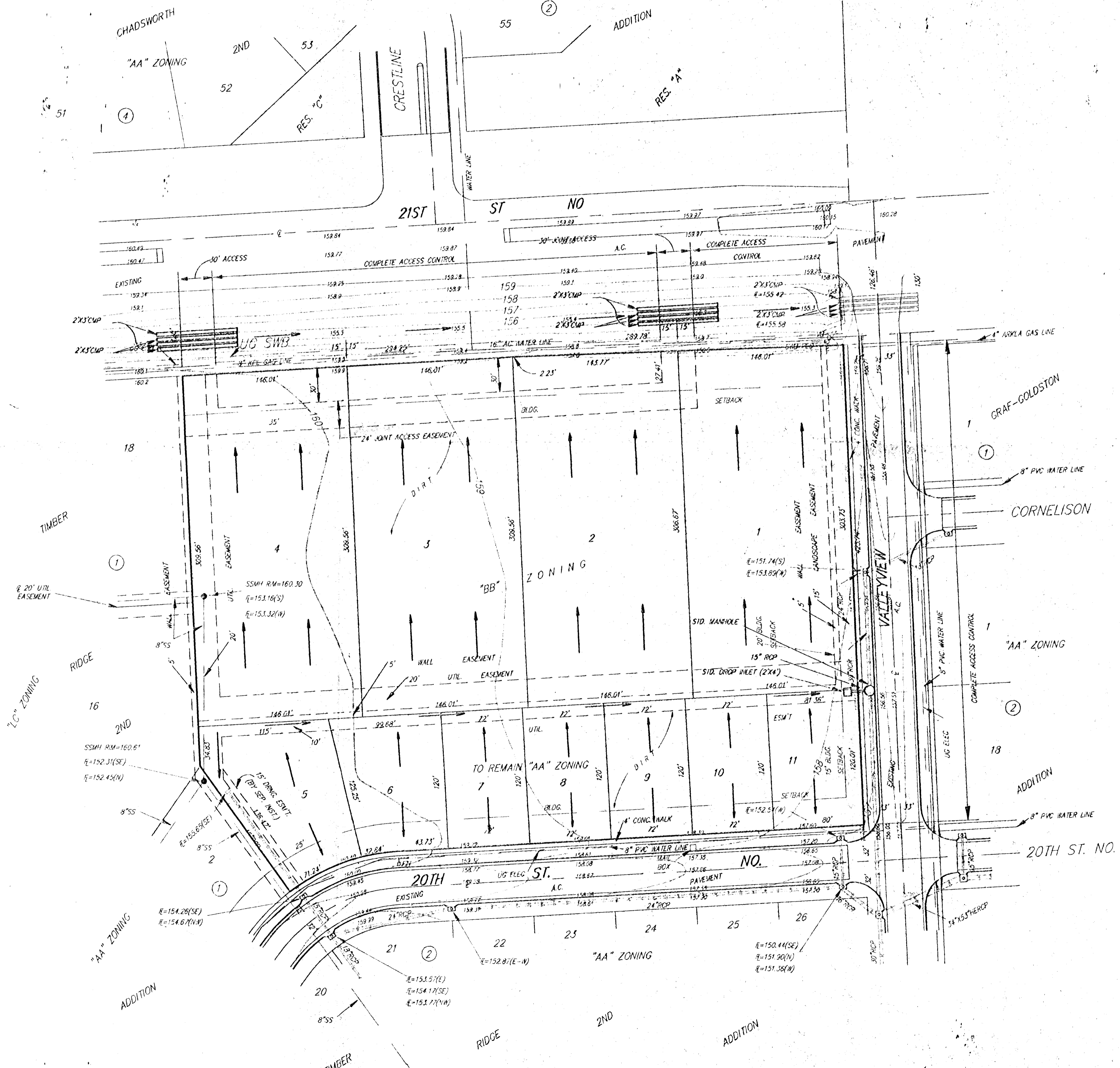
TIMBER RIDGE 3RD ADDITION

WICHITA, SEDGWICK COUNTY, KANSAS

Drainage Data

Lot	Area (acres)	C ₂	C ₁₀₀	T _c (min.)	I ₂ (in/hr)	I ₁₀₀ (in/hr)	Q ₂ (cfs)	Q ₁₀₀ (cfs)
1	1.02	0.69	0.80	15	4.56	7.57	3.2	6.0
2	1.02	0.69	0.80	15	4.56	7.57	3.2	6.0
3	1.04	0.69	0.80	15	4.56	7.57	3.3	6.1
4	1.04	0.69	0.80	15	4.56	7.57	3.3	6.1
5	0.25	0.44	0.61	15	3.83	7.57	0.4	1.1
6	0.20	0.44	0.61	15	3.83	7.57	0.3	0.9
7	0.20	0.44	0.61	15	3.83	7.57	0.3	0.9
8	0.20	0.44	0.61	15	3.83	7.57	0.3	0.9
9	0.20	0.44	0.61	15	3.83	7.57	0.3	0.9
10	0.20	0.44	0.61	15	3.83	7.57	0.3	0.9
11	0.22	0.44	0.61	15	3.83	7.57	0.4	1.0

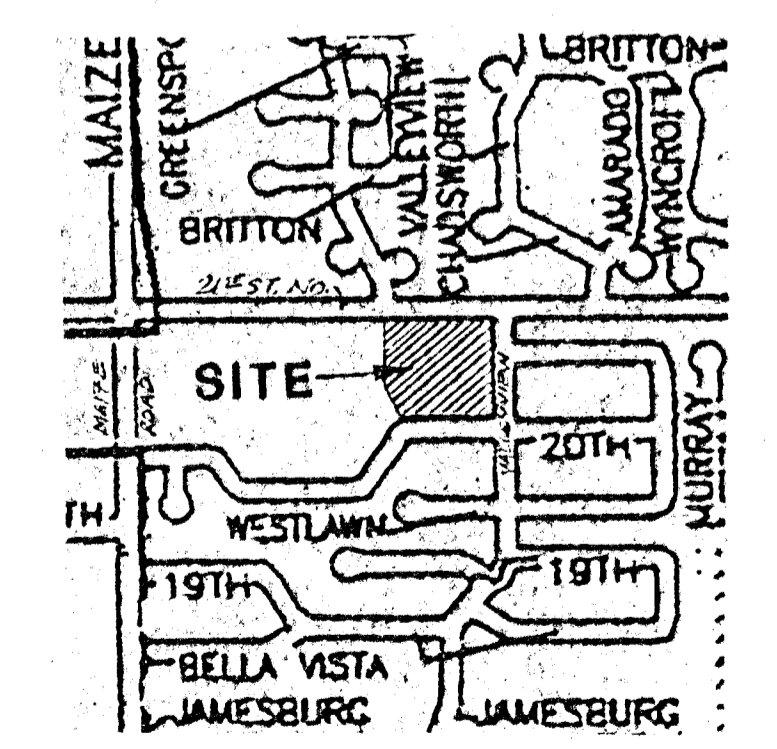
NOTE: The proposed drainage plan provided herein is a generally defined plan to follow for design. It is recognized and assumed that upon the final design of street and storm sewer improvements within this plat that the designer will modify or alter the general drainage plan as necessary in order to implement the installation of the improvements to obtain the most economical design and construction possible.



OWNER:
B. & E. INVESTMENTS
ATTN: MATT ECK
5512 W. CENTRAL
WICHITA, KS 67212
PH# 316-942-7402

LEGAL DESCRIPTION:
A REPLAT OF LOT 1, BLOCK 1, TIMBER RIDGE 2ND ADDITION,
WICHITA, SEDGWICK COUNTY, KANSAS.

BENCHMARK:
"I" CUT, TOP OF CURB, 14.5' E. & 15' S. OF THE
NE CORNER OF LOT 1, BLOCK 1, TIMBER RIDGE 2ND
ADDITION, WICHITA, SEDGWICK COUNTY, KANSAS.
ELEV. = 159.26 CITY DATUM



VICINITY MAP