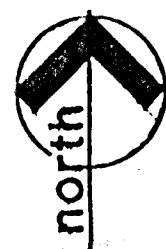
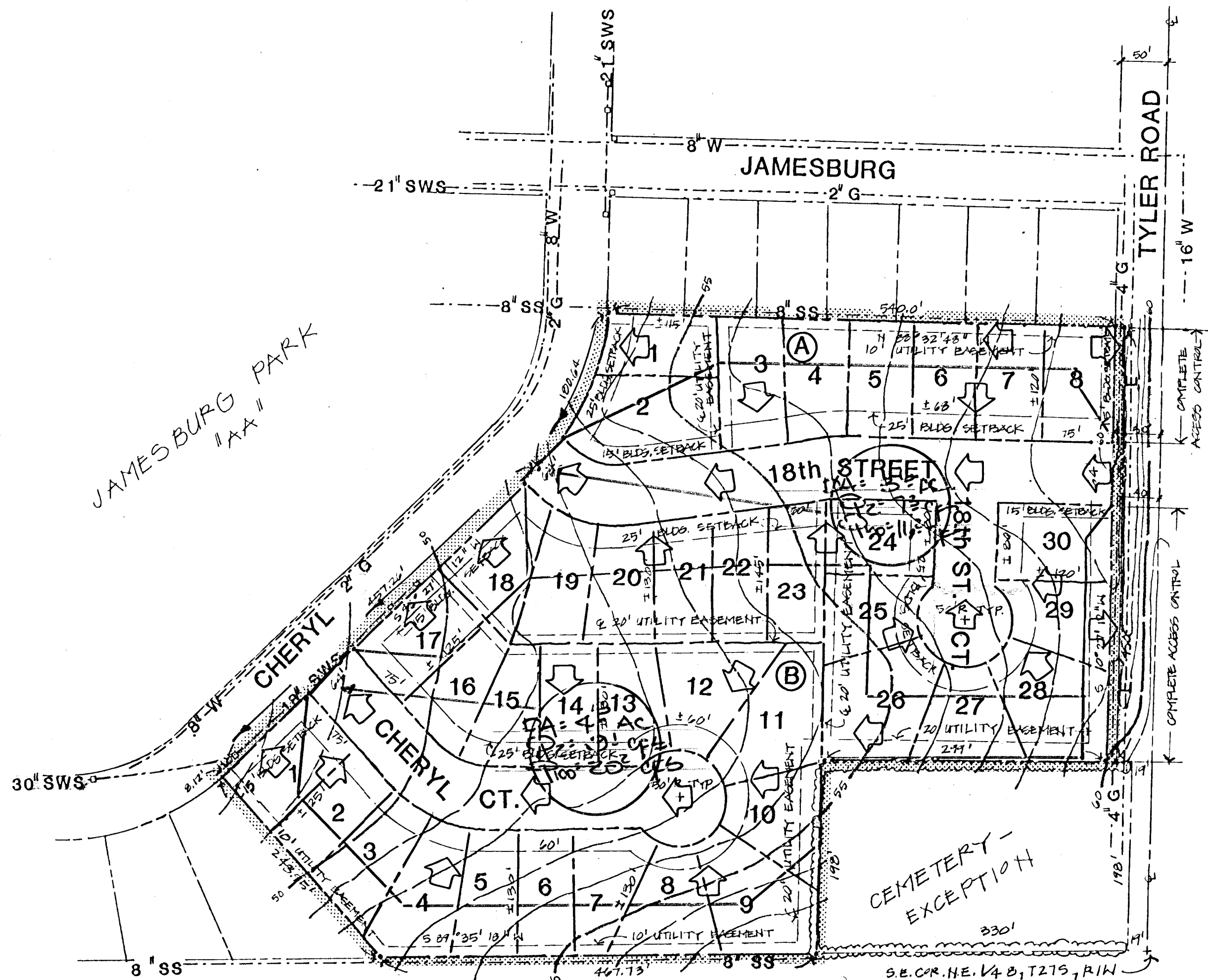


SITE LOCATION MAP

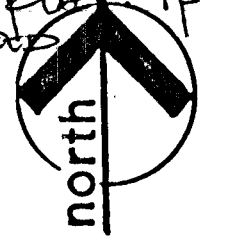
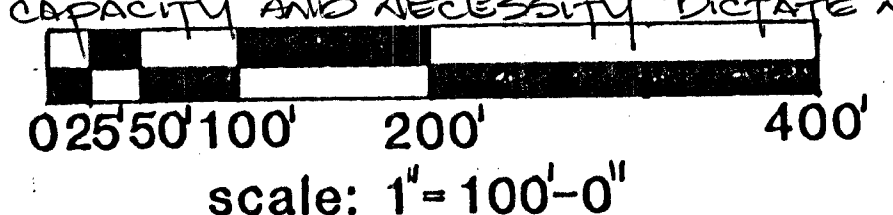


TOPOGRAPHY: ONE FOOT CONTOURS, MEHRING ASSOC.  
 LOCATION: S.E. COR. N.E. 1/4 OF SEC. 8, T 27 S, R 14 W



WESTLINK VILLAGE  
 ELEVENTH ADDITION  
 "AX"

NOTE: RESIDENTIAL AREAS WILL HAVE A RUNOFF FACTOR OF 0.50 FOR THIS ADDITION. EXISTING STORM SEWERS ARE INDICATED IN CHERYL. AREAS OF DISCHARGE AND DIRECTIONS OF GENERAL FLOW ARE INDICATED. STORM SEWER EXTENSIONS WILL BE CONSIDERED FOR THE FINAL PLAT IF CAPACITY AND NECESSITY DICTATE NOT.



REVISED  
**PRELIMINARY PLAT**

DRAINAGE CONCEPT

**POS**  
 INCORPORATED  
 PLANNING DEVELOPMENT SERVICES, INC.  
 P.O. Box 777, Wichita, Kansas 67209  
 Phone: 316-262-0451, Telex: 417-375 PDS WIC  
 Wichita, KS 67209

**JAMESBURG PARK 2ND ADDITION**  
 Wichita, Sedgwick County, Kansas  
 Owner: Faith Christian Church - Wichita, Kansas  
 Subdivider: Tyler Associates II - Wichita, Kansas

Waldo  
 JUNE 1984