

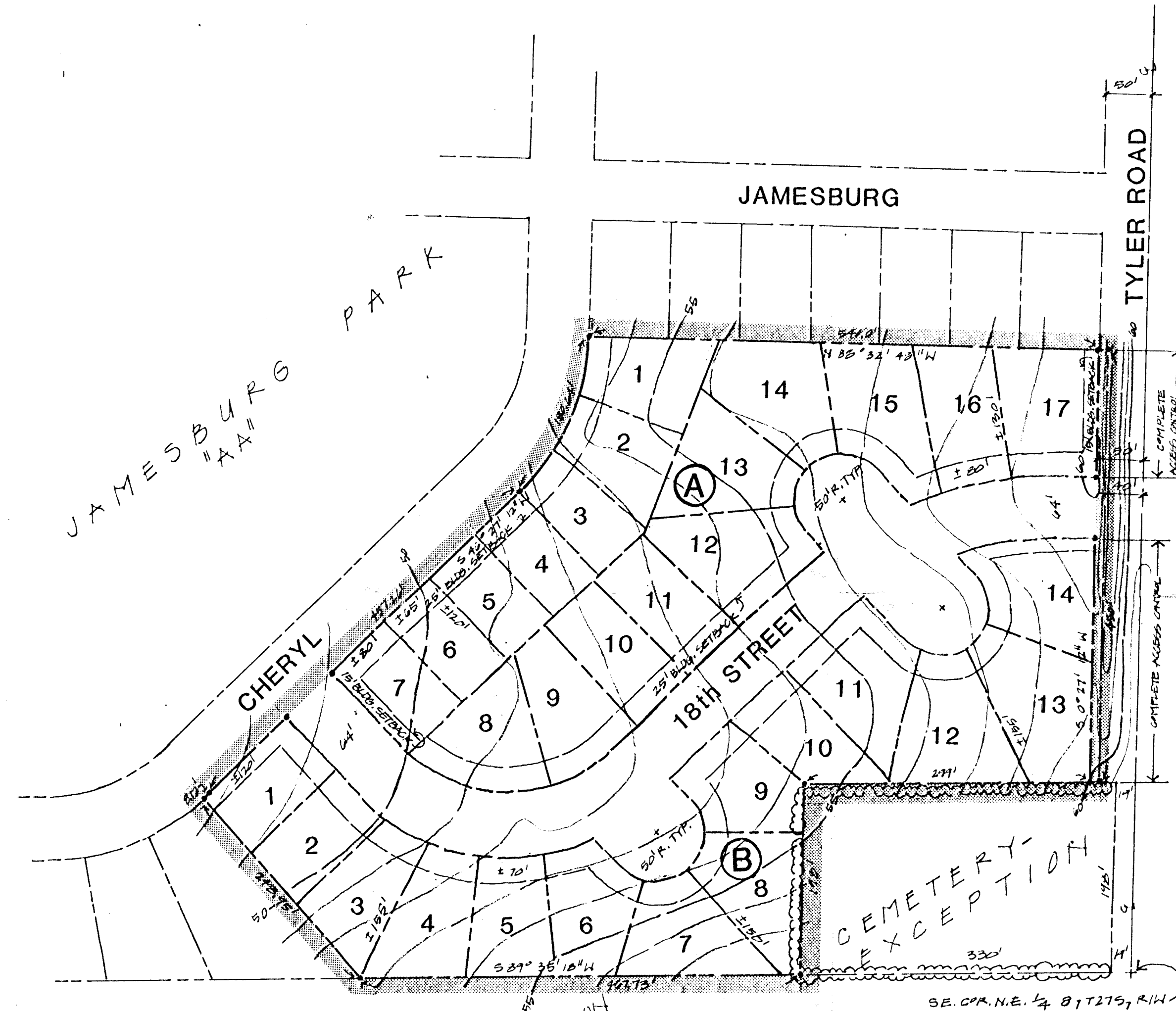
SITE LOCATION MAP



TOPOGRAPHY: ONE FT. CONTOURS, MOHRING & ASSOC.
 LOCATION: SE. COR. NE. 1/4 UP SEC. 8, T27S, R1W

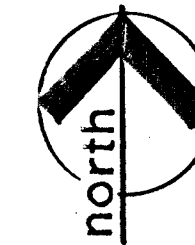
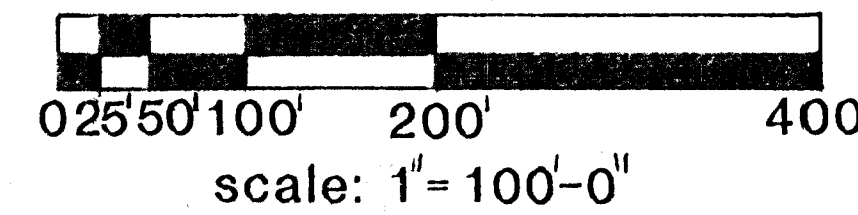
PROPOSED ZONING

- "AA" One - Family Dwelling
 Lots 1-7, Blk. A and Lot 1, Blk. B
- "A" Two - Family Dwelling
 Lots 8-11, Blk. A and Lots 2-10, Blk. B
- "RB" Four - Family Dwelling
 Lots 12-17, Blk. A and Lots 11-14, Blk. B



WESTLINK VILLAGE
 ELEVENTH ADDITION
 "AA"

SKETCH PLAT



PPDS
 INCORPORATED
 PLANNING DEVELOPMENT SERVICES, INC.
 River Park Place, Suite 123
 727 North Maco
 Wichita, KS 67203 316-262-0451 Telex 417-375 PDS-WIC

JAMESBURG PARK 2ND ADDITION
 Wichita, Sedgwick County, Kansas
 Owner: Faith Christian Church - Wichita, Kansas
 Subdivider: Tyler Associates II - Wichita, Kansas

WALDO
 JAN. 1984