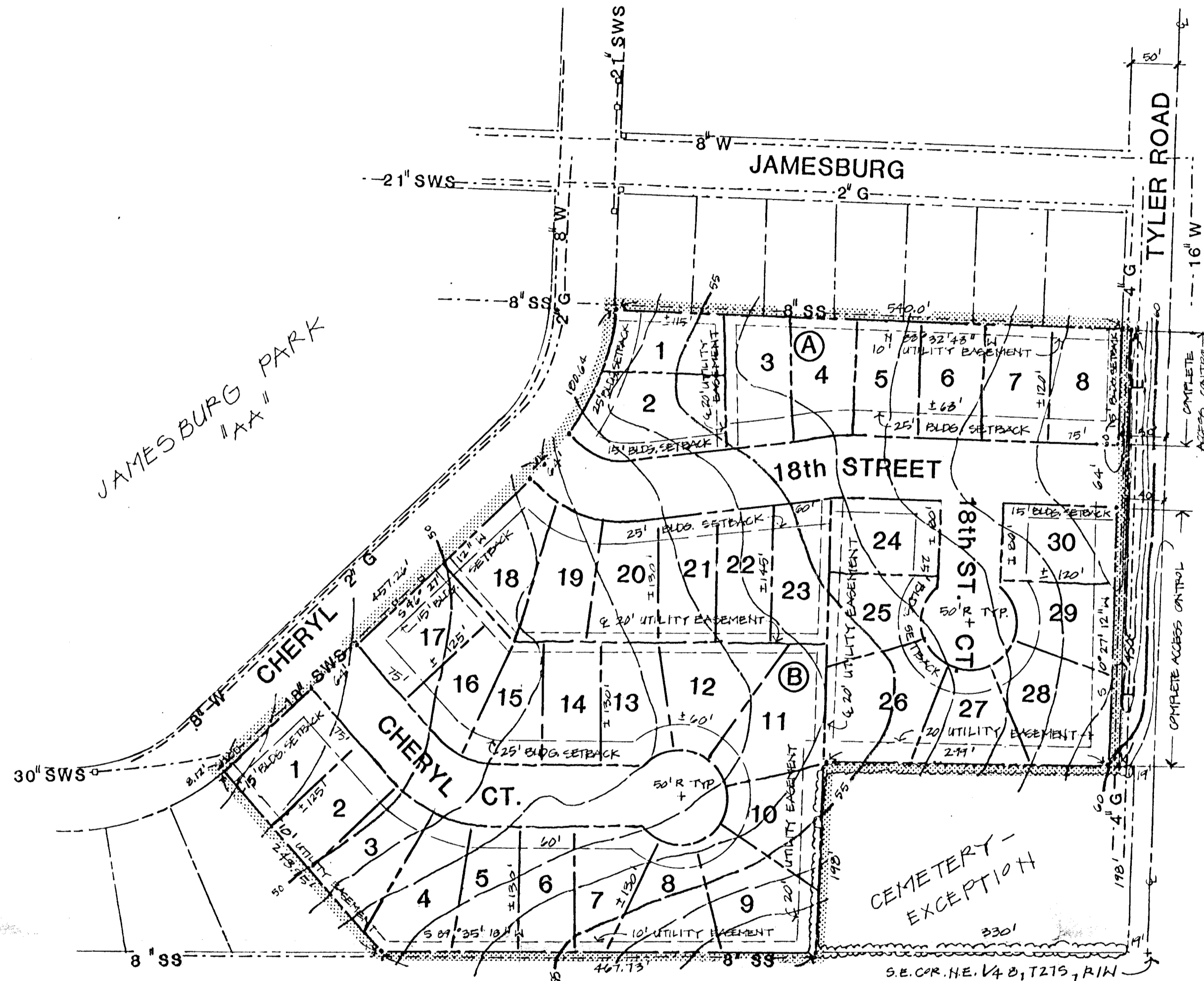


SITE LOCATION MAP

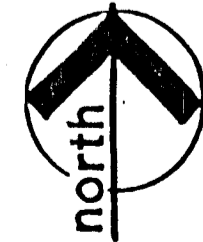
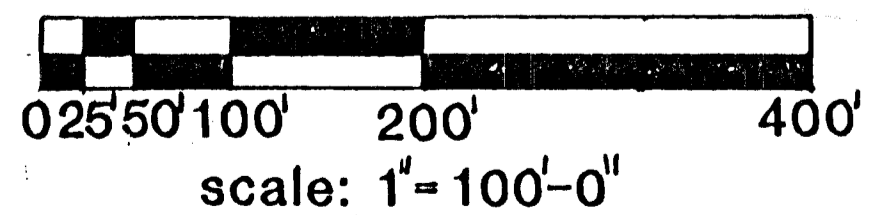


TOPOGRAPHY: ONE FOOT CONTOURS, MOHRING ASSOC.
 LOCATION: S.E. COR. N.E. 1/4 OF SEC. 8, T 27 S, R 1 W



REVISED

PRELIMINARY PLAT



WESTLINK VILLAGE
 ELEVENTH ADDITION
 "AA"

JAMESBURG PARK
 "AA"

PDS
 INCORPORATED
 PLANNING DEVELOPMENT SERVICES, INC.
 River Park, Place 177 North Waco, Suite 125
 Wichita, KS 67203 316-262-0451 Telex 417-375 PDS WIC

JAMESBURG PARK 2ND ADDITION
 Wichita, Sedgwick County, Kansas
 Owner: Faith Christian Church - Wichita, Kansas
 Subdivider: Tyler Associates I - Wichita, Kansas

Waldo
 JUNE 1984