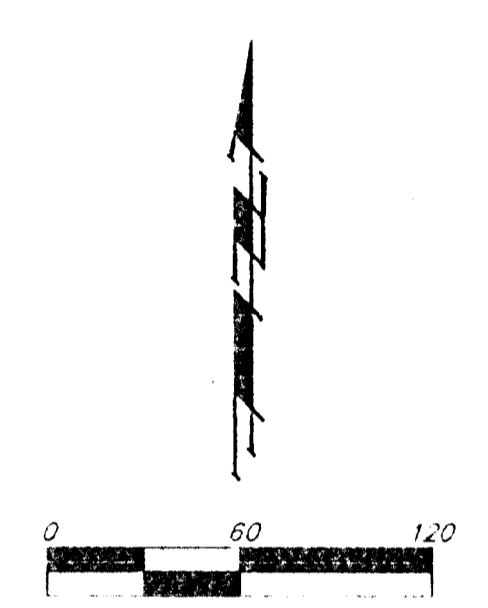
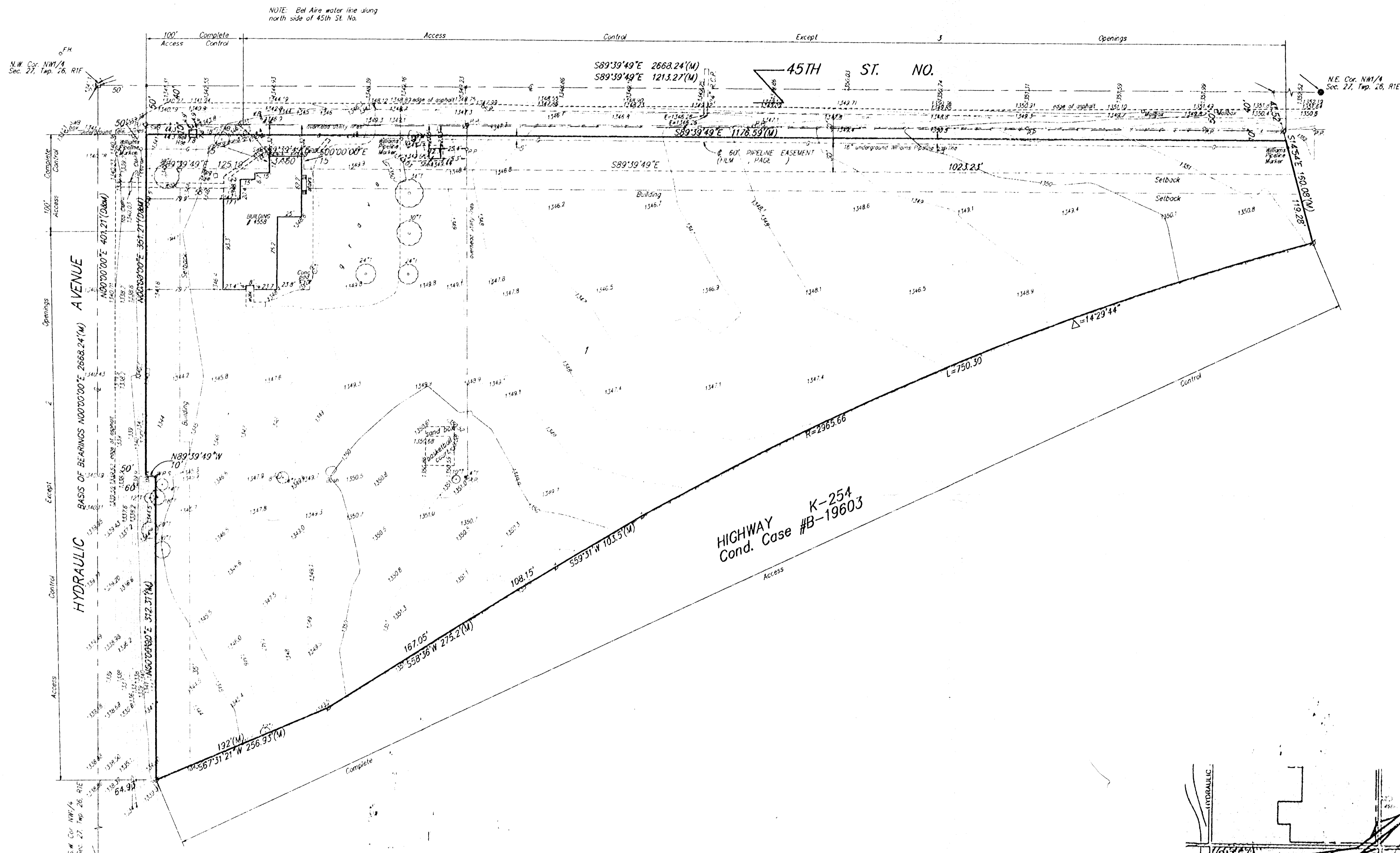


SKETCH PLAT
THREE ANGELS ADDITION
 SEDGWICK COUNTY, KANSAS



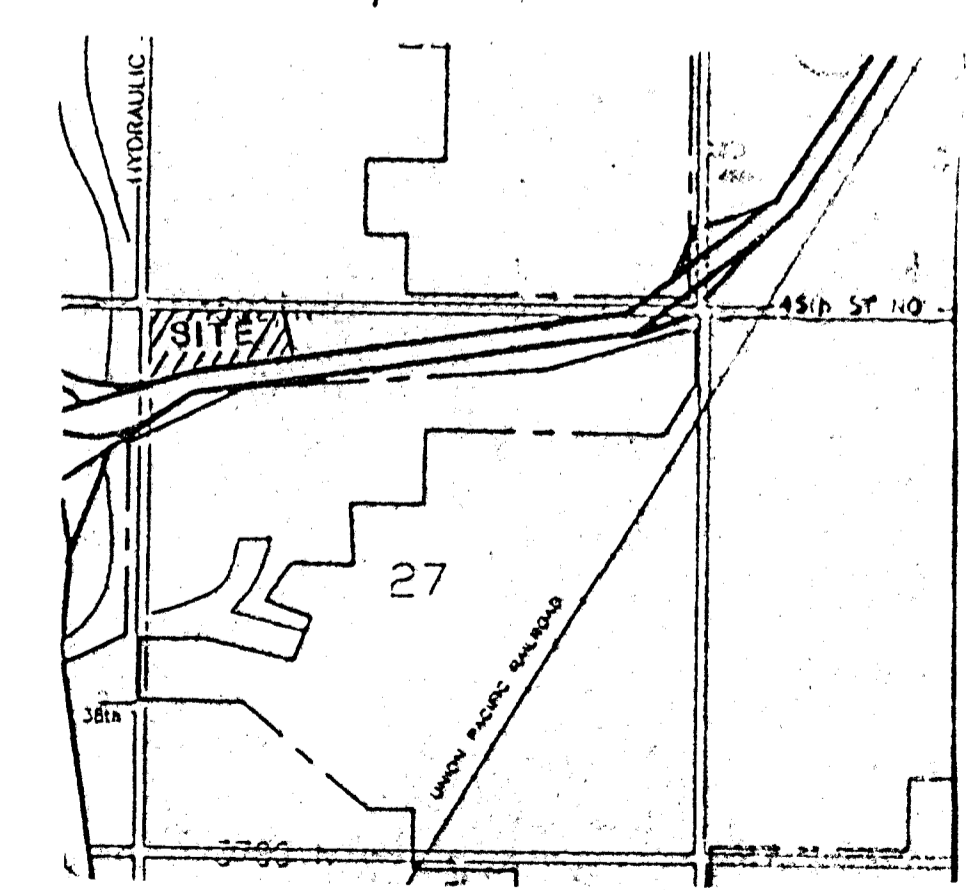
- LEGEND**
- = Rebar Found
 - = 3/4" Iron found
 - ▲ = Thimble Found
 - = 1/2" Iron Found
 - ⊕ = 1/2" Boughtman Rebar Set
 - × = P.K. Nail Set
 - P.P. = Power Pole
 - G.M. = Gas Meter
 - W.M. = Water Meter
 - V.B. = Valve Box
 - W.P.S. = Wichita Public Schools Independent Phone Line (Buried Cable Marker)
 - SWB box = Southwestern Bell Box
 - Gas Mkr = underground Gas marker

NOTE: Blanket Cities Service Gas Company Pipeline Easements (now Williams Natural Gas) per Misc. Book 236, Page 215, Misc. Book 236, Page 121, & Misc. Book 521, Page 22.

BENCH MARK
 City of Wichita Disc on east end of hubguard 200' E. of the N.W. corner of said NW1/4 Elev= 1340.72 M.S.L.

OWNER
 Kansas-Nebraska Association of Seventh Day Adventists, Inc.
 Attn: Luminita Mackintosh
 4559 N. Hydraulic
 Wichita Kansas, 67219
 (316) 832-1010

LEGAL
 That part of the NW1/4 of Sec. 27, Twp. 26-S, R-1-E of the 6th P.M. Sedgwick County, Kansas, lying North and West of the Highway right-of-way as condemned in District Court Case #B19603



VICINITY MAP