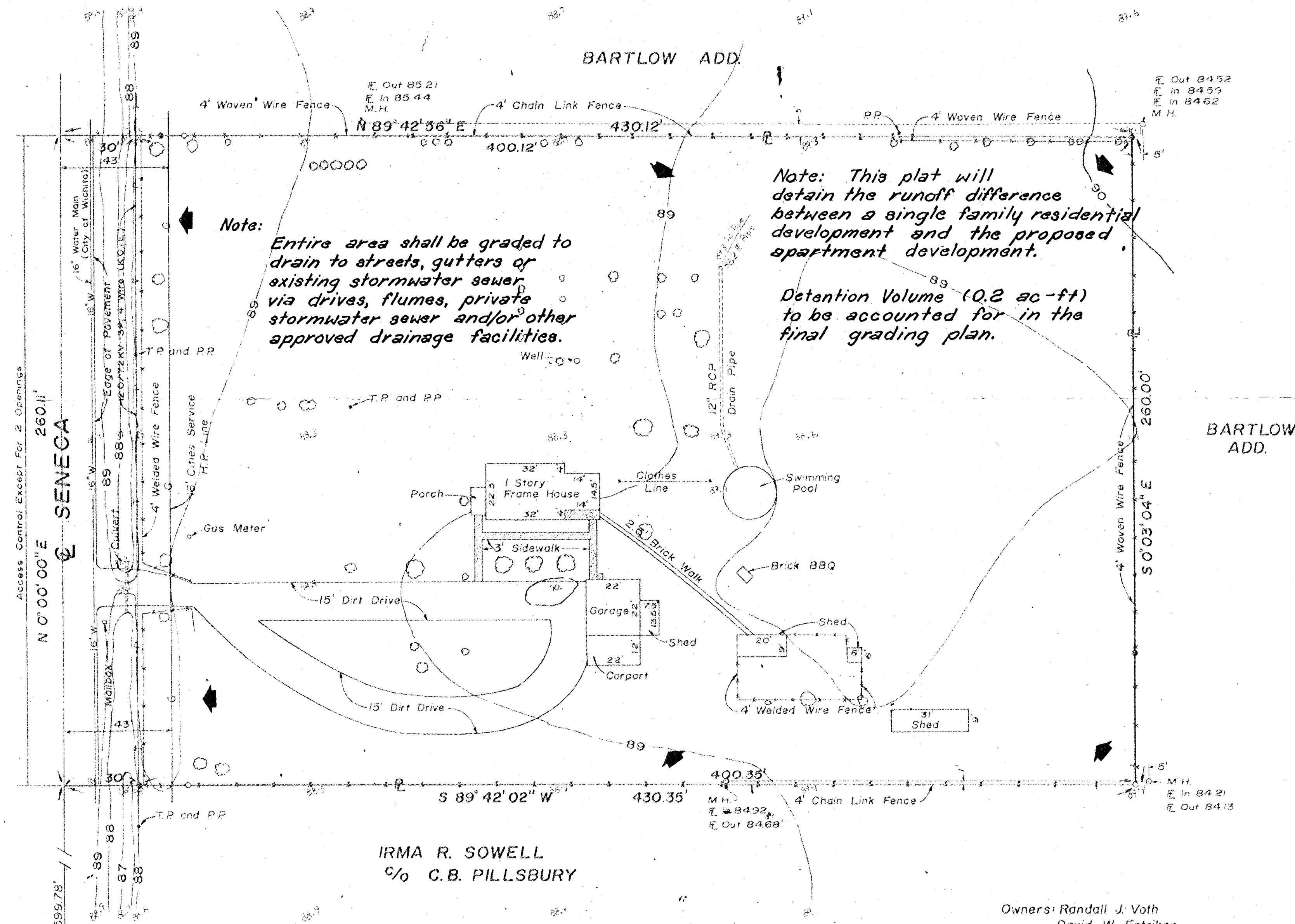


# THUNDERBIRD ADDITION

## DRAINAGE CONCEPT

SEPTEMBER 19, 1980



Note: Entire area shall be graded to drain to streets, gutters or existing stormwater sewer, via drives, flumes, private stormwater sewer and/or other approved drainage facilities.

Note: This plat will detain the runoff difference between a single family residential development and the proposed apartment development.

Detention Volume (0.2 ac-ft) to be accounted for in the final grading plan.

IRMA R. SOWELL  
% C.B. PILLSBURY

Owners: Randall J. Voth  
David W. Entriaken

Mtg: American Savings Association of Kansas

Engineer: Professional Engineering Consultants  
1440 E. English  
Wichita, Kansas

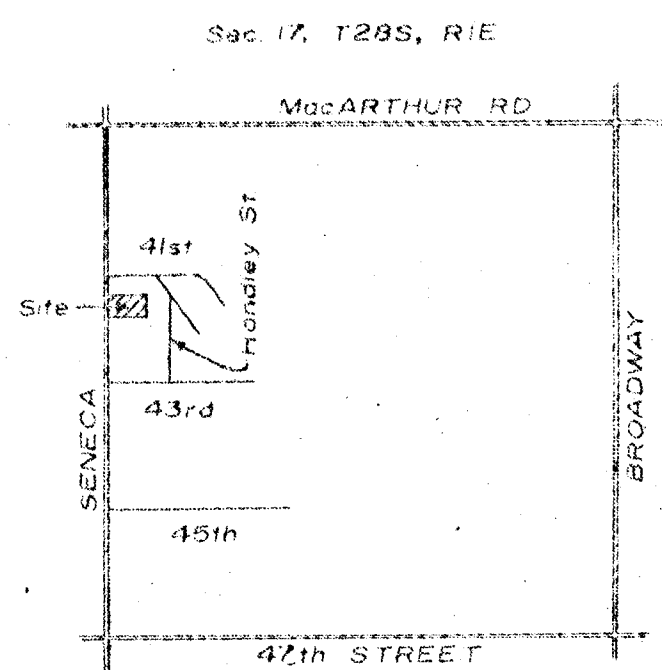
**Utilities:**

- Gas - 4" Gas main available at Seneca and 41st South.
- Water - 16" Cast Iron line 2.5' W. of E. curb line.
- Power - 120/7.2KV 3φ, 4 Wire

NOTE: All Existing Improvements To Be Removed.

Scale: 1" = 30'

- Iron Found
- Iron Set



VICINITY MAP

W 1/4 Cor.  
Sec. 17, T28S, R1E