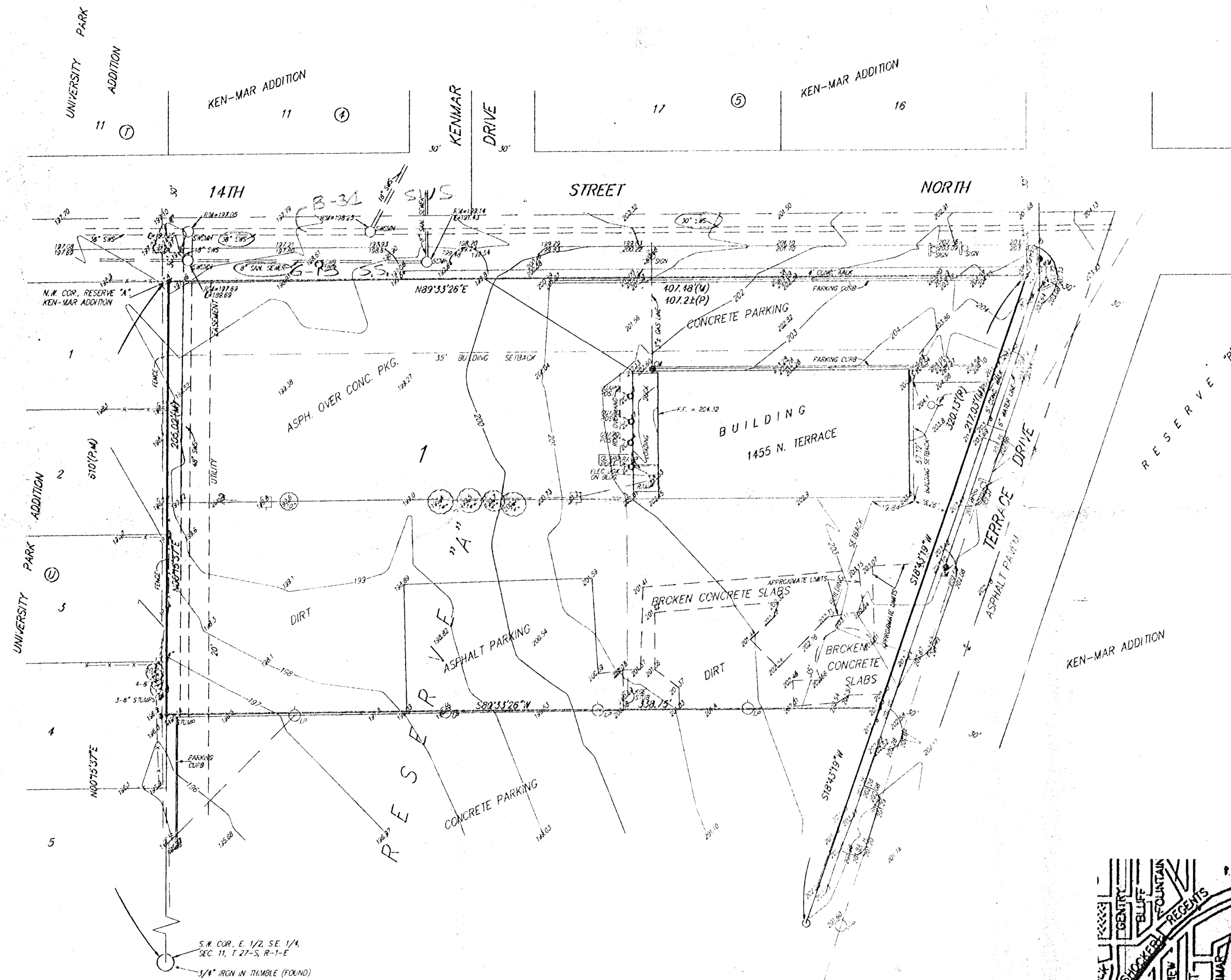


# SKETCH PLAT KEN-MAR 2ND ADDITION WICHITA, SEDGWICK COUNTY, KANSAS

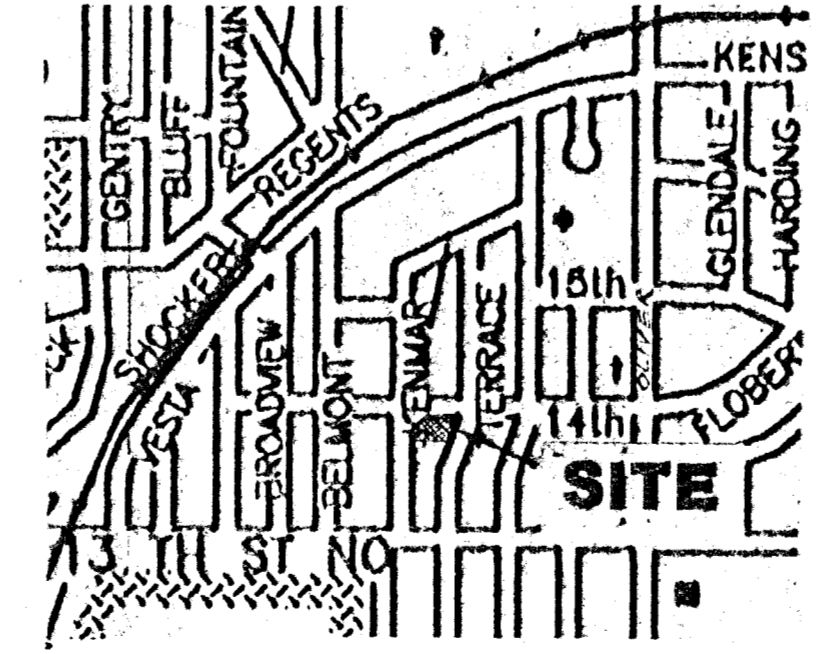


- SCALE  
1" = 50'
- = 1/2" REBAR W/ 'BAUGHMAN' CAP (SET)
  - ▲ = 3/4" REBAR (FOUND)
  - = 1/2" IRON (FOUND)
  - (P) = PLATTED
  - (M) = MEASURED
- LEGEND
- ↑ - GUY WIRE
  - - DECIDUOUS TREE
  - - POWER POLE
  - - LIGHT POLE
  - ⊙ - WATER METER
  - ⊙ - GAS METER
  - - UTILITY POST
  - - SANITARY SEWER MANHOLE
  - - STORM WATER SEWER MANHOLE
  - ⊙ - SIGN

OWNER:  
MICHAEL'S REAL ESTATE #2, L.L.C.  
W. A. MICHAELIS, JR., PRESIDENT  
211 N. BROADWAY  
WICHITA, KS 67202  
PH: 316-264-8394

LEGAL DESCRIPTION:  
THE NORTH 205 FEET OF RESERVE "A",  
KEN-MAR ADDITION TO WICHITA, KANSAS.

BENCH MARK:  
TEMPORARY BENCHMARK, N.E. CORNER OF  
THE INTERSECTION, OLIVER & 13TH ST. NO.  
"C" CUT, N.W. COR. OF CONC. BASE OF  
TRAFFIC LIGHT POLE.  
ELEV. = 208.45



**VICINITY MAP**

9 SEP 1994