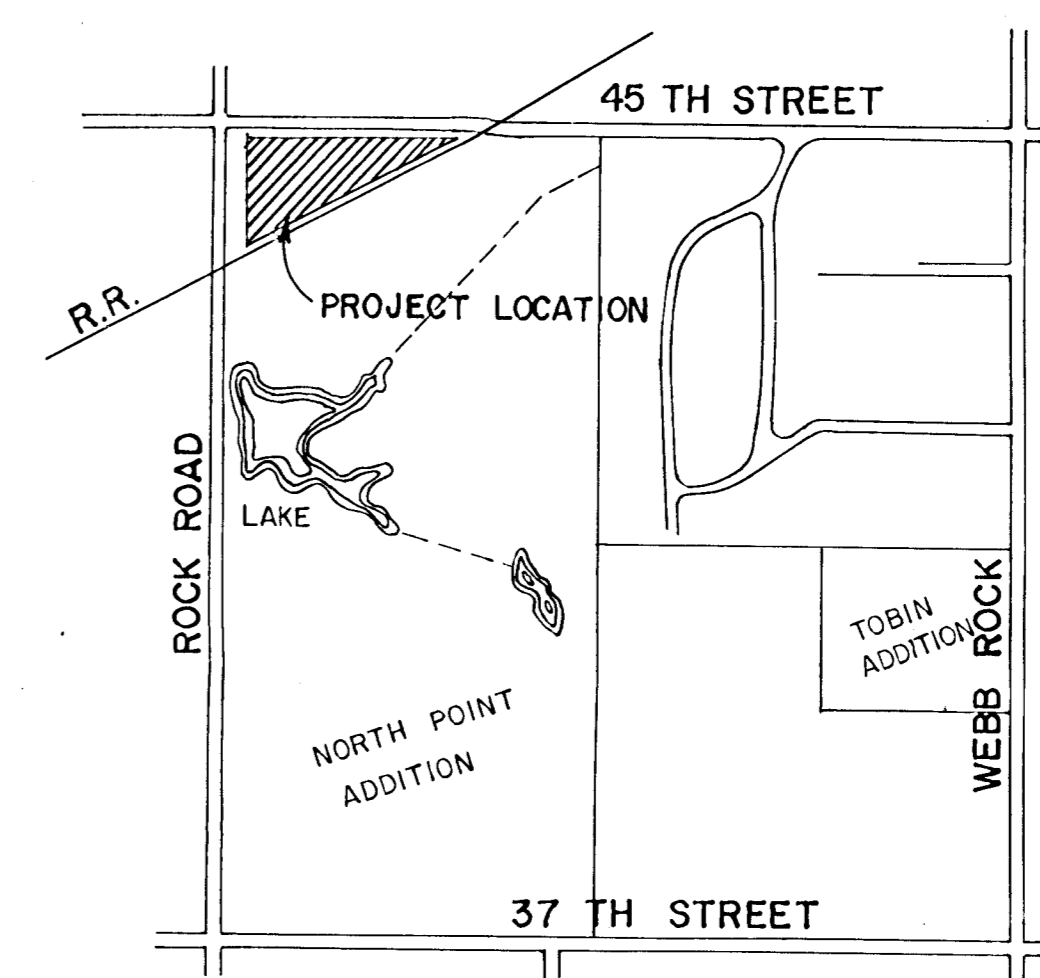
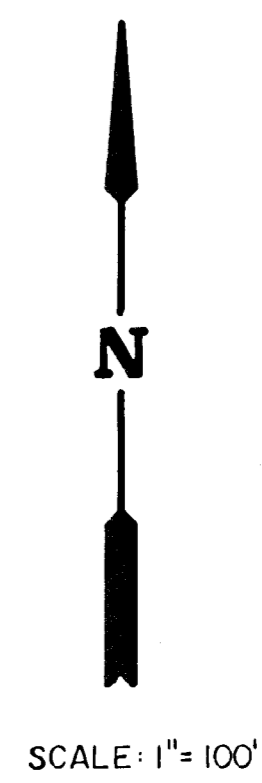
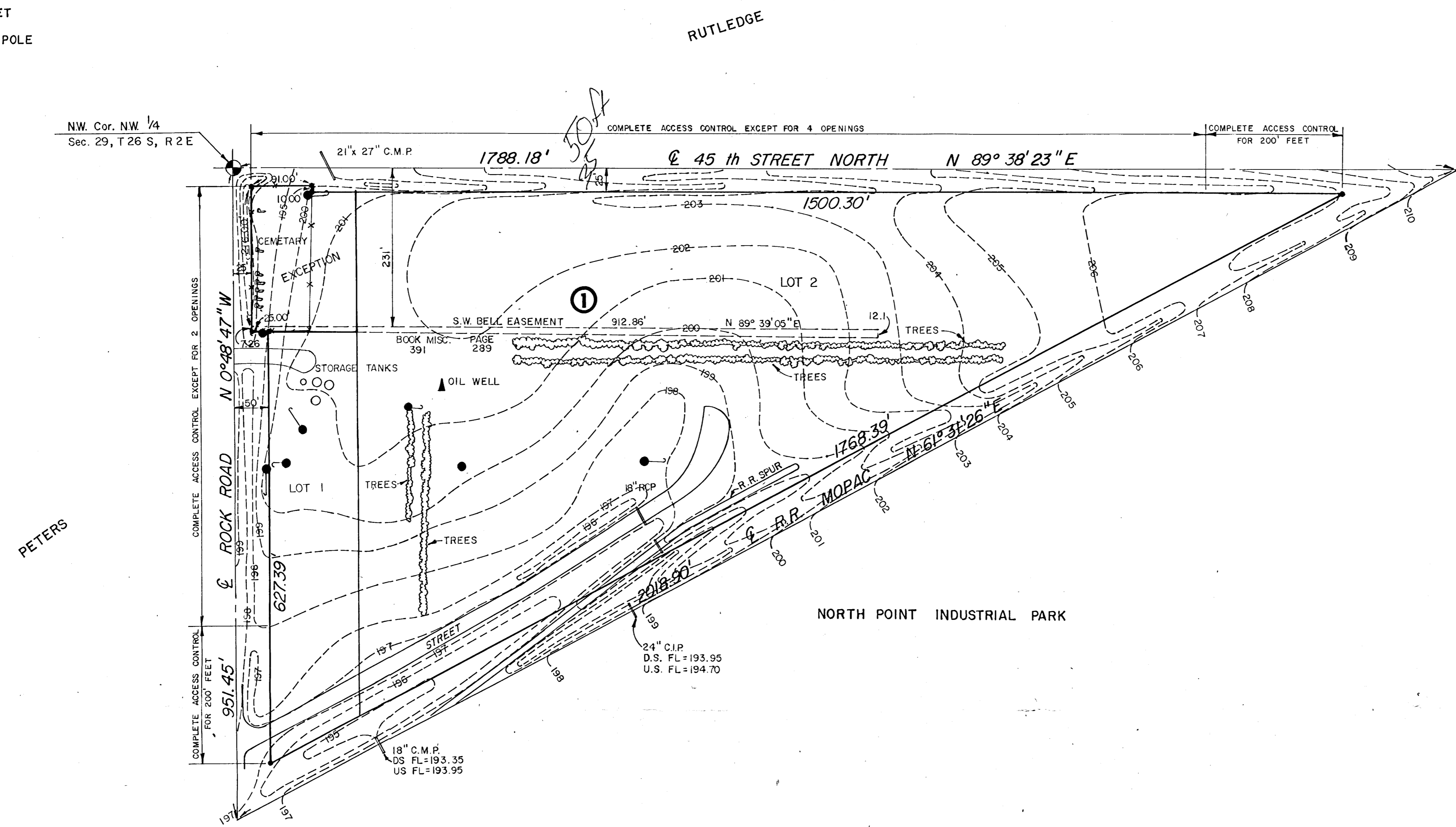


LEGEND

- = IRON SET
- ⦿ = POWER POLE
- x = FENCE



LOCATION MAP

PRELIMINARY PLAT OF 45 ROCK ROAD INDUSTRIAL PARK

AN ADDITION TO WICHITA, SEDGWICK COUNTY, KANSAS

DECEMBER, 1983

	RITCHIE CORPORATION	Design M.D.H. Drawn by K.D.O. Checked by K.H.B. Date Job no.
	PRELIMINARY PLAT	
MID-KANSAS ENGINEERING CONSULTANTS PA 240 NORTH ROCK ROAD SUITE 130 WICHITA, KANSAS 67206		Sheet 682-6561 of