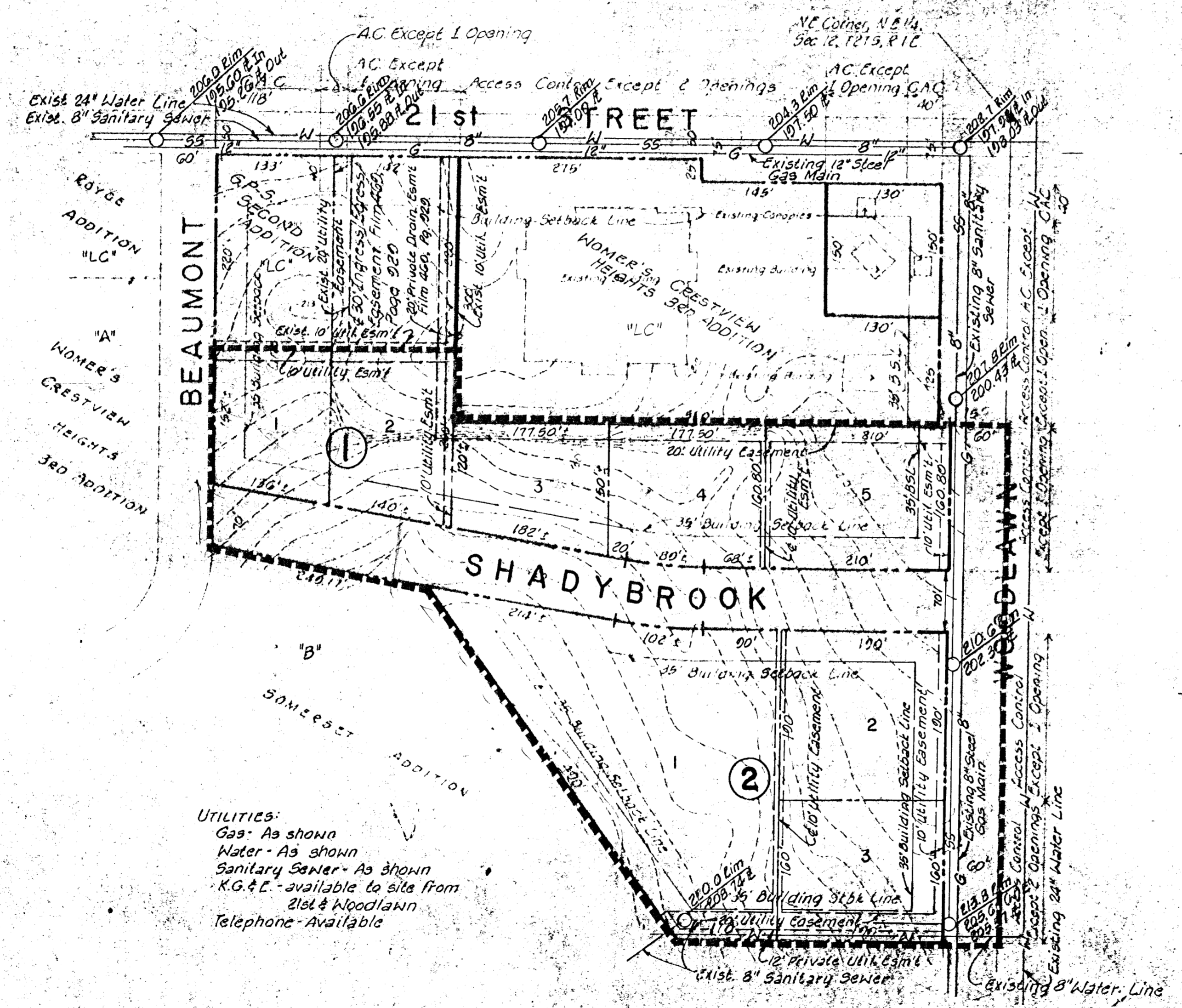


PRELIMINARY PLAT

G.P-S. 3RD ADDITION



UTILITIES:
 Gas - As shown
 Water - As shown
 Sanitary Sewer - As shown
 K.G. & L. - available to site from
 21st & Woodlawn
 Telephone - Available

May 14, 1931
 Bench Mark - Woodlawn and 21st St. No. City
 of Wichita bench mark disc,
 45.4 feet east and 45.4 feet
 north of & both.
 Elev. 200.65 City Datum

Owner: Slavson Investment Corporation
 200 Douglas Building
 Wichita, Kansas

Engineer: Professional Engineering Consultants
 1440 E. English
 Wichita, Kansas

Zoning - "LC"

