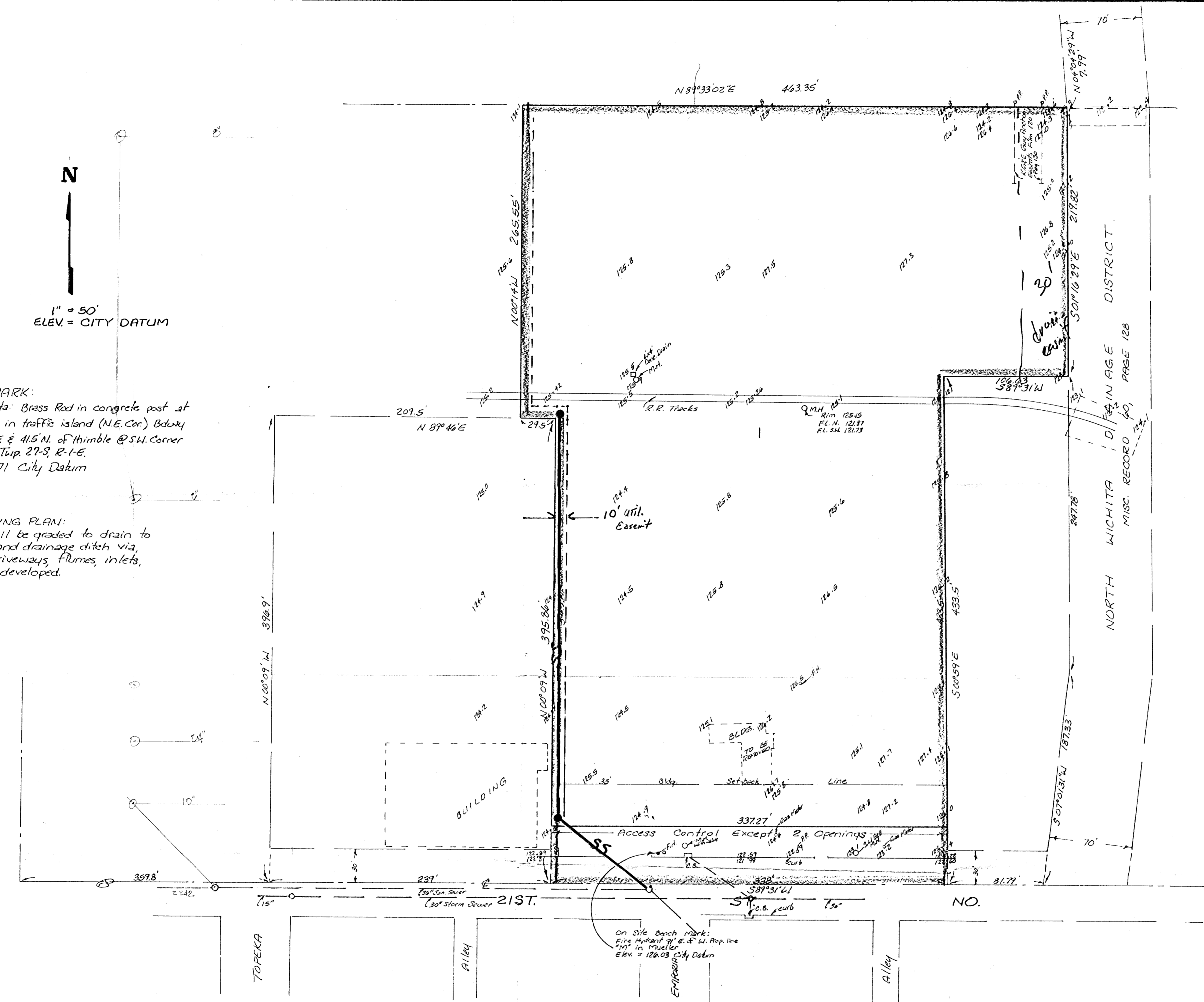


BENCH MARK:
 City of Wichita: Brass Rod in concrete post at north end & in traffic island (N.E. Cor.) Bdwy & 21st. 22'E & 41.5' N. of thimble @ S.W. Corner SW 1/4 Sec. 4, Twp. 27-S, R-1-E. Elev. = 124.71 City Datum

LOT GRADING PLAN:
 The lot shall be graded to drain to the street and drainage ditch via approved, driveways, flumes, inlets, etc. when developed.



SKETCH PLAT HOY ADDITION

TRACT IN THE S 1/2 OF THE SW 1/4 OF THE SW 1/4 OF SEC. 4, TWP. 27-S, R-1-E

FOOD SERVICE CORP.