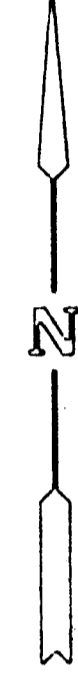
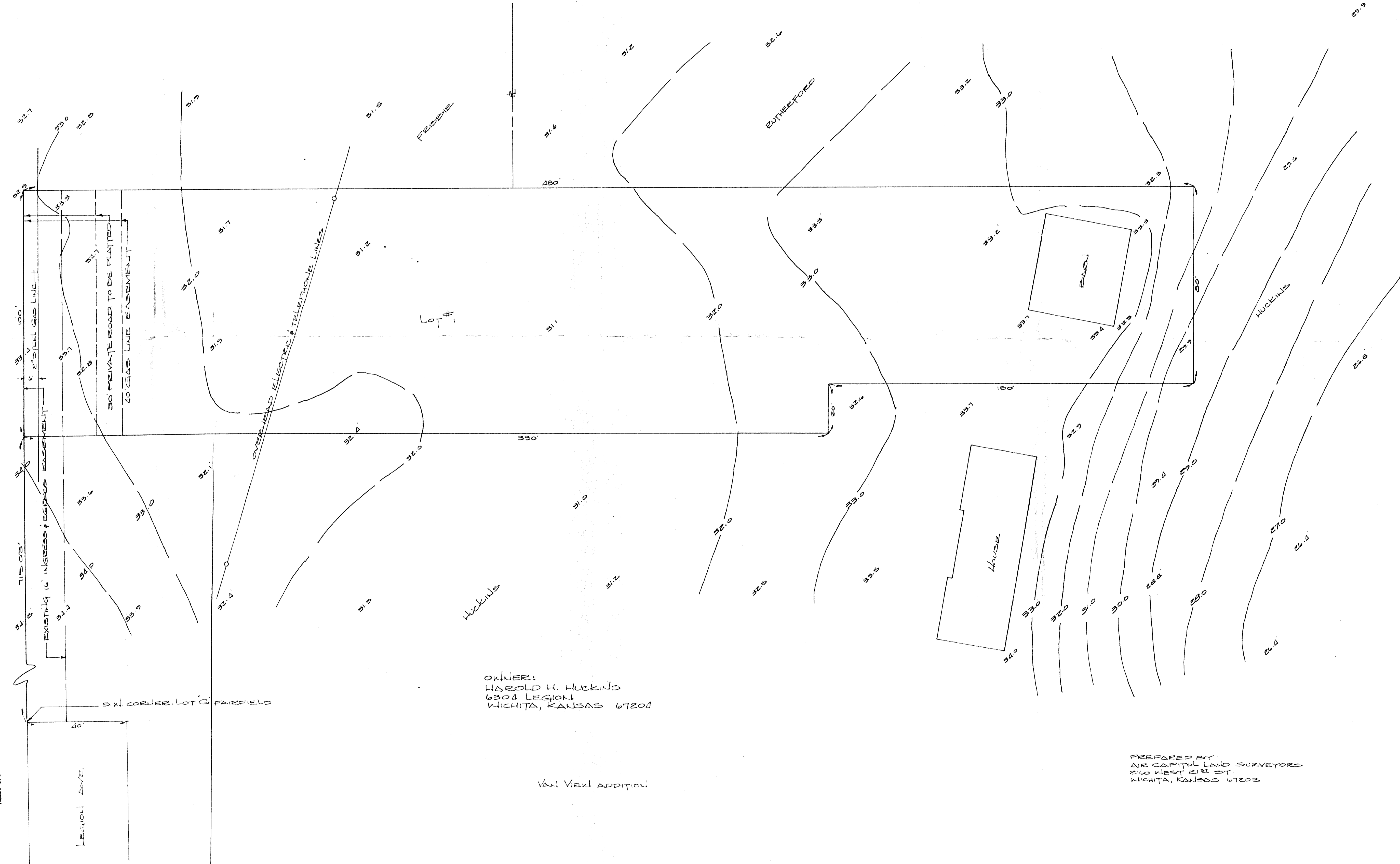


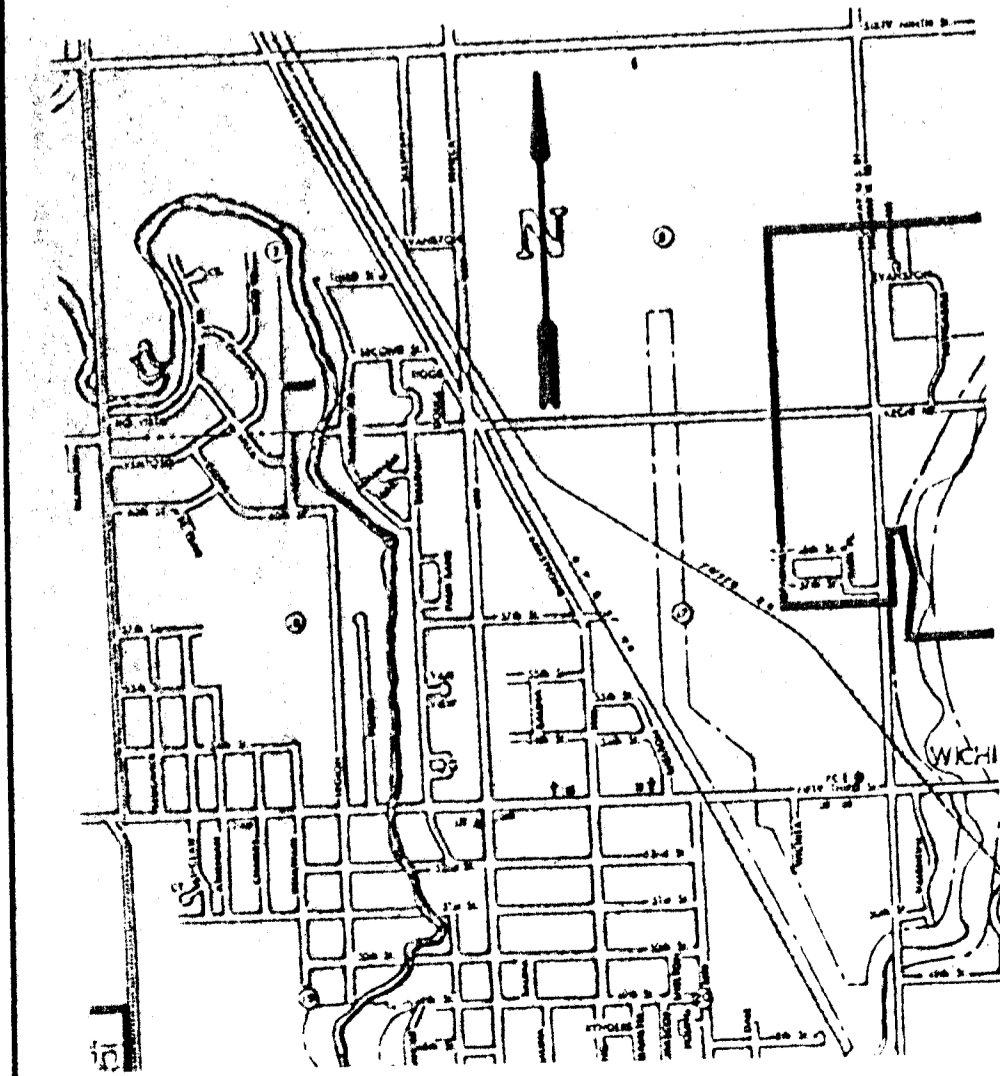
**PRELIMINARY PLAT
HUCKINS ADDITION
SEDGWICK COUNTY, KANSAS**



OCT 20, 1981
SCALE: 1"=20'
TOPOGRAPHIC SURVEY - OCT 1, 1981
B.M. = TOP OF IRON NAIL NUMBER 5 X 1 CORNER
520 TITZMANN ELEV. 1558.02
ZONING - R-1



210 VISTA ESTATES 2ND EASEMENT
10' UTILITY EASEMENT
6\"/>



OWNER:
HAROLD H. HUCKINS
6304 LEGION
WICHITA, KANSAS 67201

VAN VIER ADDITION

PREPARED BY
AIR CAPITOL LAND SURVEYORS
210 WEST 21ST ST.
WICHITA, KANSAS 67203