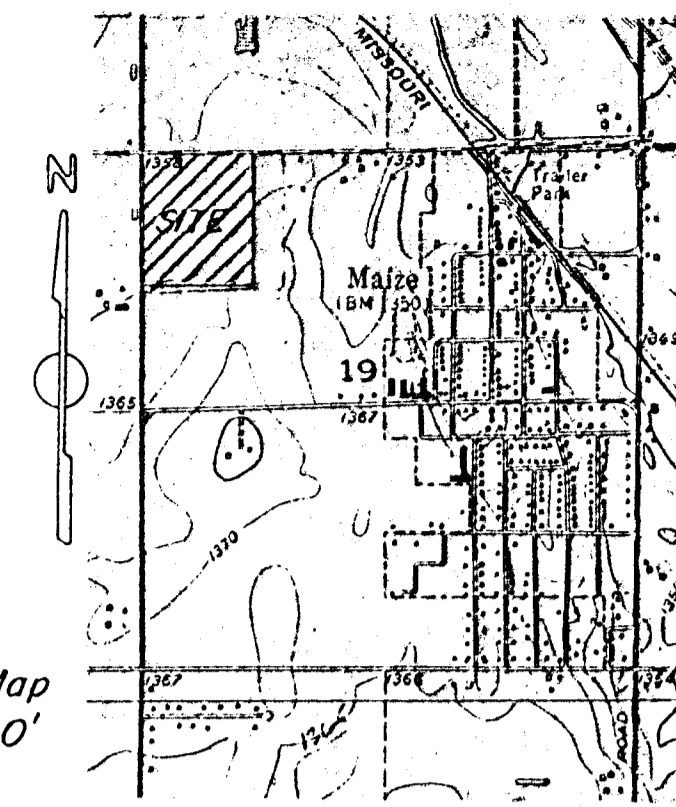
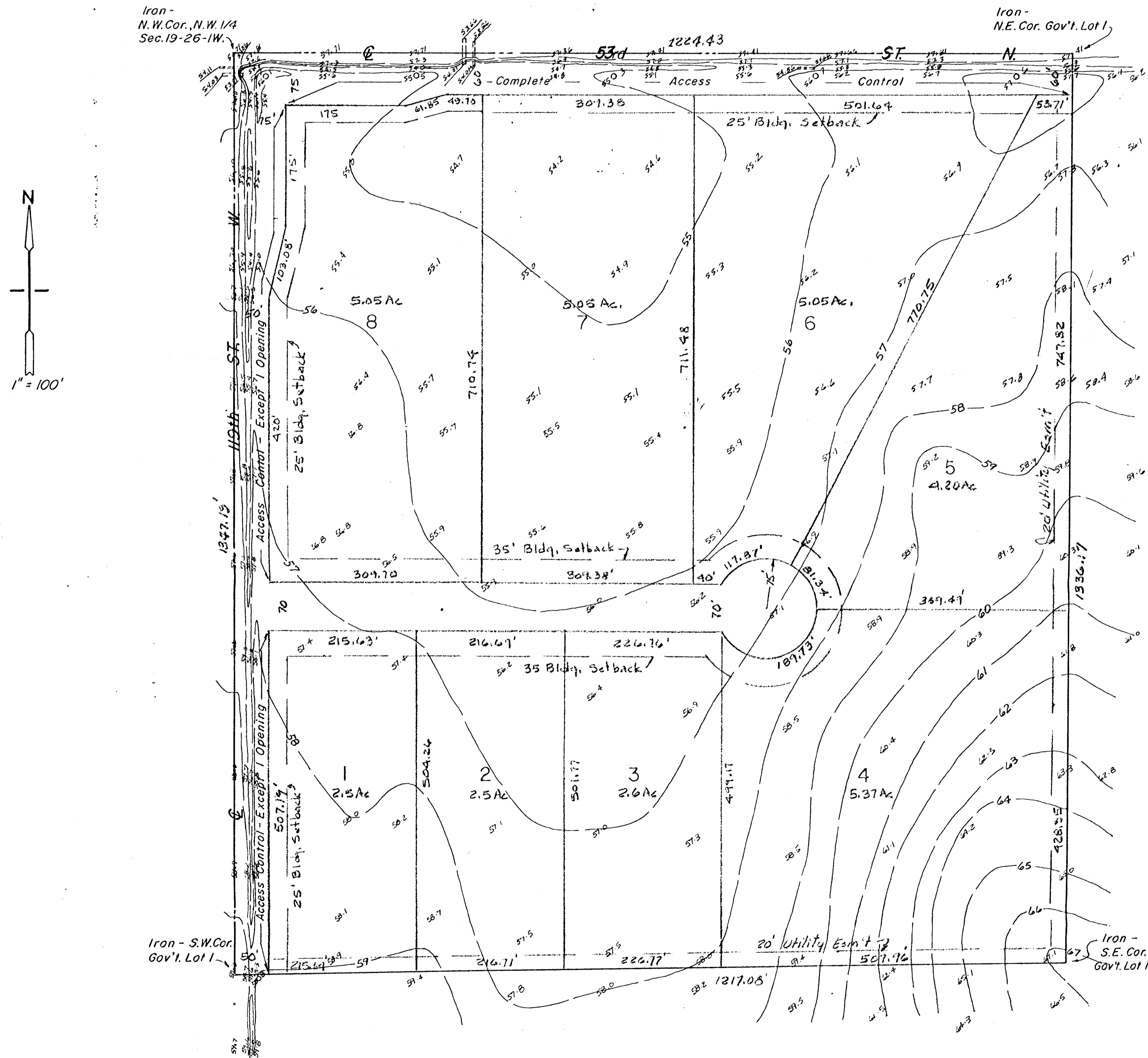


PRELIMINARY
PLAT
HULTMAN ADDITION
SEDGWICK COUNTY, KANSAS



LEGAL DESCRIPTION -

Gov't. Lot 1, in the N.W. 1/4 of
Sec. 19, T. 26 S., R. 1 W. of the
6th. P.M. Sedg. County, Kans.



MOEHRING & ASSOCIATES
CONSULTING ENGINEERS
WICHITA
APRIL 1986