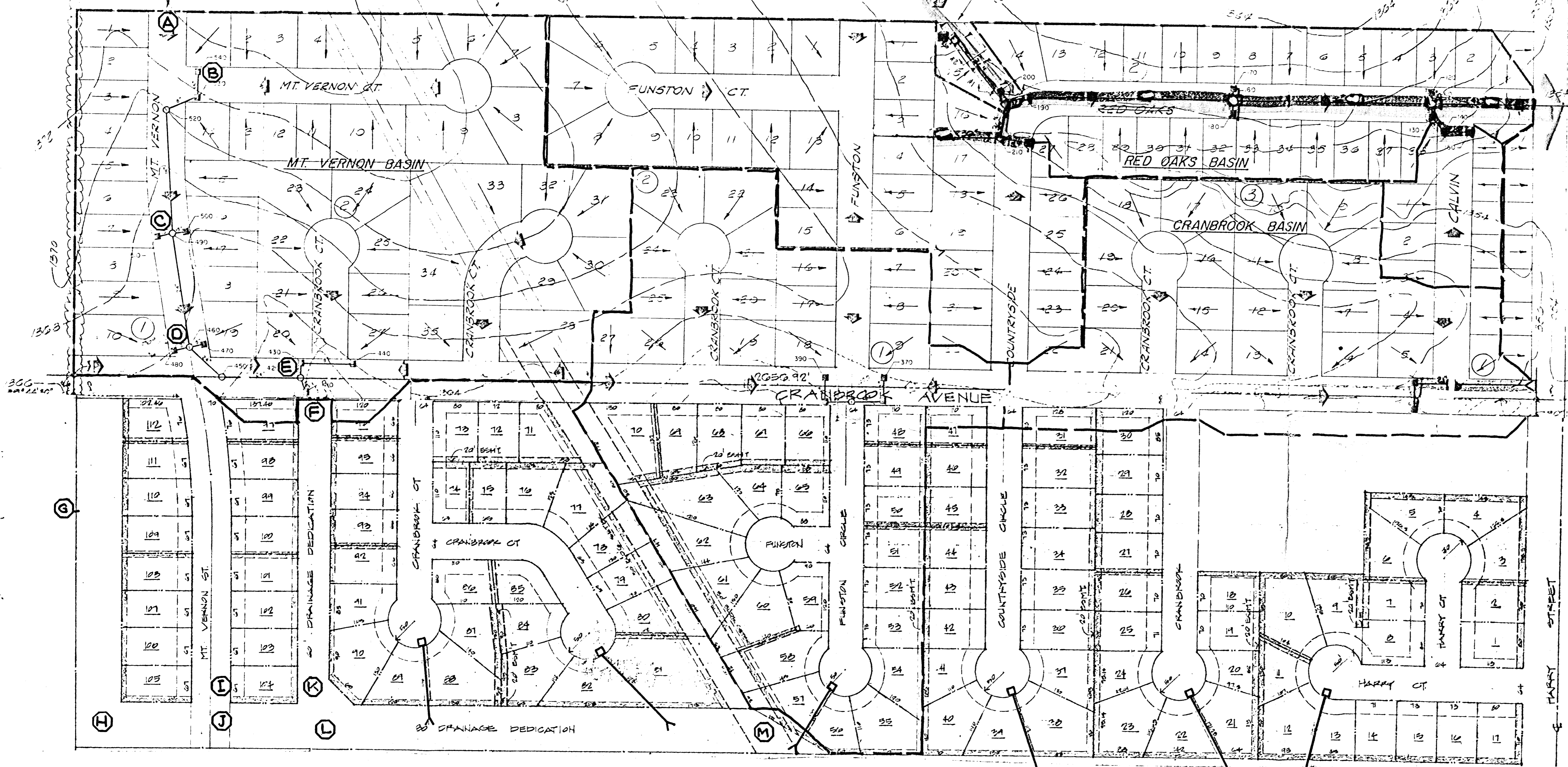


Note: A Maximum of 75 cfs could be generated for the 100 year storm.

NOTE: SEE CALCULATION SHEETS FOR DRAINAGE AREA TRIBUTARY TO THIS POINT.



HUNTCREST SECOND ADDITION

SEDGWICK COUNTY KANSAS

DRAINAGE CONCEPT

SCALE 1" = 100.0'

239 Parle • Suite 2
Wichita, Kansas • 67211
(316) • 263 - 8261

Architects - Planners - Commercial Consultants

Keith Parker Associates III

Issue

