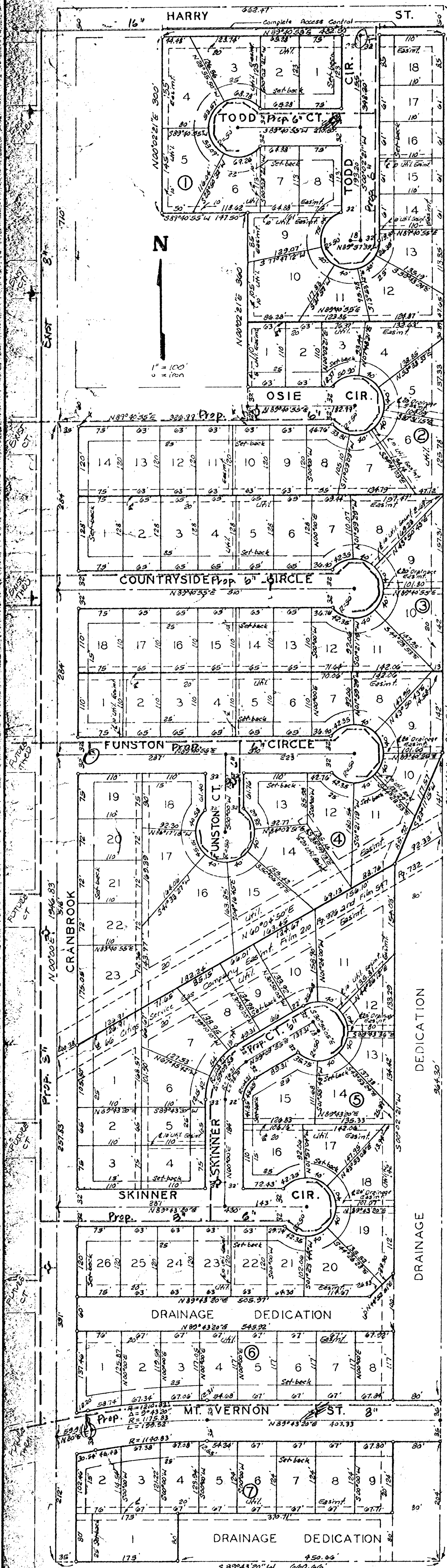


HUNTCREST 2ND. ADDITION

WICHITA, KANSAS.



state of Kansas? S.S. We, Baughman Company, P.A., Surveyors in aforesaid county and state do hereby certify that we have surveyed and platted "HUNTCREST 2ND. ADDITION", Wichita, Kansas, and that the accompanying plat is a true and correct exhibit of the property surveyed, described as being the E 1/2 of the E 1/2 of the NW 1/4 of Sec. 33, Twp. 27 S, R. 2-E of the 6th P.M., Sedgewick County, Kansas, except the north 1370 feet thereof, together with and being a replat of that part of Huntcrest Addition, Sedgewick County, Kansas, Osie Street, Funston Street, Cranbrook Avenue and Cambridge Avenue, described as beginning at a point on the east line of said NW 1/4, said point being 50 feet south of the N.E. corner thereof, thence south along the east line of said NW 1/4, 1320 feet to the south line of Funston Street as platted in said Addition; thence west along the south line of said Funston Street, 622.25 feet to the west line of the E 1/2 of the E 1/2 of said NW 1/4; thence north along the west line of the E 1/2 of the E 1/2 of said NW 1/4, 640 feet to the extended south line of Osie Street, as platted in said Addition; thence east along the south line of said Osie Street and extended, 326.99 feet to the N.W. corner of Lot 11, in said Addition; thence north, 340 feet to the N.W. corner of Lot 9, in said Addition; thence west 149.50 feet to the S.W. corner of Lot 2, in said Addition; thence north, 300 feet to the N.W. corner of said Lot 2; thence east along the south line of Harry Street as platted in said Addition, and extended, 432.50 feet to the point of beginning. The streets, easements and setbacks being vacated by virtue of K.S.A. 12-512(b).

Baughman Company, P.A.

4/30/82
Date

William L. Korber
Surveyor

This plat of "HUNTCREST 2ND. ADDITION", Wichita, Kansas, has been submitted to and approved by the Wichita-Sedgewick County Metropolitan Area Planning Commission, Wichita, Kansas. Dated this 11th day of February, 1982.

Wichita-Sedgewick County Metropolitan Area Planning Commission.

James E. Gaudin II
Chairman
Robert A. Parker
Secretary

This plat approved and all dedications shown hereon accepted by the Board of Commissioners of the City of Wichita, Kansas, this 21st day of April, 1982.

Albert H. Kirk
Mayor
Donald G. Givrick
City Clerk

This plat approved and all dedications shown hereon accepted by the Board of Commissioners, Sedgewick County, Kansas, this 21st day of April, 1982.

Jack Spratt
Chairman
Tom Scott
Commissioner
Donald E. Grogg
Commissioner
Dorothy K. White
County Clerk

Entered on transfer record this 21st day of April, 1982.
Dorothy K. White
County Clerk

State of Kansas? S.S. The foregoing instrument was acknowledged before me, this 21st day of May, 1982, by Stephen F. Barton, a single person and by Frank W. Barton, a single person and by Keith E. Parker, a single person.

Mark J. Lewis
Notary Public

My Comm Exp. 12 May 1984

State of Kansas? S.S. This is to certify that this plat has been filed for record in the office of the Register of Deeds, this 21st day of April, 1982, at 11:00 a.m. and is duly recorded.

Beate F. Hertz
Register of Deeds
Pat Kuttler
Deputy

FIRE HYDRANT LOCATION PLAN
APRIL 20, 1982