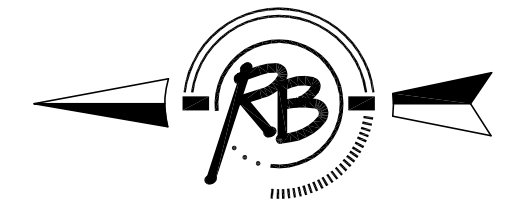
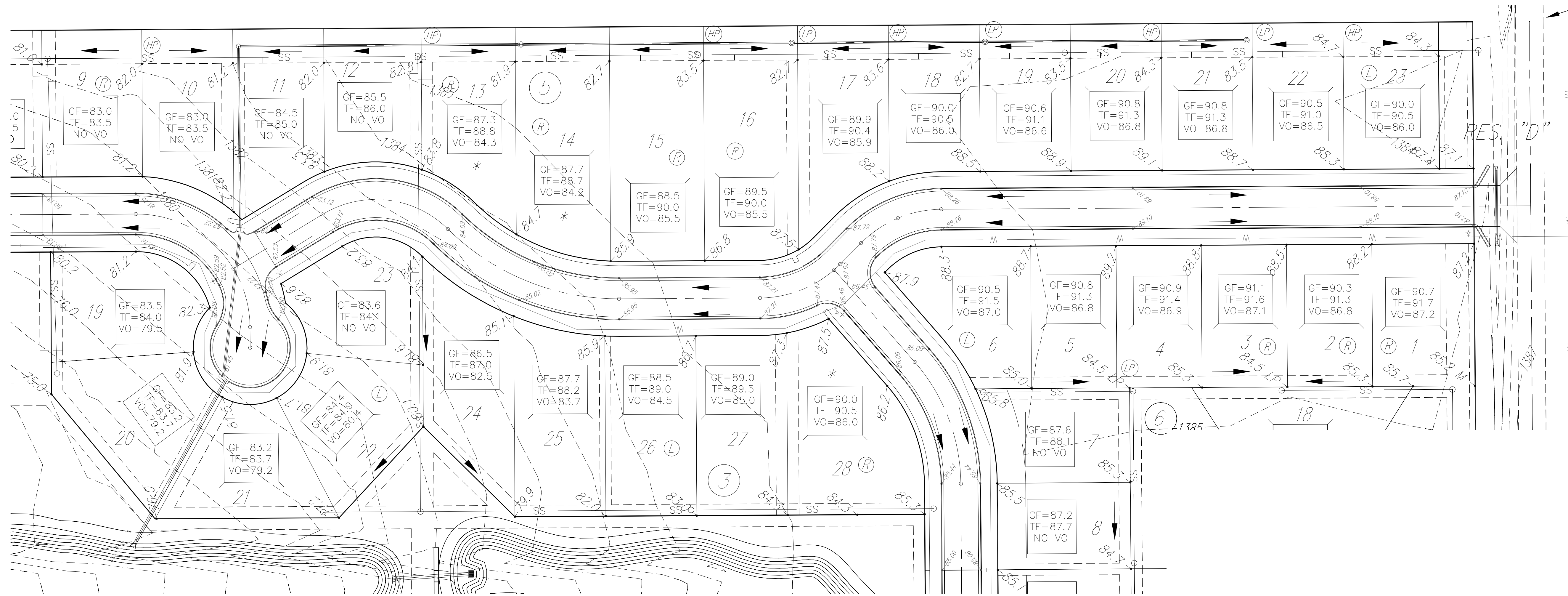


BRENTWOOD SOUTH ADDITION

Wichita, Sedgwick County, Kansas
Phase 4 Grading Plan



SCALE 1" = 50'

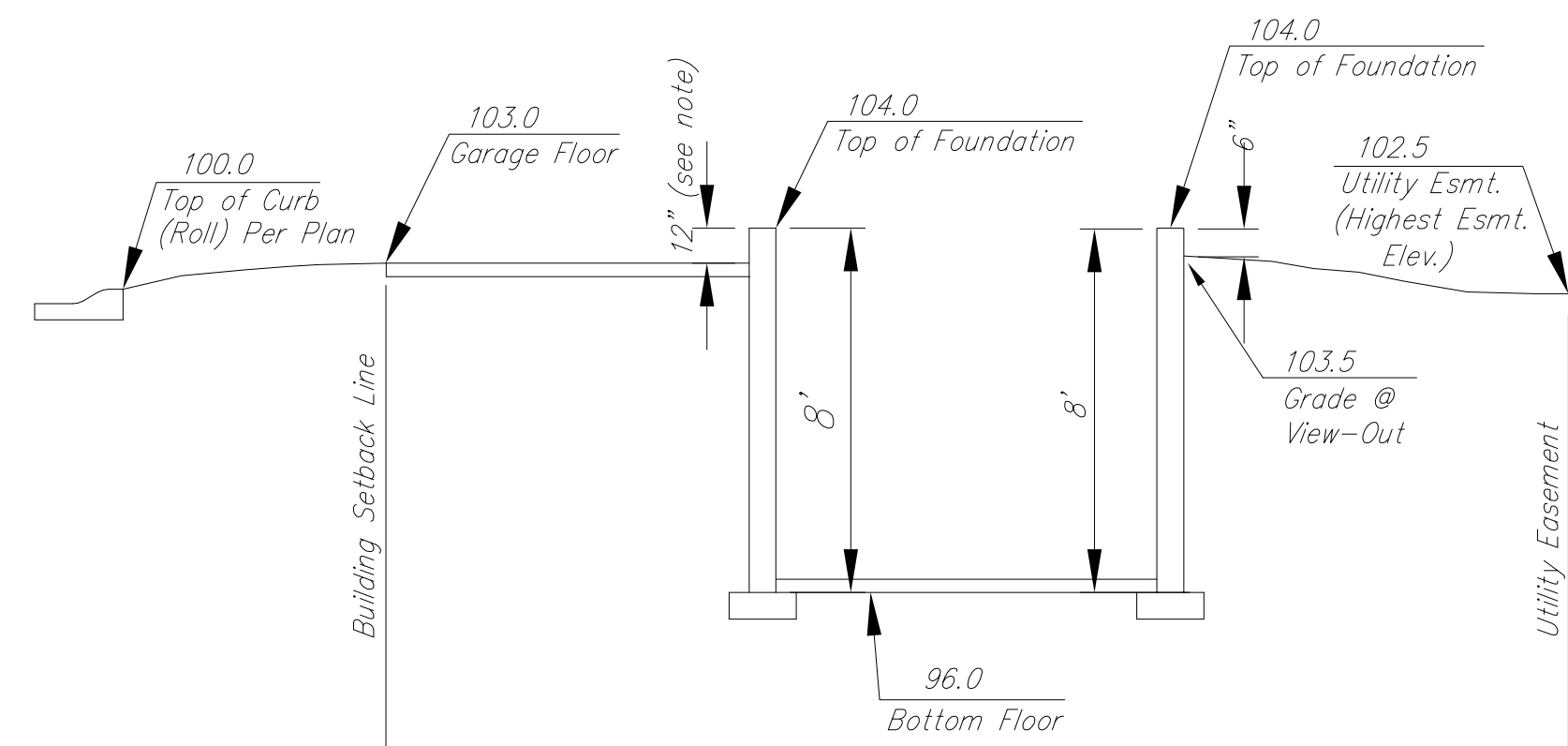


BENCHMARK: USGS BRASS PLUG 28' S. & 520' W. OF CENTERLINE INTERSECTION OF CAPRI & PAWNEE. ELEV. 1386.25 NGVD

BENCHMARK: CITY OF WICHITA STD. DISC 20.8' W. & 54.5' S. OF CENTERLINE INTERSECTION DALTON & PAWNEE. ELEV. 1379.60 NGVD

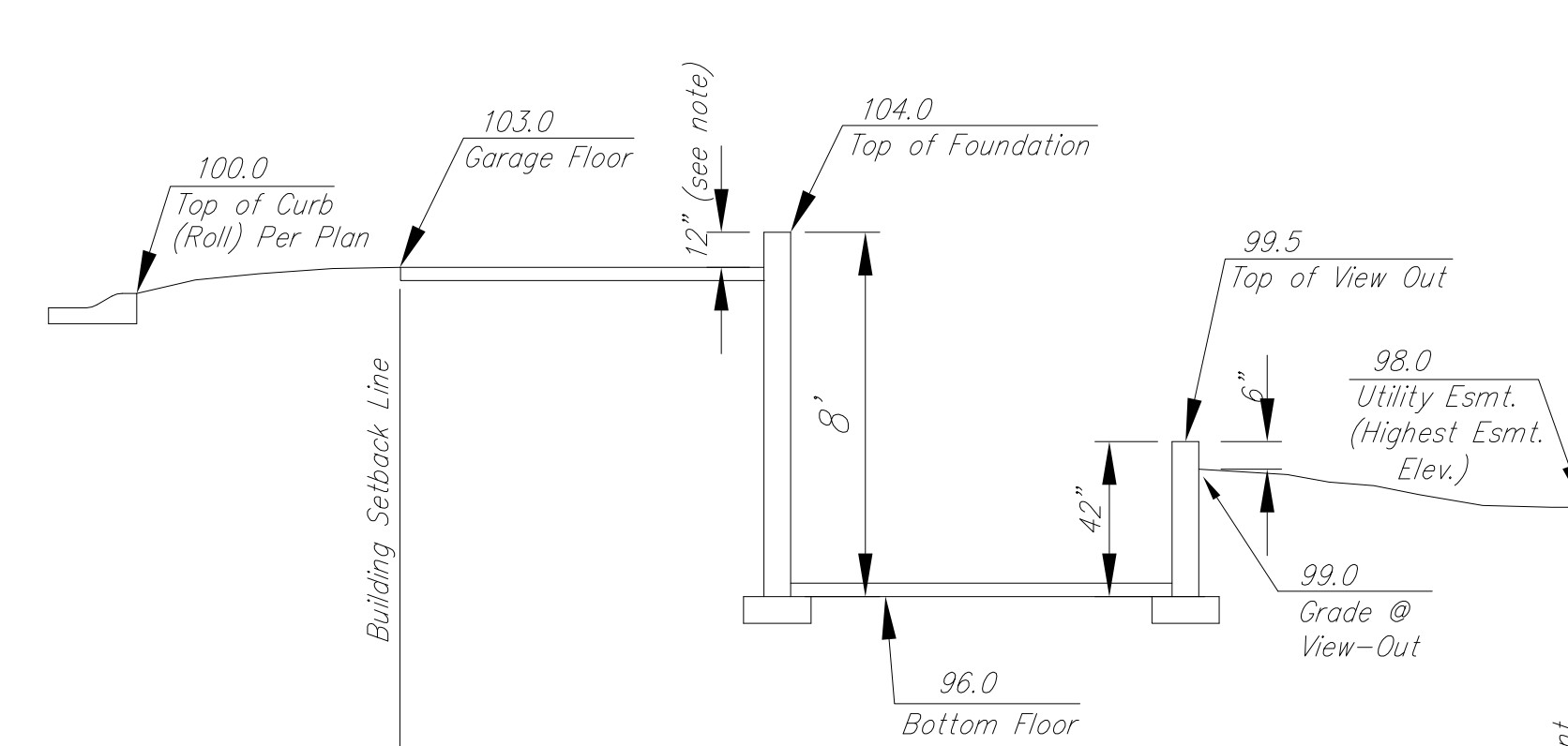
- GF = Garage Floor
- TF = Top of Foundation
- VO = Top of Viewout Wall
- (L) = Garage Left
- (R) = Garage Right
- * = Long Drive Required

MINIMUM BUILDING PAD ELEVATION FOR LOWEST OPENING INTO STRUCTURES		
BLOCK	LOT NO.	ELEVATION (N.G.V.D.)
3	1, 2	1334.5
4	1, 2, 3, 4, 5, 6	1336.5



* Varies (Check Individual Lot)

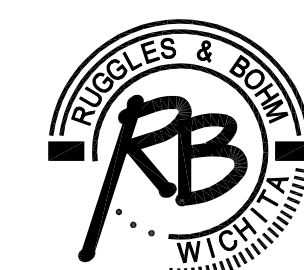
Section Through Typical Full Basement



* Varies (Check Individual Lot)

Section Through Typical View-Out Lot

REVISED:
10/23/2007



Ruggles & Bohm, P.A.
Engineering, Surveying, Land Planning
924 North Main
Wichita, Kansas 67203
www.rbkansas.com
(316) 264-8008
(316) 264-4621 fax
E-mail: info@rbkansas.com