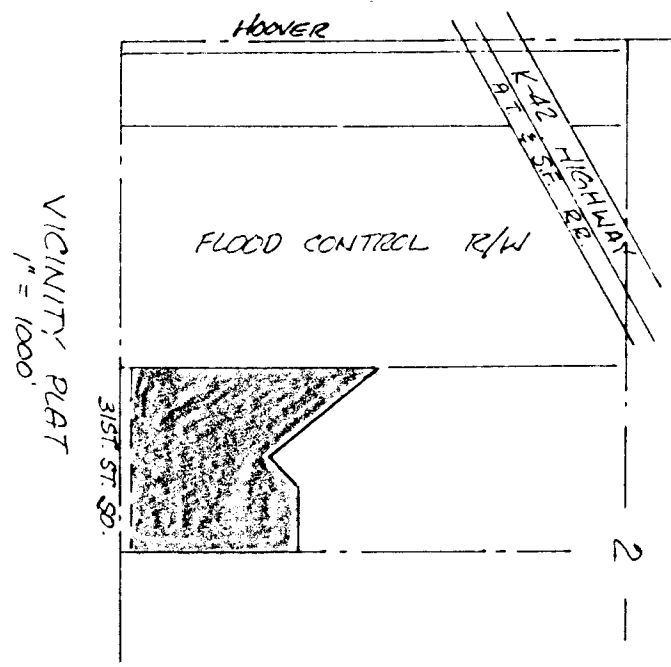
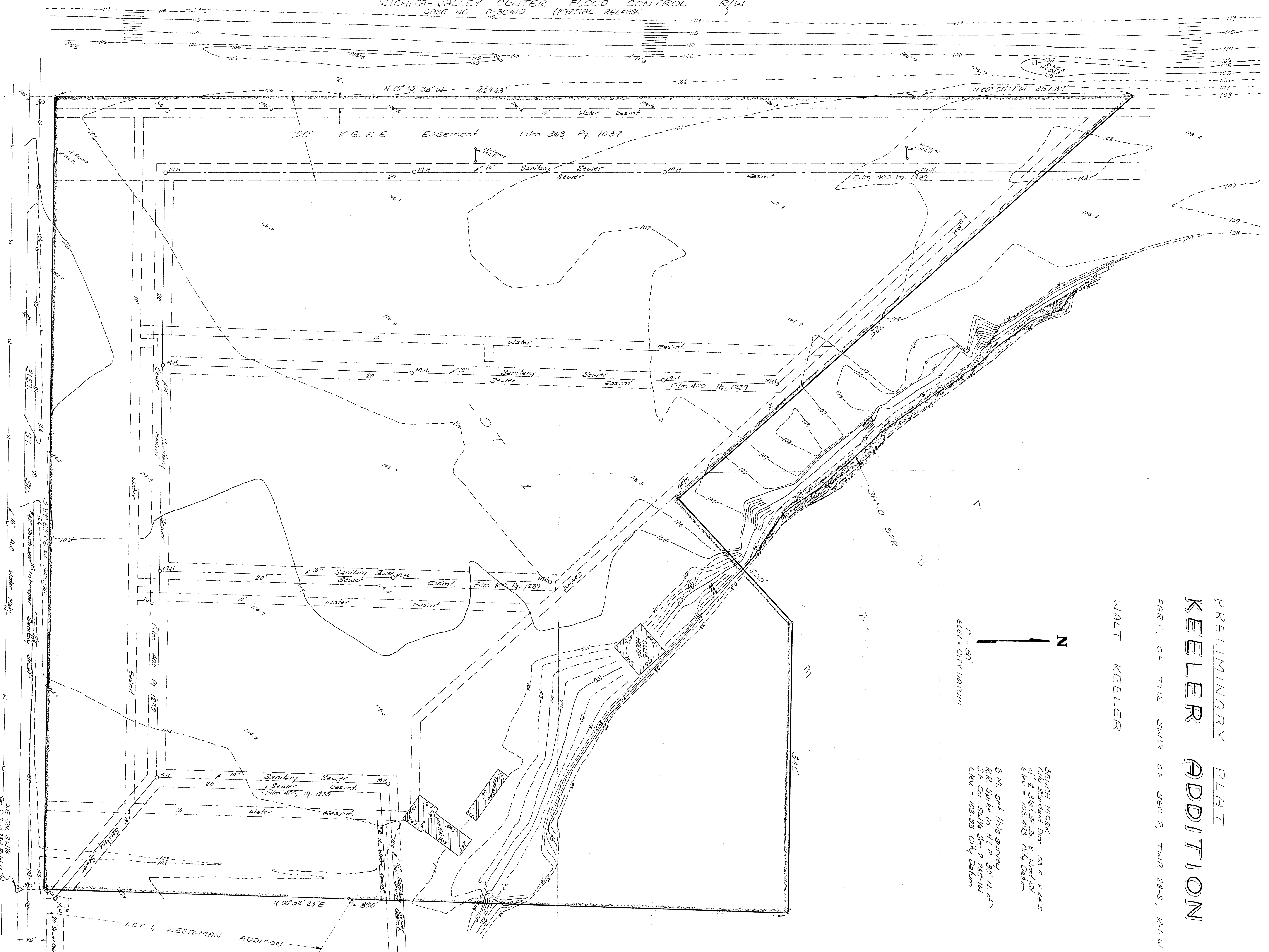
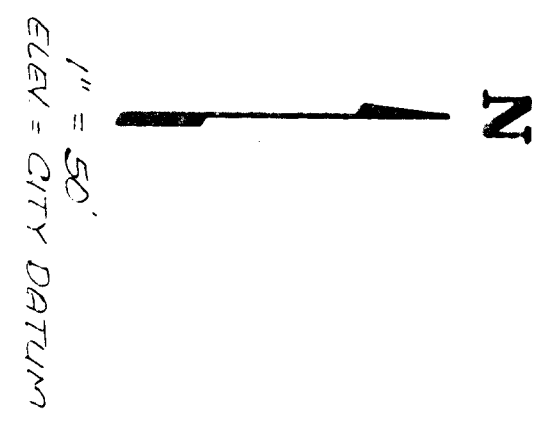


WICHITA-VALLEY CENTER FLOOD CONTROL R/W
 CASE NO. A-30410 (PARTIAL RELEASE)



PRELIMINARY PLAT
 KEELER ADDITION

PART OF THE SW 1/4 OF SEC. 2, T49P 28-S, R-1-W
 WALT KEELER



BENCH MARK
 CIVIL Standard Disc. 53 E. E. 44 S.
 C.N. & 3457 54' 55" E. 1452' 54"
 Elev = 103.473 City Datum

B.M. Set this survey
 R.R. Spike in H.L.P. 30' N. of
 S.E. Cor. SW 1/4 Sec. 2-28-S-1-W
 Elev = 103.93 City Datum