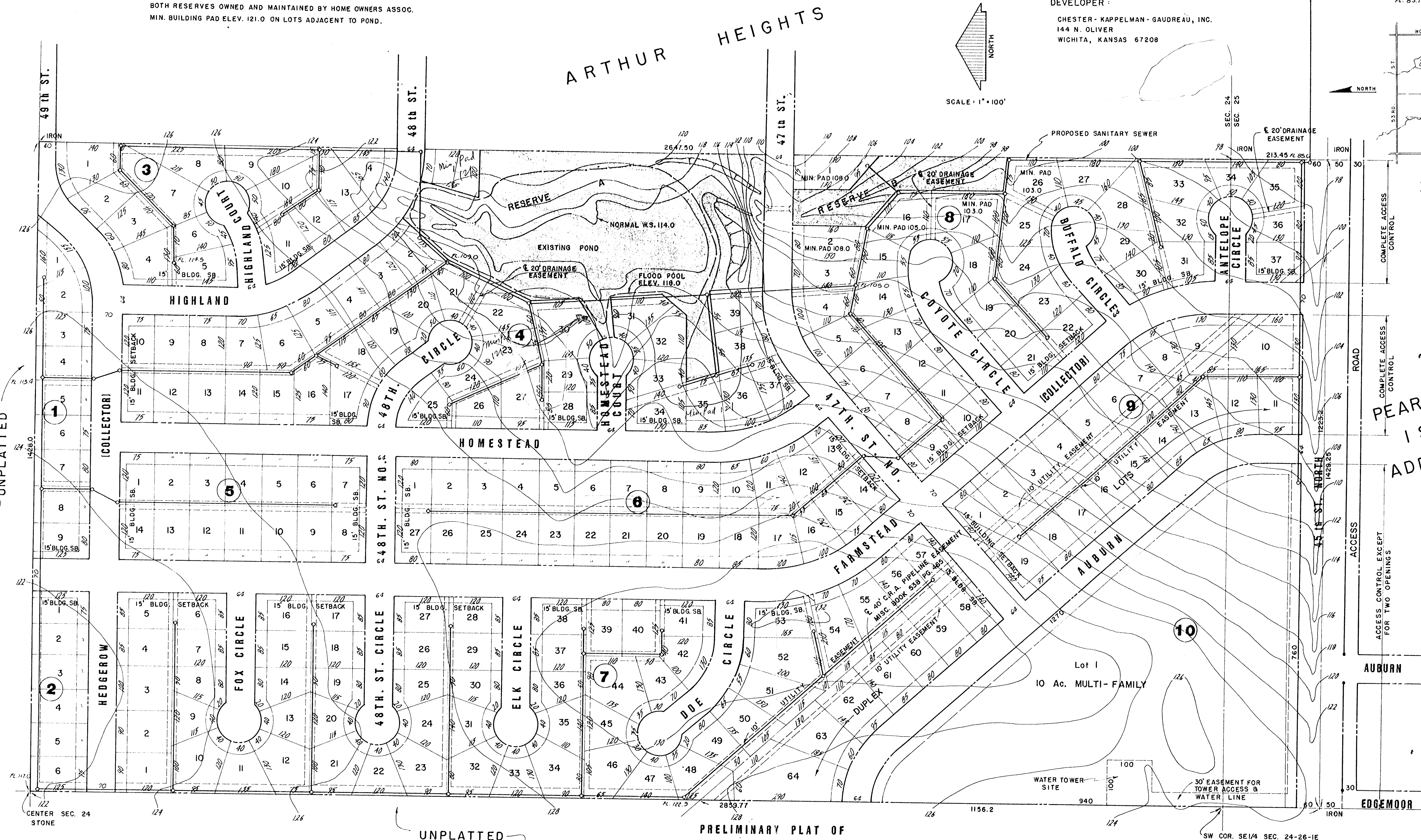
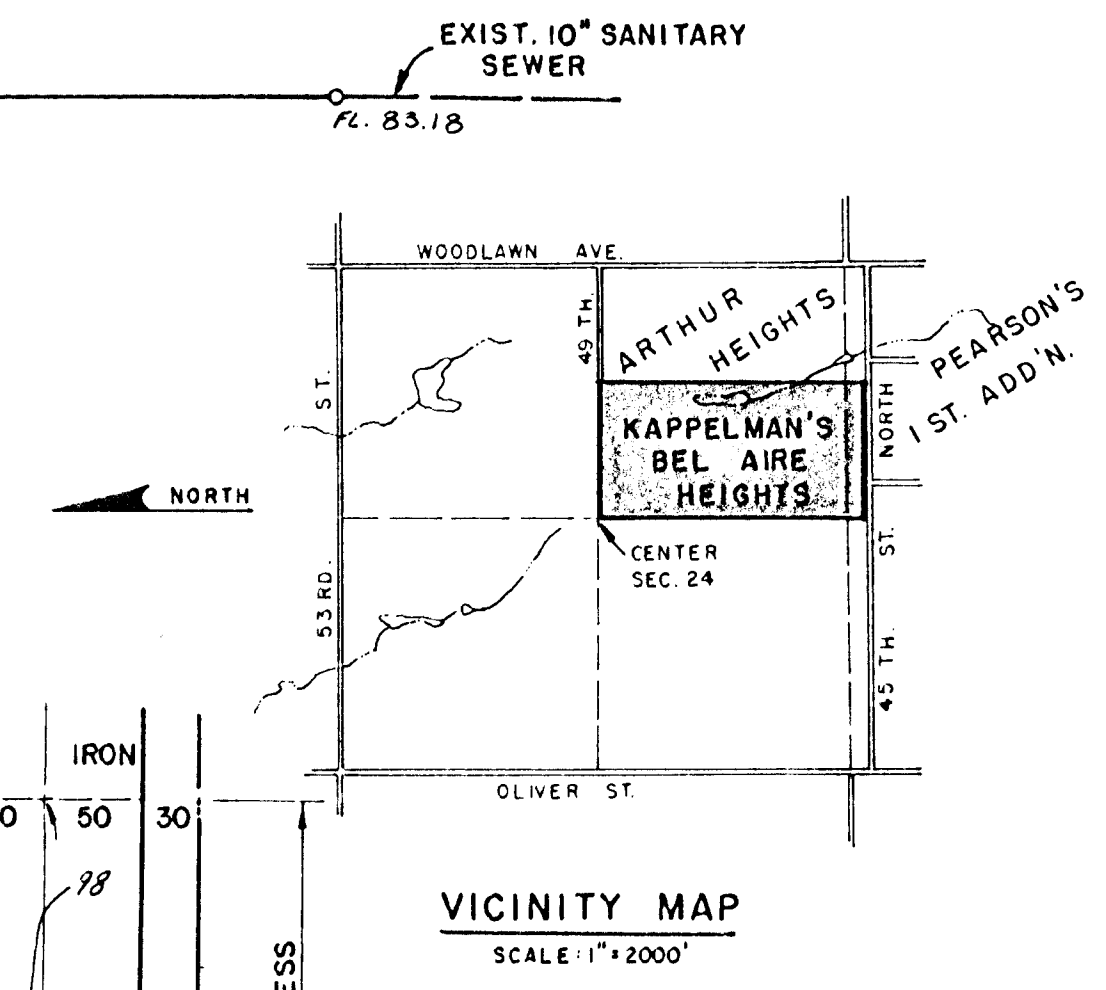


NOTE:
 RESERVE A - OPEN SPACE, FLOODWAY AND UTILITY EASEMENT.
 RESERVE B - FLOODWAY AND UTILITY EASEMENT.
 BOTH RESERVES OWNED AND MAINTAINED BY HOME OWNERS ASSOC.
 MIN. BUILDING PAD ELEV. 121.0 ON LOTS ADJACENT TO POND.

DEVELOPER:
 CHESTER - KAPPELMAN - GAUDREAU, INC.
 144 N. OLIVER
 WICHITA, KANSAS 67208

SCALE: 1" = 100'



NOTES
 ALL EASEMENTS ARE 20' WIDE UTILITY EASEMENTS UNLESS OTHERWISE NOTED.
 ALL BUILDING SETBACK LINES ARE 25' UNLESS OTHERWISE NOTED.
 ALL CUL-DE-SACS ARE 50 FOOT RADIUS SEWER, WATER AND STREETS WILL BE THRU BEL AIRE IMPROVEMENT DISTRICT.

PRELIMINARY PLAT OF
**KAPPELMAN'S
 BEL AIRE HEIGHTS**

AN ADDITION TO
 SEDGWICK COUNTY, KANSAS

FEBRUARY 7, 1980

SITE DATA
 213 SINGLE FAMILY LOTS
 16 DUPLEX LOTS
 10 AC. MULTI-FAMILY AT 15 UNITS/ACRE
 SEE DRAINAGE PLAN FOR PROPOSED SITE GRADING

B.M. 1425.30 SPIKE IN POLE AT SOUTH 1/4 COR.
 1420.91 TOP IRON PIPE CENTER SEC. 24
 ADD 1300 TO CONTOURS FOR U.S.G.S. DATUM.