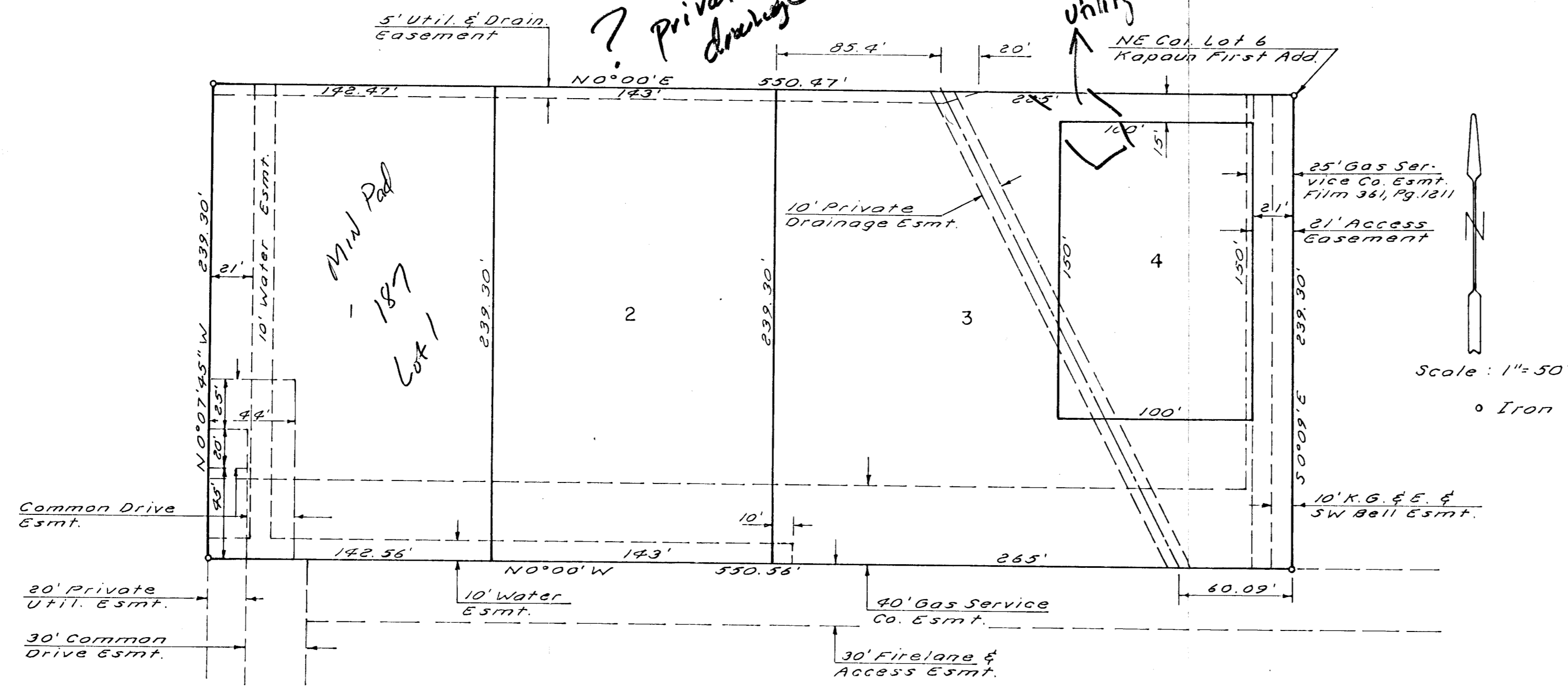


KAPAUN FOURTH ADDITION

WICHITA, KANSAS



This plat of "KAPAUN FOURTH ADDITION", Wichita, Kansas, has been submitted to and approved by the Wichita-Sedgwick County Metropolitan Area Planning Commission, Wichita, Kansas, dated this _____ day of _____, 1982.

Wichita-Sedgwick County Metropolitan Area Planning Commission

James L. Gardner, II _____ Chairman
Robert A. Lakin _____ Secretary

This plat approved and all dedications shown hereon accepted by the Board of City Commissioners, Wichita, Kansas, this _____ day of _____, 1982.

Albert J. Kirk _____ Mayor
Donald C. Bistick _____ City Clerk

This plat approved and all dedications shown hereon accepted by the Board of County Commissioners, Sedgwick County, Kansas, this _____ day of _____, 1982.

Jack Spratt _____ Chairman
Tom Scott _____ Commissioner
Donald G. Gragg _____ Commissioner
Dorothy K. White _____ County Clerk

Entered on transfer record this _____ day of _____, 1982.

Dorothy K. White _____ County Clerk

State of Kansas } S.S. This is to certify that Sedgwick County } this plat has been filed for record in the Office of the Register of Deeds this _____ day of _____, 1982, at _____ o'clock, _____ M., and is duly recorded.

Belle F. McCart _____ Register of Deeds
Pat Kettler _____ Deputy

State of Kansas } S.S. We, Baughman Company, P.A., Sedgwick County } Surveyors in aforesaid county and state, do hereby certify that we have surveyed and platted "KAPAUN FOURTH ADDITION", Wichita, Kansas, and that the accompanying plat is a true and correct exhibit of the property surveyed, described as a replat of that part of Lot 6, Kapaun First Addition, Wichita, Kansas, located in the SE 1/4 of Section 13, T27S, R1E, described as follows: All that part of said Lot 6, lying north of the north line and the north line extended of Lot 5 in said Kapaun Addition, except the west 200 feet thereof.

Date _____ Baughman Company, P.A.
John E. Lundblade _____ Surveyor

We, the Fourth National Bank and Trust Co. of Wichita, holders of a mortgage on the above described property, do hereby consent to this plat of "KAPAUN FOURTH ADDITION".

Fourth National Bank and Trust Co., Wichita

State of Kansas } S.S. The foregoing instrument was acknowledged before me this _____ day of _____, 1982, by the Fourth National Bank and Trust Co., Wichita, by _____

_____, Notary Public
My Commission Expires _____

Know all men by these presents, that we, the undersigned, have caused the land described in the surveyors certificate to be platted into lots to be known as "KAPAUN FOURTH ADDITION", Wichita, Kansas. The easements are hereby granted as indicated for the construction and maintenance of public utilities.

Carl Chuzy _____ Tola C. Chuzy _____

State of Kansas } S.S. The foregoing instrument was acknowledged before me this _____ day of _____, 1982, by Carl Chuzy and Tola C. Chuzy, his wife.

_____, Notary Public
My Commission Expires _____