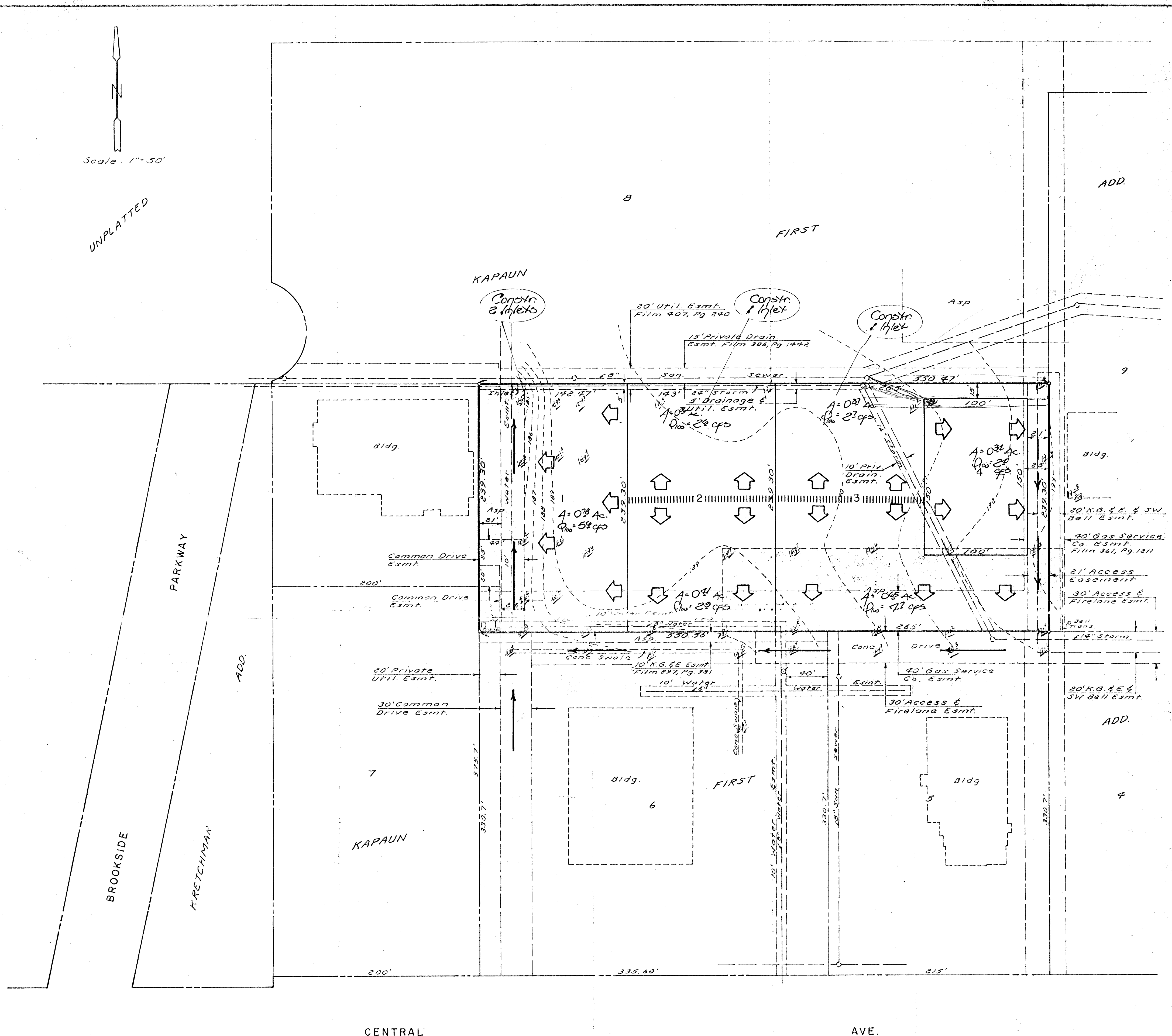


UNPLATTED



Additional topo steps 9-9-82  
SKETCH PLAT

### KAPAUN FOURTH ADDITION

A REPLAT OF PART OF LOT 6, KAPAUN FIRST ADDITION

# —drainage plan—

B.M. City disc 44' W & 56' N @  
Woodlawn & Central  
E1. 192.27

Aug 9, 1982  
**BAUGHMAN COMPANY, P.A.**  
SURVEYING & ENGINEERING  
310/262-7221 • 330 LAURA • WICHITA, KANSAS 67211