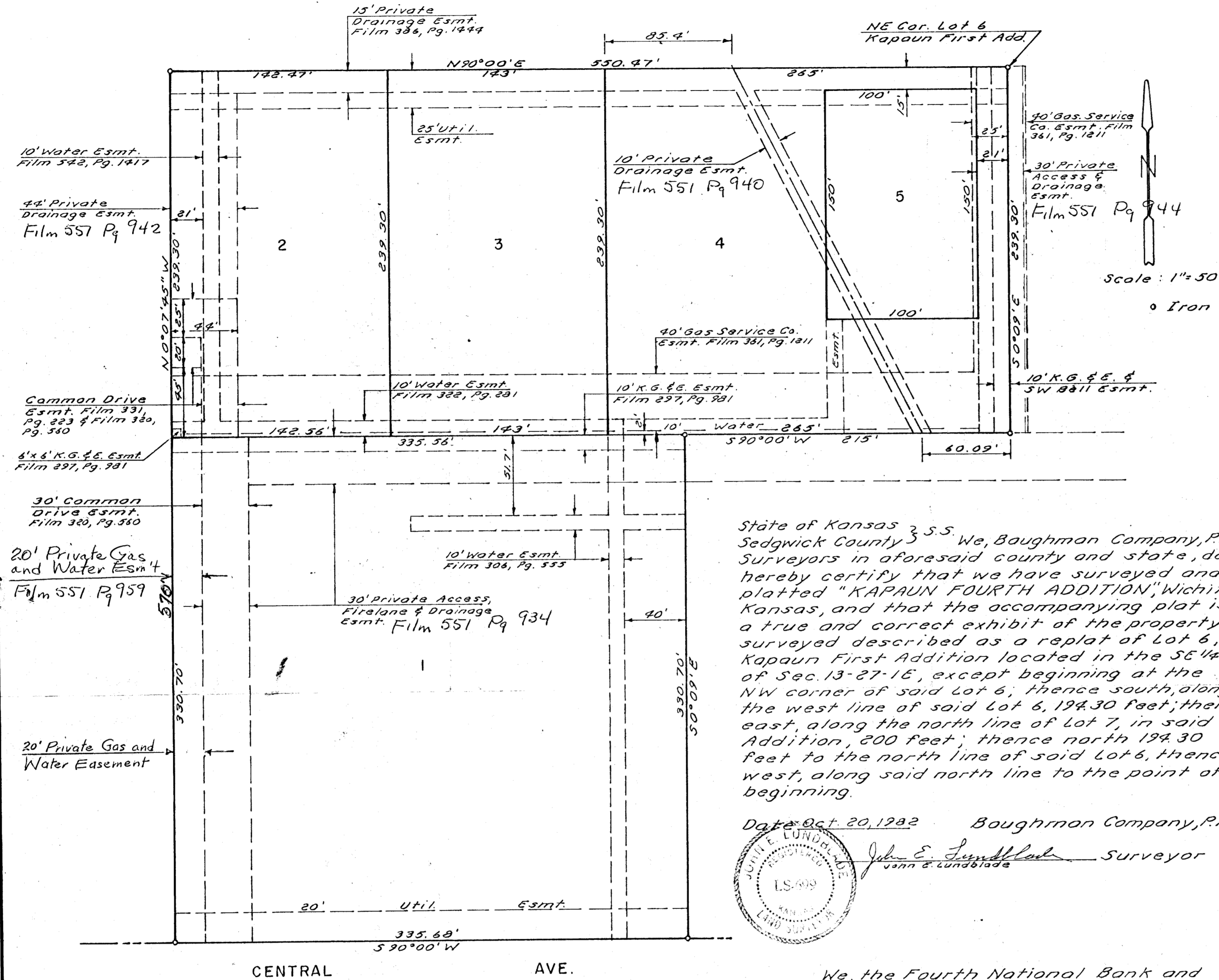


KAPAUN FOURTH ADDITION

WICHITA, KANSAS



This plat of "KAPAUN FOURTH ADDITION" Wichita, Kansas, has been submitted to and approved by the Wichita-Sedgwick County Metropolitan Area Planning Commission, Wichita, Kansas, Dated this _____ day of _____, 1982.

Wichita-Sedgwick County Metropolitan Area Planning Commission

Chairman

Secretary

This plat approved and all dedications shown hereon accepted by the Board of City Commissioners, Wichita, Kansas, this _____ day of _____, 1982.

Mayor

City Clerk

This plat approved and all dedications shown hereon accepted by the Board of County Commissioners, Sedgwick County, Kansas, this _____ day of _____, 1982.

Chairman

Commissioner

Commissioner

County Clerk

Entered on transfer record this _____ day of _____, 1982.

County Clerk

State of Kansas } S.S. We, Baughman Company, P.A.,
Sedgwick County } Surveyors in aforesaid county and state, do
hereby certify that we have surveyed and
platted "KAPAUN FOURTH ADDITION", Wichita,
Kansas, and that the accompanying plat is
a true and correct exhibit of the property
surveyed described as a replat of Lot 6,
Kapaun First Addition located in the SE 1/4
of Sec. 13-27-16, except beginning at the
NW corner of said Lot 6, thence south, along
the west line of said Lot 6, 194.30 feet; thence
east, along the north line of Lot 7, in said
Addition, 200 feet; thence north 194.30
feet to the north line of said Lot 6, thence
west, along said north line to the point of
beginning.

Date Oct 20, 1982 Baughman Company, P.A.

Surveyor

We, the Fourth National Bank and Trust Co., Wichita, Kansas, holder of a mortgage on the above described property, do hereby consent to this plat of "KAPAUN FOURTH ADDITION", Wichita, Kansas.

Fourth National Bank and Trust Co., Wichita

President

State of Kansas } S.S. The foregoing instru-
Sedgwick County } ment was acknowledged before me this
_____ day of _____, 1982, by the Fourth
National Bank and Trust Co., Wichita, by

President

Notary Public
My Commission Expires _____

Know all men by these presents, that we, the undersigned, have caused the land described in the surveyors certificate to be platted into lots to be known as "KAPAUN FOURTH ADDITION", Wichita, Kansas. The easements are hereby granted as indicated for the construction and maintenance of public utilities.

Carl Chuey

Tola C. Chuey

State of Kansas } S.S. The foregoing instrument
Sedgwick County } was acknowledged before me this _____ day of
October _____, 1982, by Carl Chuey and Tola C.
Chuey, his wife.

Notary Public
My Commission Expires _____

