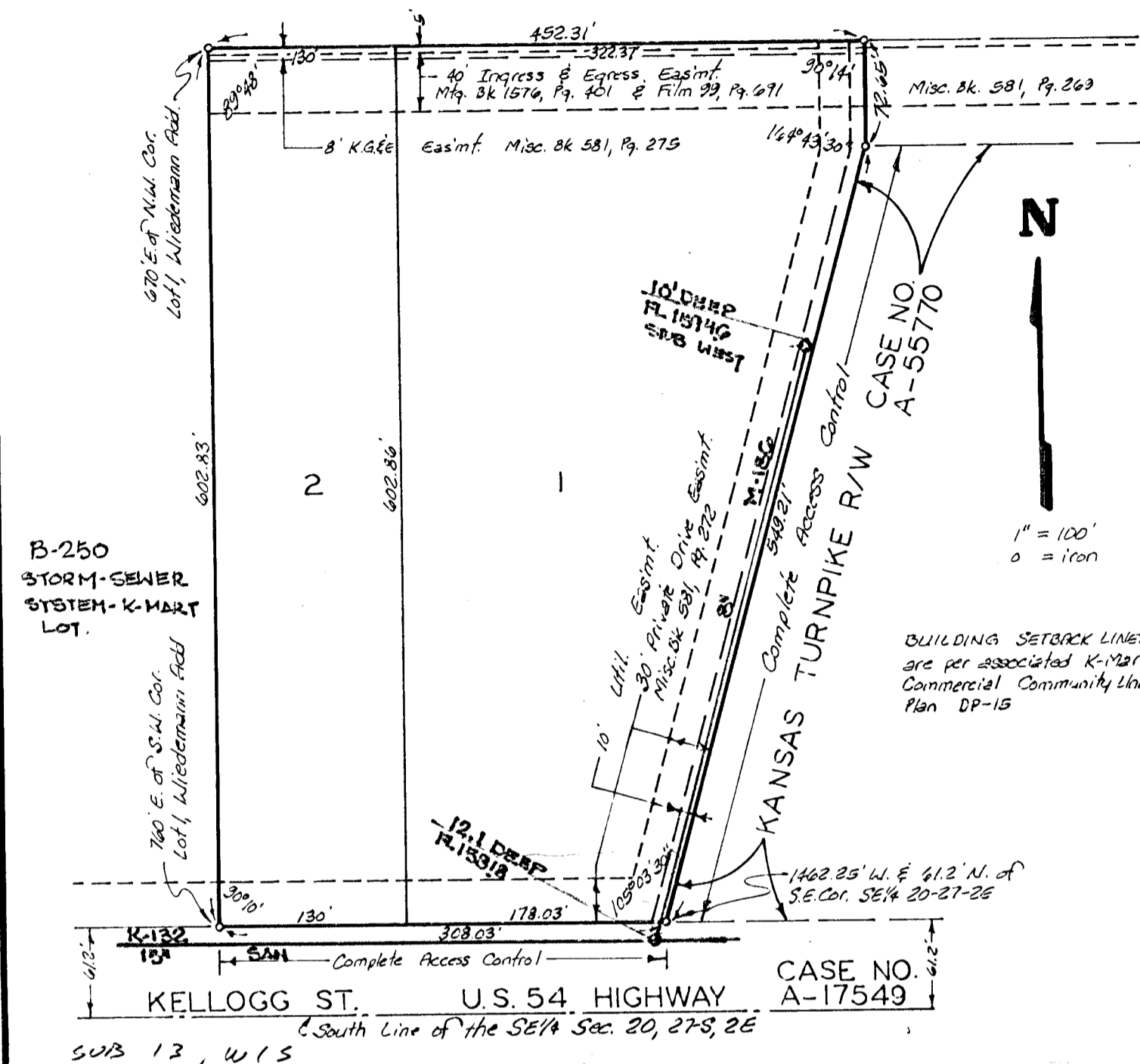


KELWAY 2ND. ADDITION

WICHITA, KANSAS.

K-132
M-186
L 64.



State of Kansas ss. We, Baughman Company, P.A., Surveyors in and said county and state do hereby certify that we have surveyed and platted "KELWAY 2ND. ADDITION", Wichita, Kansas and that the accompanying plat is a true and correct exhibit of the property surveyed described as and being a replat of Lot 1, Wiedemann Addition, Wichita, Sedgwick County, Kansas, except that part described as beginning at the S.W. Corner of said Lot 1, being the intersection of the east line of the drainage dedication and the south line of said Lot 1; thence east, along the south line of said Lot 1, 160 feet; thence north, parallel with the west line of the SE 1/4 of Sec. 20, Twp. 27-S, R-2-E, being the west line of the drainage dedication as shown on said Wiedemann Addition, 602.83 feet to the north line of said Lot 1; thence west, along the north line of said Lot 1, 670 feet to the N.W. Corner of said Lot 1, being the intersection of the east line of the drainage dedication and the north line of said Lot 1; thence south and southwesterly along the line common to Lot 1 and the drainage dedication, to the place of beginning. All being situated in the SE 1/4 of Sec. 20, Twp. 27-S, R-2-E of the 6th P.M., Sedgwick County, Kansas.

Baughman Company, P.A.

Date
William L. Korber
Surveyor

Know all men by these presents that we the undersigned have caused the land described in the surveyors certificate to be platted into lots to be known as "KELWAY 2ND. ADDITION", Wichita, Kansas. Utility easements are hereby granted as indicated for the construction and maintenance of all public utilities. All abutters rights of access to or from Kellogg St. over and across the south line of Lots 1 and 2 and to or from the Kansas Turnpike over and across the east line of Lot 1, are hereby granted to the appropriate governing bodies. Access to Lots 1 and 2 is by means of the existing 10 foot Ingress and Egress easement and the existing 30 foot Private Drive Easement.

Kelway, Inc.

Daniel M. Carney
President

State of Kansas ss. The foregoing instrument was acknowledged before me, this _____ day of _____, 1984, by Daniel M. Carney, President of Kelway, Inc., on behalf of the corporation.

Notary Public

My App't. Exp. _____

State of Kansas ss. This is to certify that this plat has been filed for record in the office of the Register of Deeds, this _____ day of _____, 1984, at _____ o'clock _____ M; and is duly recorded.

Bette F. McCart
Register of Deeds

Pat Kettler
Deputy

This plat of "KELWAY 2ND. ADDITION", Wichita, Kansas, has been submitted to and approved by the Wichita-Sedgwick County Metropolitan Area Planning Commission, Wichita, Kansas.
Dated this _____ day of _____, 1984.
Wichita-Sedgwick County Metropolitan Area Planning Commission.

Robert K. Chisholm
Chairman

Robert A. Lakin
Secretary

This plat approved and all dedications shown hereon accepted by the Board of Commissioners of the City of Wichita, Kansas, this _____ day of _____, 1984.

Marjorie Wright
Mayor

Donald C. Giesick
City Clerk

This plat approved and all dedications shown hereon accepted by the Board of Commissioners of Sedgwick County, Kansas, this _____ day of _____, 1984.

Jack Spratt
Chairman

Donald E. Grepp
Commissioner

Tom Scott
Commissioner

Dorothy K. White
County Clerk

Entered on transfer record this _____ day of _____, 1984.

Dorothy K. White
County Clerk