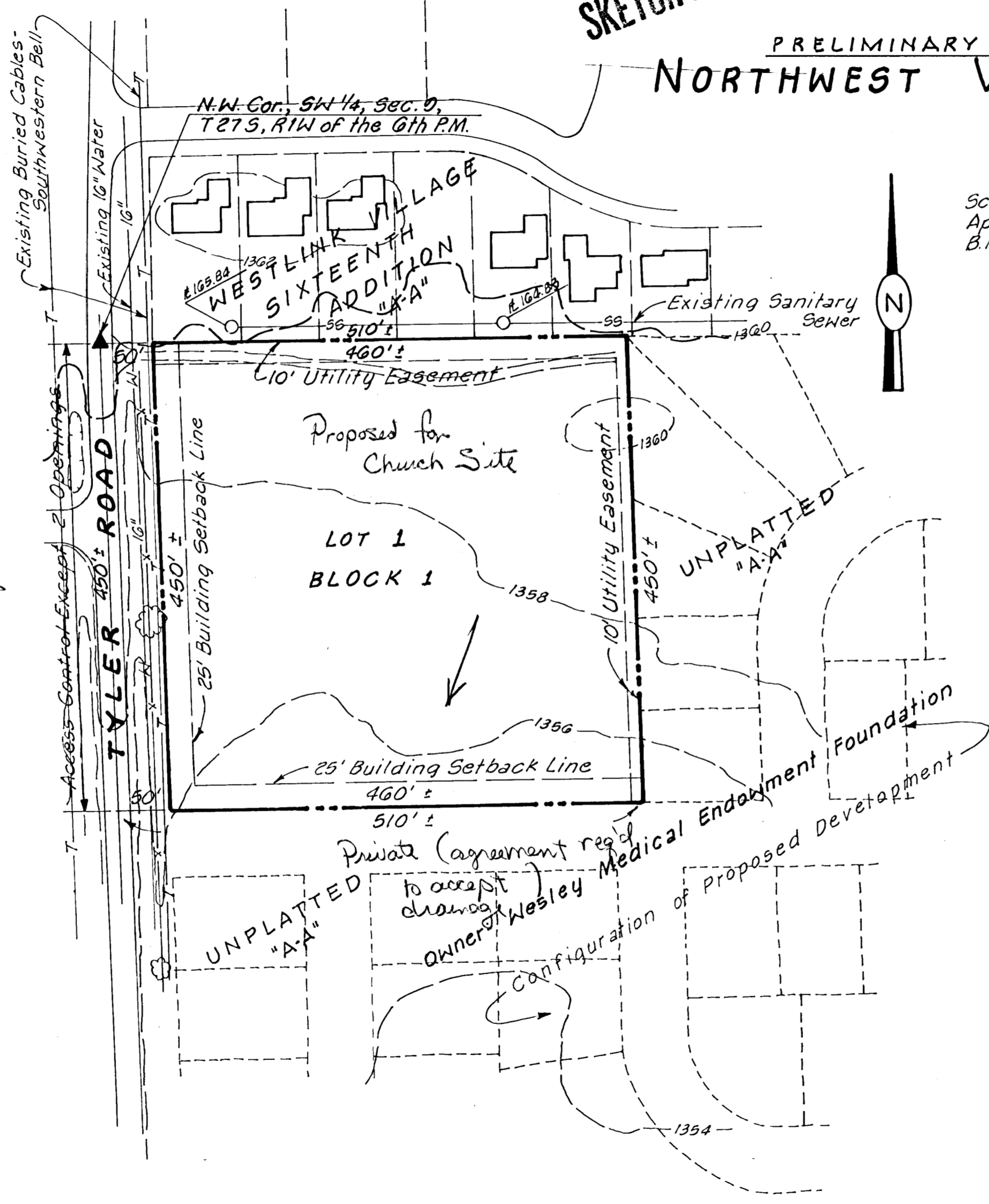


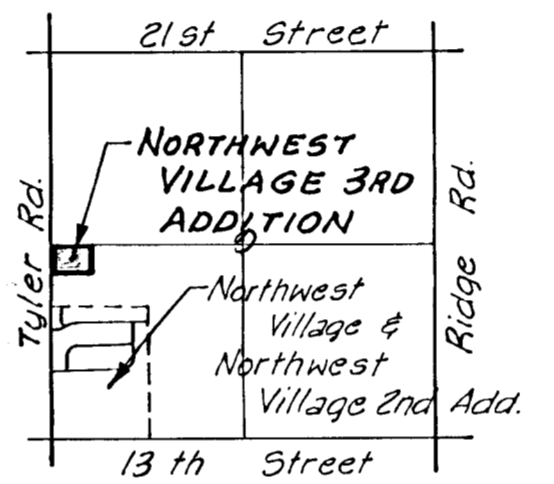
SKETCH PLAT

PRELIMINARY PLAT
NORTHWEST VILLAGE 3RD ADDITION

Help pay for paving Tyler & attempt to secure utilities



Scale: 1" = 100'
 April 9, 1981
 B.M. - City Std. Disc @ Tyler & 17th -
 36'E & 31'S. & Both.
 El. 172.48 (City Datum)
 1359.88 (MSL)



Engineer: Professional Engineering Consultants, P.A.
 1440 E. English
 Wichita, Kansas 67211

Note: All utilities available

Northwest Village
 3rd Addn.

RECEIVED
 APR 24 1981